



Federal Aviation
Administration

Terminal Area Forecast Summary

Fiscal Years 2018-2045



Preface

This publication provides aviation data users with summary historical and forecast statistics on passenger demand and aviation activity at U.S. airports. The summary level forecasts are based on individual airport projections.

The Terminal Area Forecast (TAF) includes forecasts for active airports in the National Plan of Integrated Airport Systems (NPIAS). The Federal Aviation Administration's (FAA) Forecast and Performance Analysis Division, Office of Aviation Policy and Plans, develops the TAF. As its primary input, the TAF initially used the national forecasts of aviation activity contained in FAA Aerospace Forecasts, Fiscal Years 2018-2038. The final TAF considers the forecasts and assumptions contained in FAA Aerospace Forecasts, Fiscal Years 2019-2039. Beginning April 25, 2019 the tables for the national forecasts can be found at:

http://www.faa.gov/data_research/aviation/aerospace_forecasts/

The TAF is available on the Internet. The TAF model and TAF database can be accessed at:

http://www.faa.gov/data_research/aviation/taf

The TAF model allows users to create their own forecast scenarios. It contains a query data application that allows the public to access and print historical (1990 to 2017) and forecast (2018 to 2045) aviation activity data by individual airport, state, or FAA region.

The FAA welcomes public comment on the forecasts, as well as suggestions for improving the usefulness of the TAF.

Roger Schaufele, Jr.
Manager
Forecast and Performance Analysis Division
Office of Aviation Policy and Plans

Acknowledgements

This document was prepared by the Forecast and Performance Analysis Division of the FAA Office of Aviation Policy and Plans under the direction of Roger Schaufele, Manager, and Michael Lukacs, Deputy Division Manager, Forecast and Performance Analysis Division. The forecasts were prepared by Peter LeBoff, Dipasis Bhadra, Li Ding, Chia-Mei Liu, Anna Barlett, and Gary Mihalik.

The software support was provided under contract by Volanno. We extend a special thanks to Alice Dobrin and Damien Agostinelli whose invaluable programming support for the TAF software made accessing and analyzing this airport data so much more efficient.

Special acknowledgments are made to FAA Airports staff in the Regional and Airport District Offices for their assistance in coordinating the regional reviews, state input, and forecast recommendations. The reviews and comments of the regional offices were extremely important and useful in guiding the Forecast and Performance Analysis Division in making adjustments to the preliminary version of the forecasts. Their efforts have enhanced the accuracy and credibility of the final product.

Table of Contents

Preface	i
Acknowledgements	ii
Table of Contents	iii
Forecast Process	1
Introduction.....	1
Forecast Method	2
Forecast Review Process	3
Data Sources	3
TAF and National Forecast Tables	5
<i>Appendix A: Description of Activity Measures</i>	21
Air Carrier Enplanements.....	21
Regional Enplanements.....	21
Aircraft Operations	21
Local Operations	22
Itinerant Operations.....	22
Tracon Operations	22
Overflights	22
Appendix B: List of FAA Towers by Hub Size and FAA Contract Towers	23
Table B-1 List of Large Hub Towers	24
Table B-2 List of Medium Hub Towers.....	25
Table B-3 List of Small Hub Towers	26
Table B-4 List of Non-Hub Towers.....	28
Table B-5 List of FAA Contract Towers	34

Forecast Process

Introduction

The Terminal Area Forecast (TAF) contains historical and forecast data for enplanements, airport operations, tracon operations, and based aircraft. The data cover 264 FAA towered airports, 254 Federal contract tower airports, 30 terminal radar approach control facilities, and 2,805 non FAA airports. Data in the TAF are presented on a U.S. Government fiscal year basis (October through September).

The TAF is available on the Internet. The TAF model and TAF database can be accessed at:

http://www.faa.gov/data_research/aviation/taf

The TAF model allows users to create their own forecast scenarios. The TAF database allows public access to historical and forecast aviation activity data by individual airport, state, or FAA region. In addition, links to the TAF from previous years are available via the address noted above.

The TAF is prepared to assist the FAA in meeting its planning, budgeting, and staffing requirements. In addition, state aviation authorities and other aviation planners use the TAF as a basis for planning airport improvements.

This document presents a set of summary tables on airport activity statistics. The airport activity data contained in the TAF consist of the following:

- **enplanements** (sum of originating and connecting passengers) for air carriers and regionals;
- **itinerant operations** for air carriers, commuters and air taxis, general aviation (GA), and military aircraft;
- **local operations** for civil and military aircraft; and
- **tracon operations** for aircraft operations under radar control.

Data on operations presented in the TAF show historical information from 1990 through 2017 and forecasts for 2018 to 2045.¹ The historical enplanement information in the TAF is from 1976 through 2017 and the 2018 figures represent estimates. The enplanement forecasts are from 2019 to 2045. Appendix A provides a detailed

¹ Operations data for FAA towers and Federal contract towers for 2018 are actual.

description of the activity data elements in the TAF. Appendix B provides a list of FAA airports by hub size and a list of FAA contract towers.

Forecast Method

The TAF assumes a demand driven forecast for aviation services based upon local and national economic conditions as well as conditions within the aviation industry. In other words, an airport's forecast is developed independent of the ability of the airport and the air traffic control system to furnish the capacity required to meet demand. However, if the airport historically functions under constrained conditions, the FAA forecast may reflect those constraints since they are embedded in historical data. In statistical terms, the relationships between economic growth data and data representing growth in aviation activity reflect those constraints.

The forecasts of passenger enplanements and commercial operations at airports with more than 100,000 enplanements in FY 2017 are based on a bottoms-up approach. The domestic enplanements are forecast by generating origin and destination (O&D) market demand forecasts using the DB1B (quarterly 10% sample) data to model passenger flow on a quarterly basis. The O&D passenger demand forecasts are based on regression analysis using fares, regional demographics, and regional economic factors as the independent variables. The O&D forecasts are then combined with DOT T-100 segment data to generate passenger forecasts by airport pair and segment pair. The segment pair passenger forecasts are assigned to aircraft equipment in order to produce segment pair operation forecasts. The quarterly segment pair forecasts are aggregated to produce annual airport forecasts.

Separate models are used to forecast international passenger enplanements and operations and cargo operations. The international passenger enplanements are forecast on a quarterly basis using time series analysis and T-100 segment data. The segment pair passenger enplanement forecasts are used to generate segment pair operation forecasts. The cargo operation forecasts are also generated on a quarterly basis using time series analysis and T-100 segment data. The segment pair forecasts for international passenger enplanements and operations and cargo operations are aggregated to the market pair and airport level on an annual basis.

The short run (2 year) forecasts of passenger enplanements and operations for airports with more than 100,000 enplanements in FY 2017 incorporate the use of future airline schedules.

The forecasts of passenger enplanements at FAA facilities with fewer than 100,000 enplanements in FY 2017 are based on analysis of historic trends. The commercial operations forecasts are based on the enplanement forecasts, trend analysis, and

enplanements per operation. In addition the commercial forecasts for these airports may be prorated in comparison to national forecast trends by category.

Forecasts of itinerant general aviation operations and local civil operations at FAA facilities are based primarily on time series analysis. Because military operations forecasts have national security implications, the Department of Defense (DOD) provides only limited information on future aviation activity. Hence, the TAF projects military activity at its present level except when FAA has specific knowledge of a change. For instance, DOD may announce a base closing or may shift an Air Force wing from one base to another.

For non-FAA facilities, historic operations in the TAF are from the Form 5010 data. These operations levels are held constant for the forecast unless otherwise specified by a local or regional FAA official.

Forecast Review Process

Initially, FAA headquarters staff and management review forecasts for airports with more than 100,000 enplanements in FY 2017 and FAA facilities with fewer than 100,000 enplanements in FY 2017. These preliminary estimates are then submitted to FAA regional and district offices for review. Suggested changes made by the FAA regional staff are reviewed and, if determined reasonable by APO staff economists, are incorporated into the TAF. Significant increases in commercial activity forecasts are normally incorporated into the TAF only where APO receives verifiable evidence of a firm commitment by an air carrier or regional airline to initiate new service.

Summary statistics presented in the TAF differ from the national totals contained in FAA Aerospace Forecasts, Fiscal Years 2019-2039. Reasons for the differences are threefold. First, the TAF forecast methods consider airport and market specific trends. Second, the TAF and national forecast measurements vary. For example, the TAF includes facilities not serviced by the FAA in its totals. These facilities make up a large share of total general aviation operations. In addition, the TAF includes enplanements at U.S. airports only, whereas the national forecast includes enplanements on U.S. airlines at both U.S. and foreign airports. Finally, individual forecasts are not scaled to force aggregates to equal national totals.

Data Sources

The development of the TAF begins with an update of the latest historical enplanement, operation, and based aircraft statistics, using information derived from several sources. FAA's National Flight Data Center provides general airport information such as the airport name, location, and location identifier. Airport operations and tracon (radar assisted) operations data for airports with FAA and Federal contract air traffic control

services are reported by FAA air traffic and Federal contract tower staff. Operations at non FAA airports are taken from FAA Form 5010 reports on aviation activity at the airport as estimated by FAA inspectors or information provided by airport managers, state aviation activity surveys, and other sources.

U.S. domestic and international (U.S. and foreign flag carriers) enplanements are derived from the Department of Transportation's (DOT's) T-100 database. Regional carrier enplanements are derived from DOT T-100 and 298-C data.²

The origin and destination (O&D) data are based on the Airline Origin and Destination Survey (DB1B). This is a 10 percent sample of airline tickets from carriers reporting to the Office of Airline Information at the Bureau of Transportation Statistics.

Based aircraft data are collected by FAA inspectors, airport managers, and state aviation officials and reported on FAA Form 5010. These data show numbers of aircraft, mostly general aviation aircraft, permanently based at an airport.

² In October 2002, DOT began collecting data for all airlines using the T-100 format. This change provides more detail on regional airlines, who previously reported on Form 298-C.

TAF and National Forecast Tables

Table S-1 Enplanements at Large Hub Airports (in thousands)

Loc ID	Region	Airport Name						Rate** 2017- 2045	Airport ranking	
			2017	2017 Percent*	2018	2022	2045		2017	2045
ATL	ASO	HARTSFIELD - JACKSON ATLANTA INTL	50,422	5.96	51,358	56,460	84,069	1.84	1	1
LAX	AWP	LOS ANGELES INTL	40,908	4.83	42,388	46,612	73,212	2.10	2	2
ORD	AGL	CHICAGO O'HARE INTL	38,169	4.51	39,775	44,814	67,017	2.03	3	3
DFW	ASW	DALLAS-FORT WORTH INTL	31,433	3.71	32,890	36,837	54,537	1.99	4	5
DEN	ANM	DENVER INTL	29,574	3.49	30,850	35,133	51,487	2.00	5	6
JFK	AEA	JOHN F KENNEDY INTL	29,504	3.49	29,890	33,970	56,168	2.33	6	4
SFO	AWP	SAN FRANCISCO INTL	26,483	3.13	27,895	30,360	49,563	2.26	7	7
LAS	AWP	MC CARRAN INTL	23,106	2.73	23,633	25,813	39,273	1.91	8	11
SEA	ANM	SEATTLE-TACOMA INTL	22,450	2.65	23,700	27,367	44,944	2.51	9	8
CLT	ASO	CHARLOTTE/DOUGLAS INTL	21,694	2.56	22,316	24,645	37,632	1.99	10	12
EWR	AEA	NEWARK LIBERTY INTL	21,205	2.50	22,564	25,908	44,936	2.72	11	9
PHX	AWP	PHOENIX SKY HARBOR INTL	21,116	2.49	21,488	23,488	34,639	1.78	12	17
MCO	ASO	ORLANDO INTL	20,996	2.48	22,407	26,027	40,312	2.36	13	10
MIA	ASO	MIAMI INTL	20,490	2.42	20,733	22,645	36,367	2.07	14	13
IAH	ASW	GEORGE BUSH INTERCONTINENTAL/HOUSTON	19,557	2.31	20,694	23,544	36,183	2.22	15	14
BOS	ANE	GENERAL EDWARD LAWRENCE LOGAN INTL	18,508	2.19	19,649	22,432	35,563	2.36	16	15
MSP	AGL	MINNEAPOLIS-ST PAUL INTL/WOLD- CHAMBERLAIN	18,336	2.17	18,414	19,603	28,513	1.59	17	18
DTW	AGL	DETROIT METROPOLITAN WAYNE COUNTY	16,964	2.00	17,346	18,545	25,188	1.42	18	19
FLL	ASO	FORT LAUDERDALE/HOLLYWOOD INTL	15,331	1.81	16,843	19,983	35,416	3.04	19	16
LGA	AEA	LAGUARDIA	14,439	1.71	15,050	17,080	19,938	1.16	20	23
PHL	AEA	PHILADELPHIA INTL	14,162	1.67	15,125	17,152	23,831	1.88	21	20
BWI	AEA	BALTIMORE/WASHINGTON INTL THURGOOD MARSHALL	12,761	1.51	13,343	14,023	19,857	1.59	22	24
SLC	ANM	SALT LAKE CITY INTL	11,527	1.36	12,068	13,462	20,480	2.07	23	22
DCA	AEA	RONALD REAGAN WASHINGTON NATIONAL	11,477	1.36	11,458	13,190	17,373	1.49	24	28
IAD	AEA	WASHINGTON DULLES INTL	10,947	1.29	11,414	12,893	19,792	2.14	25	25
MDW	AGL	CHICAGO MIDWAY INTL	10,901	1.29	10,774	11,331	17,247	1.65	26	29
SAN	AWP	SAN DIEGO INTL	10,889	1.29	12,001	13,859	22,206	2.58	27	21
HNL	AWP	DANIEL K INOUE INTL	9,703	1.15	9,565	9,956	13,383	1.16	28	30
PDX	ANM	PORTLAND INTL	9,399	1.11	9,715	10,901	17,446	2.23	29	27
TPA	ASO	TAMPA INTL	9,354	1.10	10,184	11,753	18,785	2.52	30	26
Total			611,804	72.27	635,531	709,787	1,085,356	2.07		

*Percent of total US enplanements.

**Annual compound growth rate.

Graph S-1 Enplanements Growth Rates for the Large Hub

Airports Fiscal Years 2017 to 2045

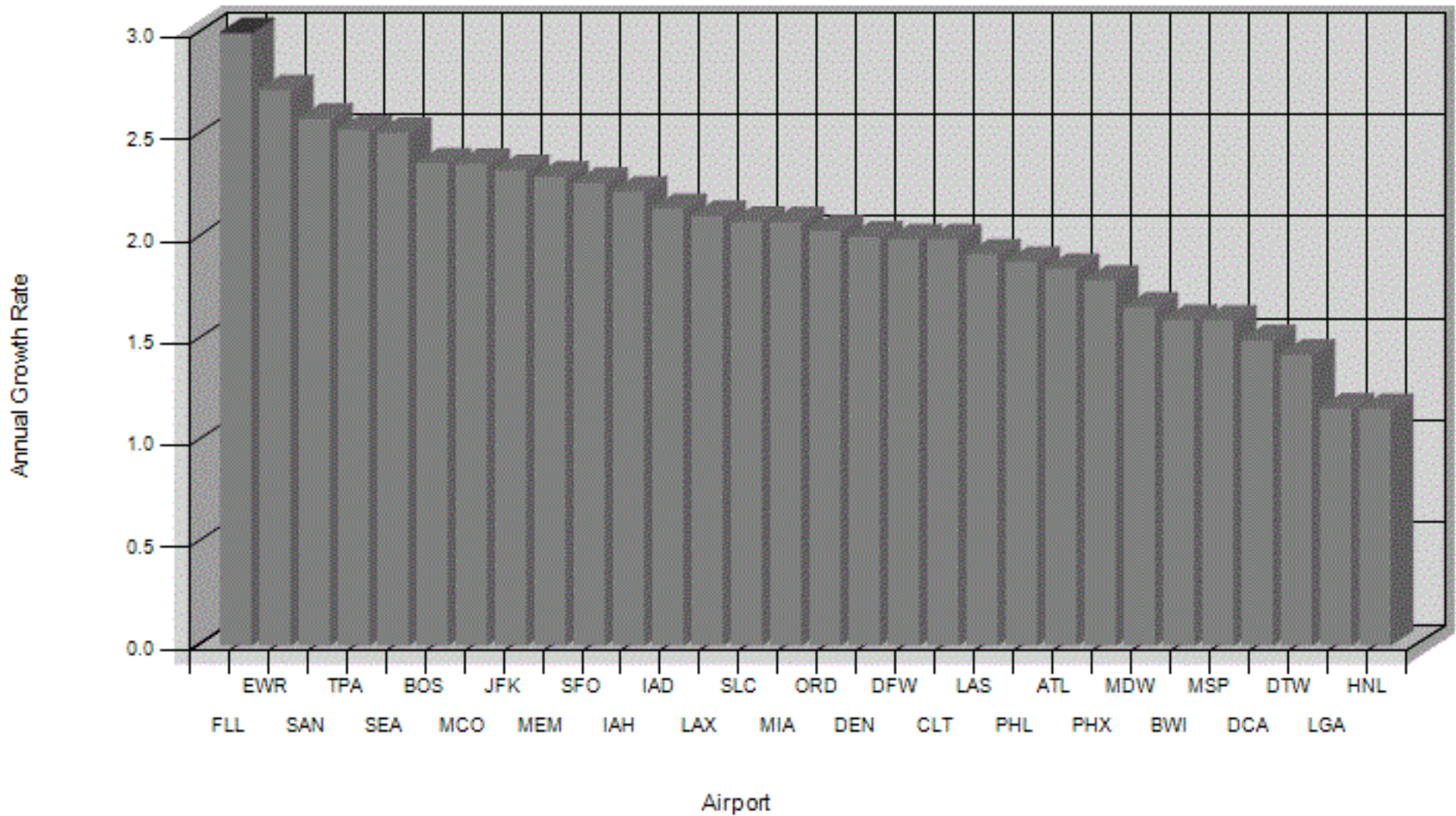


Table S-2 Airport Operations at Large Hub Airports (in thousands)

Loc ID	Region	Airport Name	2017	2017		2018	2022	2045	Rate**		Airport ranking	
				Percent*					2017-	2045	2017	2045
ATL	ASO	HARTSFIELD - JACKSON ATLANTA INTL	885	0.91	890	935	1,357	1.54		1	1	
ORD	AGL	CHICAGO O'HARE INTL	859	0.88	893	873	1,187	1.16		2	2	
LAX	AWP	LOS ANGELES INTL	703	0.72	707	753	1,152	1.78		3	3	
DFW	ASW	DALLAS-FORT WORTH INTL	656	0.67	664	705	997	1.51		4	4	
DEN	ANM	DENVER INTL	584	0.60	595	621	860	1.39		5	6	
CLT	ASO	CHARLOTTE/DOUGLAS INTL	552	0.57	548	596	876	1.66		6	5	
LAS	AWP	MC CARRAN INTL	544	0.56	537	580	825	1.50		7	7	
JFK	AEA	JOHN F KENNEDY INTL	454	0.47	456	497	775	1.93		8	9	
SFO	AWP	SAN FRANCISCO INTL	453	0.47	473	493	762	1.87		9	10	
IAH	ASW	GEORGE BUSH INTERCONTINENTAL/HOUSTON	452	0.46	463	474	674	1.43		10	13	
EWR	AEA	NEWARK LIBERTY INTL	441	0.45	451	474	754	1.93		11	11	
PHX	AWP	PHOENIX SKY HARBOR INTL	432	0.44	431	462	665	1.55		12	14	
MSP	AGL	MINNEAPOLIS-ST PAUL INTL/WOLD-CHAMBERLAIN	415	0.43	410	413	571	1.14		13	18	
SEA	ANM	SEATTLE-TACOMA INTL	414	0.43	434	498	800	2.38		14	8	
MIA	ASO	MIAMI INTL	409	0.42	418	433	644	1.64		15	15	
BOS	ANE	GENERAL EDWARD LAWRENCE LOGAN INTL	401	0.41	423	468	706	2.04		16	12	
DTW	AGL	DETROIT METROPOLITAN WAYNE COUNTY	394	0.40	395	401	530	1.07		17	20	
PHL	AEA	PHILADELPHIA INTL	372	0.38	375	400	531	1.28		18	19	
LGA	AEA	LAGUARDIA	366	0.38	368	371	394	0.27		19	24	
MCO	ASO	ORLANDO INTL	332	0.34	349	390	586	2.04		20	17	
SLC	ANM	SALT LAKE CITY INTL	325	0.33	335	364	511	1.63		21	21	
HNL	AWP	DANIEL K INOUE INTL	312	0.32	311	322	412	0.99		22	23	
FLL	ASO	FORT LAUDERDALE/HOLLYWOOD INTL	306	0.31	330	371	611	2.50		23	16	
DCA	AEA	RONALD REAGAN WASHINGTON NATIONAL	298	0.31	298	307	308	0.12		24	30	
IAD	AEA	WASHINGTON DULLES INTL	294	0.30	301	311	424	1.32		25	22	
BWI	AEA	BALTIMORE/WASHINGTON INTL THURGOOD MARSHALL	258	0.26	268	271	369	1.29		26	27	
MDW	AGL	CHICAGO MIDWAY INTL	252	0.26	245	253	357	1.25		27	28	
PDX	ANM	PORTLAND INTL	229	0.23	232	258	393	1.95		28	25	
SAN	AWP	SAN DIEGO INTL	205	0.21	222	251	391	2.33		29	26	
TPA	ASO	TAMPA INTL	193	0.20	204	223	335	2.00		30	29	
Total			12,789	13.14	13,025	13,769	19,757	1.57				

*Percent of total US operations.

**Annual compound growth rate.

Graph S-2 Airport Operations Growth Rates for the Large Hub

Airports Fiscal Years 2017 to 2045

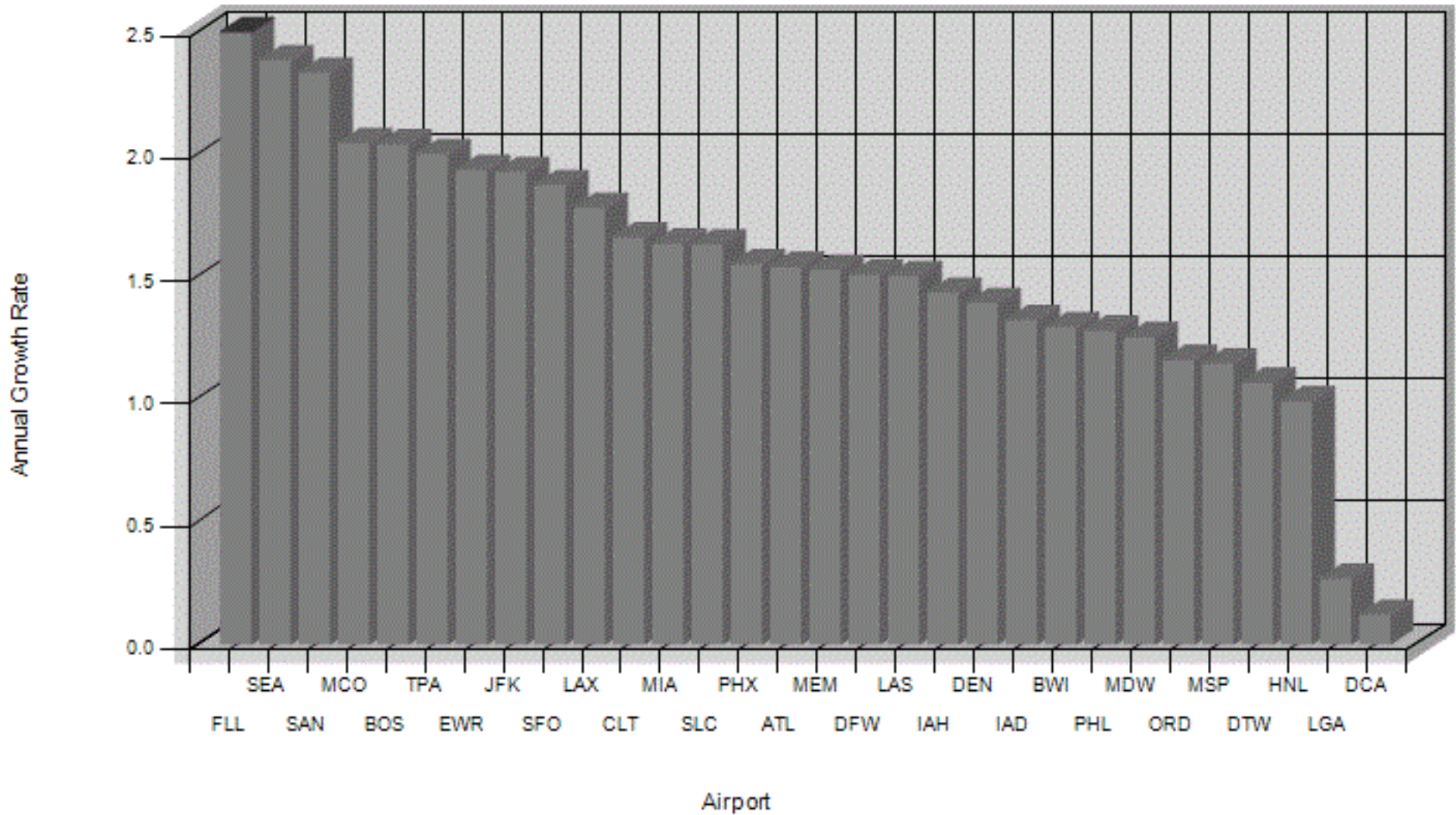


Table S-3 Air Traffic Control Towers and Contract Towers by Region and State

Region/State	FAA Towers	Contract Towers	Region/State	FAA Towers	Contract Towers
Alaskan Region			Northwest Mountain Region		
Alaska	4	4	Colorado	6	3
Regional Total	4	4	Idaho	2	4
Central Region			Montana	3	3
Iowa	4	1	Oregon	3	8
Kansas	1	8	Utah	1	2
Missouri	5	5	Washington	6	7
Nebraska	2	1	Wyoming	1	2
Regional Total	12	15	Regional Total	22	29
Eastern Region			Southern Region		
Delaware	1	0	Alabama	4	3
District of Columbia	3	0	Florida	18	26
Maryland	2	5	Georgia	5	6
New Jersey	5	1	Kentucky	4	2
New York	12	5	Mississippi	2	7
Pennsylvania	9	5	North Carolina	6	5
Virginia	4	2	Puerto Rico	1	2
West Virginia	3	4	South Carolina	5	4
Regional Total	39	22	Tennessee	5	3
Great Lakes Region			Virgin Islands	1	1
Illinois	11	6	Regional Total	51	59
Indiana	6	4	Southwestern Region		
Michigan	11	4	Arkansas	2	5
Minnesota	6	2	Louisiana	7	5
North Dakota	3	1	New Mexico	2	4
Ohio	7	5	Oklahoma	3	6
South Dakota	1	1	Texas	19	23
Wisconsin	3	9	Regional Total	33	43
Regional Total	48	32	Western Pacific Region		
New England Region			Northern Mariana Is	0	1
Connecticut	1	6	Arizona	7	7
Maine	2	0	California	33	20
Massachusetts	3	8	Guam	0	1
New Hampshire	1	2	Hawaii	3	4
Rhode Island	1	0	Nevada	3	1
Vermont	1	0	Regional Total	46	34
Regional Total	9	16	Grand Total	264	254

Table S-4 Ranking of Top 100 FAA Towers by Total Enplanements, FY 2017

Rank	City	State	Location Identifier	Enplaned Passengers*	Percent of Total**	Cumulative Enplanements	Cumulative Percentage	Commercial Operations***	Cumulative Operations
1	ATLANTA	GA	ATL	50,422,497	5.96	50,422,497	5.96	876,805	876,805
2	LOS ANGELES	CA	LAX	40,908,017	4.83	91,330,514	10.79	681,578	1,558,383
3	CHICAGO	IL	ORD	38,169,220	4.51	129,499,734	15.30	853,212	2,411,595
4	DALLAS-FORT WORTH	TX	DFW	31,433,095	3.71	160,932,829	19.01	648,633	3,060,228
5	DENVER	CO	DEN	29,574,274	3.49	190,507,103	22.50	580,005	3,640,233
6	NEW YORK	NY	JFK	29,503,646	3.49	220,010,749	25.99	445,572	4,085,805
7	SAN FRANCISCO	CA	SFO	26,482,943	3.13	246,493,692	29.12	439,034	4,524,839
8	LAS VEGAS	NV	LAS	23,105,936	2.73	269,599,628	31.85	499,731	5,024,570
9	SEATTLE	WA	SEA	22,449,550	2.65	292,049,178	34.50	411,745	5,436,315
10	CHARLOTTE	NC	CLT	21,694,448	2.56	313,743,626	37.06	525,211	5,961,526
11	NEWARK	NJ	EWR	21,205,074	2.50	334,948,700	39.57	428,671	6,390,197
12	PHOENIX	AZ	PHX	21,115,898	2.49	356,064,598	42.06	409,723	6,799,920
13	ORLANDO	FL	MCO	20,995,892	2.48	377,060,490	44.54	315,769	7,115,689
14	MIAMI	FL	MIA	20,489,627	2.42	397,550,117	46.96	390,010	7,505,699
15	HOUSTON	TX	IAH	19,556,778	2.31	417,106,895	49.27	439,932	7,945,631
16	BOSTON	MA	BOS	18,508,462	2.19	435,615,357	51.46	385,436	8,331,067
17	MINNEAPOLIS	MN	MSP	18,335,669	2.17	453,951,026	53.62	401,611	8,732,678
18	DETROIT	MI	DTW	16,963,574	2.00	470,914,600	55.63	387,494	9,120,172
19	FORT LAUDERDALE	FL	FLL	15,331,180	1.81	486,245,780	57.44	267,462	9,387,634
20	NEW YORK	NY	LGA	14,438,785	1.71	500,684,565	59.14	360,495	9,748,129
21	PHILADELPHIA	PA	PHL	14,162,378	1.67	514,846,943	60.82	357,491	10,105,620
22	BALTIMORE	MD	BWI	12,760,993	1.51	527,607,936	62.32	242,946	10,348,566
23	SALT LAKE CITY	UT	SLC	11,526,523	1.36	539,134,459	63.69	277,269	10,625,835
24	WASHINGTON	DC	DCA	11,476,739	1.36	550,611,198	65.04	291,026	10,916,861
25	WASHINGTON	DC	IAD	10,947,391	1.29	561,558,589	66.33	255,136	11,171,997
26	CHICAGO	IL	MDW	10,901,387	1.29	572,459,976	67.62	214,147	11,386,144
27	SAN DIEGO	CA	SAN	10,888,518	1.29	583,348,494	68.91	194,738	11,580,882
28	HONOLULU	HI	HNL	9,702,565	1.15	593,051,059	70.05	258,154	11,839,036
29	PORTLAND	OR	PDX	9,399,186	1.11	602,450,245	71.16	208,699	12,047,735
30	TAMPA	FL	TPA	9,353,895	1.10	611,804,140	72.27	168,557	12,216,292
31	DALLAS	TX	DAL	7,537,325	0.89	619,341,465	73.16	165,604	12,381,896
32	ST LOUIS	MO	STL	7,104,362	0.84	626,445,827	74.00	185,077	12,566,973
33	NASHVILLE	TN	BNA	6,748,782	0.80	633,194,609	74.80	164,285	12,731,258
34	AUSTIN	TX	AUS	6,580,031	0.78	639,774,640	75.57	135,423	12,866,681
35	HOUSTON	TX	HOU	6,392,225	0.76	646,166,865	76.33	142,881	13,009,562
36	OAKLAND	CA	OAK	6,321,073	0.75	652,487,938	77.08	152,841	13,162,403
37	SAN JOSE	CA	SJC	5,899,617	0.70	658,387,555	77.77	138,650	13,301,053
38	NEW ORLEANS	LA	MSY	5,879,459	0.69	664,267,014	78.47	120,253	13,421,306
39	RALEIGH/DURHAM	NC	RDU	5,597,296	0.66	669,864,310	79.13	145,061	13,566,367
40	KANSAS CITY	MO	MCI	5,574,710	0.66	675,439,020	79.79	119,700	13,686,067

Table S-4 Ranking of Top 100 FAA Towers by Total Enplanements, FY 2017

Rank	City	State	Location Identifier	Enplaned Passengers*	Percent of Total**	Cumulative Enplanements	Cumulative Percentage	Commercial Operations***	Cumulative Operations
41	SACRAMENTO	CA	SMF	5,192,329	0.61	680,631,349	80.40	106,201	13,792,268
42	SANTA ANA	CA	SNA	5,078,064	0.60	685,709,413	81.00	107,257	13,899,525
43	CLEVELAND	OH	CLE	4,333,368	0.51	690,042,781	81.51	112,132	14,011,657
44	SAN JUAN	PR	SJU	4,325,699	0.51	694,368,480	82.02	129,687	14,141,344
45	FORT MYERS	FL	RSW	4,309,039	0.51	698,677,519	82.53	72,973	14,214,317
46	SAN ANTONIO	TX	SAT	4,300,499	0.51	702,978,018	83.04	109,064	14,323,381
47	INDIANAPOLIS	IN	IND	4,276,104	0.51	707,254,122	83.54	144,462	14,467,843
48	PITTSBURGH	PA	PIT	4,209,340	0.50	711,463,462	84.04	131,286	14,599,129
49	COVINGTON	KY	CVG	3,653,411	0.43	715,116,873	84.47	139,475	14,738,604
50	COLUMBUS	OH	CMH	3,639,539	0.43	718,756,412	84.90	108,340	14,846,944
51	KAHULUI	HI	OGG	3,429,754	0.41	722,186,166	85.31	125,268	14,972,212
52	MILWAUKEE	WI	MKE	3,393,306	0.40	725,579,472	85.71	96,653	15,068,865
53	WINDSOR LOCKS	CT	BDL	3,123,727	0.37	728,703,199	86.08	78,307	15,147,172
54	WEST PALM BEACH	FL	PBI	3,076,484	0.36	731,779,683	86.44	84,815	15,231,987
55	JACKSONVILLE	FL	JAX	2,675,337	0.32	734,455,020	86.76	69,876	15,301,863
56	ANCHORAGE	AK	ANC	2,536,678	0.30	736,991,698	87.06	189,696	15,491,559
57	ALBUQUERQUE	NM	ABQ	2,365,624	0.28	739,357,322	87.34	73,914	15,565,473
58	BUFFALO	NY	BUF	2,326,711	0.27	741,684,033	87.61	68,377	15,633,850
59	BURBANK	CA	BUR	2,304,625	0.27	743,988,658	87.88	68,806	15,702,656
60	OMAHA	NE	OMA	2,207,834	0.26	746,196,492	88.14	69,743	15,772,399
61	ONTARIO	CA	ONT	2,198,009	0.26	748,394,501	88.40	76,509	15,848,908
62	MEMPHIS	TN	MEM	2,069,192	0.24	750,463,693	88.65	199,165	16,048,073
63	RENO	NV	RNO	1,907,620	0.23	752,371,313	88.87	54,879	16,102,952
64	CHARLESTON	SC	CHS	1,884,471	0.22	754,255,784	89.10	59,344	16,162,296
65	PROVIDENCE	RI	PVD	1,848,703	0.22	756,104,487	89.32	44,096	16,206,392
66	OKLAHOMA CITY	OK	OKC	1,840,936	0.22	757,945,423	89.53	56,853	16,263,245
67	RICHMOND	VA	RIC	1,799,021	0.21	759,744,444	89.75	62,192	16,325,437
68	LONG BEACH	CA	LGB	1,744,853	0.21	761,489,297	89.95	41,102	16,366,539
69	BOISE	ID	BOI	1,735,998	0.21	763,225,295	90.16	55,564	16,422,103
70	KAILUA/KONA	HI	KOA	1,727,499	0.20	764,952,794	90.36	55,000	16,477,103
71	SPOKANE	WA	GEG	1,660,344	0.20	766,613,138	90.56	48,232	16,525,335
72	TUCSON	AZ	TUS	1,658,976	0.20	768,272,114	90.75	49,392	16,574,727
73	LOUISVILLE	KY	SDF	1,654,604	0.20	769,926,718	90.95	147,406	16,722,133
74	NORFOLK	VA	ORF	1,652,323	0.20	771,579,041	91.14	53,716	16,775,849
75	LIHUE	HI	LIH	1,497,453	0.18	773,076,494	91.32	105,714	16,881,563
76	EL PASO	TX	ELP	1,442,605	0.17	774,519,099	91.49	49,629	16,931,192
77	GUAM	GU	GUM	1,396,418	0.16	775,915,517	91.66	26,743	16,957,935
78	ALBANY	NY	ALB	1,390,299	0.16	777,305,816	91.82	47,330	17,005,265
79	GRAND RAPIDS	MI	GRR	1,388,546	0.16	778,694,362	91.98	42,049	17,047,314
80	ORLANDO	FL	SFB	1,379,787	0.16	780,074,149	92.15	106,260	17,153,574

Table S-4 Ranking of Top 100 FAA Towers by Total Enplanements, FY 2017

Rank	City	State	Location Identifier	Enplaned Passengers*	Percent of Total**	Cumulative Enplanements	Cumulative Percentage	Commercial Operations***	Cumulative Operations
81	TULSA	OK	TUL	1,351,682	0.16	781,425,831	92.31	47,048	17,200,622
82	BIRMINGHAM	AL	BHM	1,313,797	0.16	782,739,628	92.46	50,216	17,250,838
83	DES MOINES	IA	DSM	1,246,447	0.15	783,986,075	92.61	40,597	17,291,435
84	ROCHESTER	NY	ROC	1,190,144	0.14	785,176,219	92.75	45,483	17,336,918
85	SAVANNAH	GA	SAV	1,147,635	0.14	786,323,854	92.88	44,487	17,381,405
86	MYRTLE BEACH	SC	MYR	1,065,987	0.13	787,389,841	93.01	95,471	17,476,876
87	PALM SPRINGS	CA	PSP	1,030,648	0.12	788,420,489	93.13	29,802	17,506,678
88	GREER	SC	GSP	1,020,181	0.12	789,440,670	93.25	34,266	17,540,944
89	SYRACUSE	NY	SYR	998,662	0.12	790,439,332	93.37	42,701	17,583,645
90	ST PETERSBURG-CLEARWATER	FL	PIE	984,233	0.12	791,423,565	93.49	19,627	17,603,272
91	LITTLE ROCK	AR	LIT	972,475	0.11	792,396,040	93.60	34,738	17,638,010
92	MANCHESTER	NH	MHT	966,847	0.11	793,362,887	93.72	38,672	17,676,682
93	DAYTON	OH	DAY	966,033	0.11	794,328,920	93.83	38,492	17,715,174
94	KNOXVILLE	TN	TYS	940,681	0.11	795,269,601	93.94	42,520	17,757,694
95	MADISON	WI	MSN	927,071	0.11	796,196,672	94.05	30,458	17,788,152
96	PORTLAND	ME	PWM	917,706	0.11	797,114,378	94.16	32,633	17,820,785
97	GREENSBORO	NC	GSO	865,616	0.10	797,979,994	94.26	46,941	17,867,726
98	PENSACOLA	FL	PNS	822,161	0.10	798,802,155	94.36	26,561	17,894,287
99	WICHITA	KS	ICT	782,931	0.09	799,585,086	94.45	38,238	17,932,525
100	COLORADO SPRINGS	CO	COS	769,564	0.09	800,354,650	94.54	27,567	17,960,092
Total of airports 101 thru 518				41,294,282	4.88	841,648,932	99.42	4,266,778	22,226,870

*Enplanements include air carrier, commuter and international.

**Percent is of national total enplanements.

***Operations include itinerant air carrier and air taxi only.

Table S-5 Summary of Enplanements and Airport Operations at FAA Towers and Contract Towers

Enplanements at Towered Airports

	Count	2017	2045	Annual Compound Growth Rate 2017-2045
Large Hubs	30	611,804,140	1,085,355,905	2.07
Medium Hubs	31	136,590,361	245,140,354	2.11
Small Hubs	70	69,341,919	122,318,121	2.05
Non Hubs	387	23,912,512	37,661,819	1.64
Total	518	841,648,932	1,490,476,199	2.06

Operations at Towered Airports

	Count	2017	2045	Annual Compound Growth Rate 2017-2045
Large Hubs	30	12,788,893	19,757,486	1.57
Medium Hubs	31	4,806,145	7,063,143	1.38
Small Hubs	70	6,651,724	8,323,259	0.80
Non Hubs	387	26,138,945	30,266,937	0.53
Total	518	50,385,707	65,410,825	0.94

Table S-6 Commercial Airport Operations Summary by Region*

Fiscal Year	Alaska (AAL)	Central (ACE)	Eastern (AEA)	Great Lakes (AGL)	New England (ANE)	Northwest Mountain (ANM)	Southern (ASO)	Southwest (ASW)	Western Pacific (AWP)	National Total
Historical										
2014	975,078	720,648	3,584,168	3,672,419	939,378	2,296,273	5,040,093	2,723,520	4,462,686	24,414,263
2015	1,008,977	707,688	3,563,852	3,607,037	919,479	2,260,776	5,251,137	2,713,659	4,538,884	24,571,489
2016	973,226	718,157	3,612,550	3,619,727	931,912	2,323,156	5,330,283	2,661,833	4,645,971	24,816,815
2017	976,856	728,832	3,602,483	3,610,198	931,436	2,378,068	5,393,123	2,611,372	4,826,924	25,059,292
Forecast										
2018	993,346	740,305	3,667,104	3,683,998	946,238	2,450,744	5,597,105	2,711,007	4,866,960	25,656,807
2019	1,016,049	757,419	3,753,410	3,751,710	956,276	2,552,676	5,806,274	2,819,324	4,938,017	26,351,155
2020	1,022,597	756,728	3,759,828	3,704,526	966,388	2,589,062	5,866,833	2,828,267	5,022,767	26,516,996
2021	1,028,929	761,656	3,799,356	3,714,713	979,015	2,628,039	5,954,252	2,857,523	5,109,805	26,833,288
2022	1,035,428	762,415	3,815,025	3,689,926	989,233	2,656,499	6,020,781	2,869,661	5,188,372	27,027,340
2023	1,041,774	760,717	3,815,720	3,641,071	997,864	2,678,437	6,074,392	2,872,249	5,259,901	27,142,125
2024	1,048,064	766,553	3,854,024	3,661,703	1,009,765	2,714,258	6,162,256	2,903,196	5,335,769	27,455,588
2025	1,054,389	774,855	3,907,447	3,707,319	1,023,029	2,755,193	6,262,739	2,943,176	5,414,280	27,842,427
2026	1,060,717	783,157	3,960,834	3,753,125	1,036,308	2,796,485	6,364,022	2,983,436	5,493,381	28,231,465
2027	1,067,207	791,722	4,015,549	3,800,599	1,049,944	2,839,123	6,469,311	3,024,587	5,574,382	28,632,424
2028	1,073,891	800,575	4,071,079	3,849,766	1,064,080	2,883,011	6,573,872	3,067,248	5,658,202	29,041,724
2029	1,080,651	809,682	4,127,615	3,900,458	1,078,777	2,928,088	6,680,212	3,111,183	5,744,099	29,460,765
2030	1,087,588	819,065	4,180,751	3,952,770	1,094,103	2,975,047	6,788,896	3,156,484	5,833,370	29,888,074
2031	1,094,787	828,611	4,234,871	4,006,121	1,109,855	3,023,305	6,900,452	3,202,767	5,925,039	30,325,808
2032	1,102,113	838,184	4,289,393	4,059,982	1,125,728	3,072,233	7,013,857	3,249,379	6,017,959	30,768,828
2033	1,109,584	847,852	4,344,012	4,114,213	1,141,677	3,121,570	7,127,744	3,296,459	6,111,586	31,214,697
2034	1,117,192	857,703	4,399,489	4,169,407	1,157,975	3,172,124	7,243,172	3,344,572	6,207,577	31,669,211
2035	1,124,908	867,615	4,454,928	4,224,868	1,174,306	3,223,368	7,358,682	3,392,921	6,304,197	32,125,793
2036	1,132,726	877,614	4,510,911	4,280,798	1,190,816	3,275,021	7,476,078	3,441,597	6,402,142	32,587,703
2037	1,140,627	887,653	4,567,121	4,337,060	1,207,506	3,327,306	7,593,733	3,490,856	6,501,208	33,053,070
2038	1,148,647	897,817	4,623,970	4,393,962	1,224,412	3,379,953	7,713,281	3,540,156	6,600,991	33,523,189
2039	1,156,795	908,075	4,680,719	4,450,983	1,241,340	3,433,034	7,833,707	3,589,424	6,700,535	33,994,612
2040	1,164,976	918,376	4,737,627	4,508,301	1,258,372	3,487,069	7,954,580	3,639,090	6,801,323	34,469,714
2041	1,173,311	928,538	4,794,256	4,564,811	1,275,206	3,541,135	8,075,006	3,688,169	6,901,551	34,941,983
2042	1,181,783	938,848	4,851,224	4,622,075	1,292,287	3,596,149	8,197,092	3,738,295	7,002,695	35,420,448
2043	1,190,268	949,288	4,908,698	4,680,293	1,309,680	3,652,172	8,320,998	3,789,280	7,105,794	35,906,471
2044	1,198,919	959,909	4,966,963	4,739,435	1,327,303	3,709,190	8,446,821	3,840,921	7,210,865	36,400,326
2045	1,207,758	970,759	5,026,170	4,800,007	1,345,340	3,767,881	8,575,625	3,893,669	7,318,225	36,905,434

*Includes air carrier and commuter/air taxi operations at all airports.

Table S-7 Itinerant Airport Operations Summary by Region*

Fiscal Year	Alaska (AAL)	Central (ACE)	Eastern (AEA)	Great Lakes (AGL)	New England (ANÉ)	Northwest Mountain (ANM)	Southern (ASO)	Southwest (ASW)	Western Pacific (AWP)	National Total
Historical										
2014	1,509,699	2,553,132	6,776,695	8,606,898	2,171,164	6,203,713	14,361,181	7,599,349	10,619,462	60,401,293
2015	1,497,293	2,541,888	6,727,202	8,536,359	2,101,617	6,184,391	14,654,179	7,534,682	10,678,912	60,456,523
2016	1,464,830	2,530,138	6,797,293	8,634,123	2,058,550	6,157,650	14,531,138	7,481,520	10,682,806	60,338,048
2017	1,476,476	2,540,189	6,759,075	8,599,497	2,029,663	6,203,035	14,673,083	7,406,944	10,836,952	60,524,914
Forecast										
2018	1,506,778	2,533,683	6,789,833	8,668,983	2,023,253	6,412,314	14,954,348	7,526,786	11,016,562	61,432,540
2019	1,539,280	2,548,441	6,855,709	8,753,180	2,027,187	6,585,133	15,221,435	7,615,750	11,144,433	62,290,548
2020	1,546,518	2,548,797	6,872,840	8,719,491	2,038,235	6,655,575	15,304,664	7,639,531	11,240,352	62,566,003
2021	1,553,543	2,554,778	6,923,177	8,742,818	2,051,799	6,728,933	15,415,024	7,683,891	11,338,644	62,992,607
2022	1,560,743	2,556,596	6,949,769	8,731,290	2,062,956	6,790,773	15,504,899	7,711,392	11,428,548	63,296,966
2023	1,567,791	2,555,959	6,961,522	8,695,727	2,072,531	6,846,649	15,582,125	7,729,545	11,511,501	63,523,350
2024	1,574,785	2,562,865	7,010,970	8,729,621	2,085,378	6,917,122	15,693,900	7,776,309	11,598,881	63,949,831
2025	1,581,817	2,572,239	7,075,677	8,788,726	2,099,592	6,993,314	15,818,569	7,832,389	11,688,991	64,451,314
2026	1,588,855	2,581,618	7,140,500	8,848,359	2,113,823	7,070,520	15,944,342	7,889,027	11,779,774	64,956,818
2027	1,596,060	2,591,264	7,206,794	8,909,837	2,128,415	7,149,743	16,074,555	7,946,809	11,872,547	65,476,024
2028	1,603,463	2,601,202	7,274,032	8,973,180	2,143,509	7,230,938	16,204,367	8,006,401	11,968,232	66,005,324
2029	1,610,943	2,611,401	7,342,432	9,038,193	2,159,167	7,314,030	16,336,283	8,067,546	12,066,086	66,546,081
2030	1,618,605	2,621,885	7,407,324	9,104,952	2,175,456	7,399,744	16,470,889	8,130,353	12,167,409	67,096,617
2031	1,626,532	2,632,544	7,473,354	9,172,919	2,192,174	7,487,519	16,608,717	8,194,445	12,271,224	67,659,428
2032	1,634,589	2,643,244	7,539,944	9,241,647	2,209,018	7,576,738	16,748,734	8,259,175	12,376,388	68,229,477
2033	1,642,794	2,654,049	7,606,799	9,310,970	2,225,940	7,667,172	16,889,604	8,324,683	12,482,362	68,804,373
2034	1,651,141	2,665,048	7,674,680	9,381,505	2,243,212	7,759,632	17,032,363	8,391,550	12,590,798	69,389,929
2035	1,659,599	2,676,124	7,742,686	9,452,571	2,260,522	7,853,649	17,175,575	8,458,978	12,699,974	69,979,678
2036	1,668,161	2,687,298	7,811,422	9,524,353	2,278,016	7,948,930	17,321,049	8,527,084	12,810,574	70,576,887
2037	1,676,810	2,698,527	7,880,559	9,596,773	2,295,691	8,045,708	17,467,152	8,596,122	12,922,397	71,179,739
2038	1,685,583	2,709,895	7,950,502	9,670,092	2,313,585	8,143,740	17,615,547	8,665,551	13,035,045	71,789,540
2039	1,694,485	2,721,369	8,020,526	9,743,798	2,331,506	8,243,140	17,765,219	8,735,307	13,147,565	72,402,915
2040	1,703,425	2,732,901	8,090,876	9,818,068	2,349,532	8,344,431	17,915,741	8,805,834	13,261,431	73,022,239
2041	1,712,523	2,744,307	8,161,131	9,891,807	2,367,365	8,446,117	18,066,230	8,876,157	13,374,855	73,640,492
2042	1,721,761	2,755,875	8,231,915	9,966,586	2,385,446	8,550,366	18,218,794	8,947,927	13,489,301	74,267,971
2043	1,731,014	2,767,586	8,303,407	10,042,600	2,403,843	8,656,642	18,373,612	9,020,951	13,605,818	74,905,473
2044	1,740,438	2,779,499	8,375,884	10,119,842	2,422,475	8,764,964	18,530,787	9,095,032	13,724,422	75,553,343
2045	1,750,055	2,791,655	8,449,505	10,198,816	2,441,524	8,876,026	18,691,381	9,170,645	13,845,437	76,215,044

*Includes itinerant air carrier, commuter/air taxi, general aviation and military operations at all airports.

TABLE S-8 Total Airport Operations Summary by Region*

Fiscal Year	Alaska (AAL)	Central (ACE)	Eastern (AEA)	Great Lakes (AGL)	New England (ANE)	Northwest Mountain (ANM)	Southern (ASO)	Southwest (ASW)	Western Pacific (AWP)	National Total
Historical										
2014	1,841,688	4,554,307	10,656,693	14,923,556	3,475,019	10,066,039	22,157,820	12,912,941	16,677,501	97,265,564
2015	1,861,740	4,545,615	10,612,366	14,844,715	3,364,203	10,204,655	22,499,963	12,937,371	16,706,448	97,577,076
2016	1,837,237	4,489,520	10,646,028	14,881,615	3,290,231	10,070,284	22,105,671	13,096,748	16,625,738	97,043,072
2017	1,858,575	4,493,801	10,553,453	14,866,443	3,206,257	10,090,556	22,372,409	13,015,095	16,861,079	97,317,668
Forecast										
2018	1,901,949	4,492,402	10,575,373	14,992,985	3,216,854	10,427,857	22,907,343	13,194,513	17,165,608	98,874,884
2019	1,939,725	4,515,011	10,666,944	15,121,207	3,233,428	10,672,287	23,305,832	13,325,093	17,360,820	100,140,347
2020	1,947,874	4,516,540	10,700,302	15,102,001	3,245,249	10,773,658	23,417,152	13,368,165	17,469,064	100,540,005
2021	1,955,810	4,523,704	10,766,500	15,146,281	3,259,590	10,878,309	23,555,960	13,432,146	17,579,763	101,098,063
2022	1,963,921	4,526,713	10,809,435	15,155,882	3,271,528	10,970,008	23,674,789	13,479,588	17,682,151	101,534,015
2023	1,971,882	4,527,277	10,837,753	15,141,580	3,281,886	11,056,286	23,781,352	13,518,011	17,777,674	101,893,701
2024	1,979,790	4,535,392	10,903,971	15,196,572	3,295,520	11,157,673	23,922,839	13,585,400	17,877,705	102,454,862
2025	1,987,737	4,545,981	10,985,680	15,277,105	3,310,525	11,265,290	24,077,602	13,662,440	17,980,545	103,092,905
2026	1,995,764	4,556,589	11,067,769	15,358,547	3,325,550	11,374,500	24,233,868	13,740,396	18,084,143	103,737,126
2027	2,003,959	4,567,470	11,151,569	15,442,101	3,340,936	11,486,305	24,395,125	13,819,858	18,189,815	104,397,138
2028	2,012,353	4,578,652	11,236,560	15,527,893	3,356,828	11,600,708	24,556,426	13,901,499	18,298,482	105,069,401
2029	2,020,824	4,590,107	11,322,972	15,615,622	3,373,287	11,717,638	24,720,269	13,985,090	18,409,402	105,755,211
2030	2,029,477	4,601,855	11,405,862	15,705,335	3,390,383	11,837,861	24,887,261	14,070,758	18,523,881	106,452,673
2031	2,038,396	4,613,788	11,490,150	15,796,571	3,407,910	11,960,819	25,057,937	14,158,114	18,640,941	107,164,626
2032	2,047,447	4,625,771	11,575,276	15,888,955	3,425,565	12,085,907	25,231,275	14,246,506	18,759,440	107,886,142
2033	2,056,721	4,637,868	11,660,950	15,982,338	3,443,305	12,212,924	25,405,949	14,336,093	18,878,835	108,614,983
2034	2,066,137	4,650,169	11,747,930	16,077,425	3,461,398	12,342,688	25,583,000	14,427,473	19,000,783	109,357,003
2035	2,075,665	4,662,560	11,835,321	16,173,462	3,479,532	12,474,755	25,761,005	14,519,864	19,123,563	110,105,727
2036	2,085,298	4,675,057	11,923,733	16,270,636	3,497,856	12,608,858	25,941,788	14,613,377	19,247,863	110,864,466
2037	2,095,018	4,687,621	12,012,845	16,368,872	3,516,362	12,745,244	26,123,717	14,708,278	19,373,472	111,631,429
2038	2,104,863	4,700,332	12,103,071	16,468,423	3,535,088	12,883,700	26,308,473	14,804,057	19,500,002	112,408,009
2039	2,114,839	4,713,161	12,193,691	16,568,801	3,553,845	13,024,344	26,495,043	14,900,625	19,626,495	113,190,844
2040	2,124,928	4,726,057	12,284,961	16,670,186	3,572,709	13,167,753	26,683,013	14,998,454	19,754,430	113,982,491
2041	2,135,188	4,738,840	12,376,462	16,771,490	3,591,384	13,311,948	26,871,516	15,096,584	19,882,024	114,775,436
2042	2,145,603	4,751,796	12,468,829	16,874,293	3,610,311	13,460,124	27,062,661	15,196,665	20,010,734	115,581,016
2043	2,156,046	4,764,905	12,562,250	16,978,802	3,629,559	13,611,272	27,256,644	15,298,529	20,141,619	116,399,626
2044	2,166,673	4,778,228	12,657,008	17,085,030	3,649,044	13,765,435	27,453,572	15,401,993	20,274,686	117,231,669
2045	2,177,507	4,791,804	12,753,259	17,193,483	3,668,950	13,923,327	27,654,534	15,507,543	20,410,267	118,080,674

*Includes all itinerant and local operations at all airports.

TABLE S-9 TRACON Operations Summary by Region*

Fiscal Year	Alaska (AAL)	Central (ACE)	Eastern (AEA)	Great Lakes (AGL)	New England (ANE)	Northwest Mountain (ANM)	Southern (ASO)	Southwest (ASW)	Western Pacific (AWP)	National Total
Historical										
2014	359,662	1,223,564	5,629,251	5,072,721	1,191,608	2,834,102	9,005,002	5,132,931	6,208,864	36,657,705
2015	370,069	1,220,302	5,657,365	5,022,396	1,184,633	2,860,833	9,230,649	5,150,627	6,338,774	37,035,648
2016	365,668	1,239,021	5,727,081	5,106,956	1,246,005	2,928,600	9,419,543	5,140,572	6,397,624	37,571,070
2017	358,680	1,258,237	5,614,327	5,150,934	1,245,198	3,012,336	9,675,985	5,142,501	6,491,009	37,949,207
Forecast										
2018	364,077	1,260,095	5,589,742	5,199,620	1,390,869	3,190,552	9,896,662	5,300,649	6,663,950	38,856,216
2019	367,872	1,274,066	5,645,550	5,276,071	1,432,798	3,291,174	10,135,494	5,395,546	6,774,447	39,593,018
2020	371,680	1,269,178	5,641,051	5,215,907	1,436,140	3,316,312	10,185,167	5,406,131	6,855,079	39,696,645
2021	375,343	1,273,505	5,682,690	5,225,990	1,447,537	3,354,182	10,280,678	5,442,189	6,944,796	40,026,910
2022	379,183	1,271,568	5,693,708	5,193,556	1,453,430	3,380,315	10,344,168	5,457,293	7,021,668	40,194,889
2023	382,892	1,265,790	5,685,467	5,131,697	1,455,578	3,398,322	10,387,489	5,460,366	7,088,645	40,256,246
2024	386,567	1,271,830	5,728,230	5,154,512	1,467,428	3,433,116	10,487,624	5,498,319	7,168,199	40,595,825
2025	390,270	1,281,760	5,791,069	5,207,745	1,482,874	3,474,665	10,608,276	5,547,399	7,253,261	41,037,319
2026	393,958	1,291,696	5,854,030	5,261,152	1,498,341	3,516,382	10,729,852	5,596,798	7,338,885	41,481,094
2027	397,754	1,301,934	5,918,649	5,316,453	1,514,232	3,559,471	10,855,751	5,647,247	7,426,650	41,938,141
2028	401,693	1,312,490	5,984,308	5,373,588	1,530,670	3,603,813	10,981,242	5,699,326	7,517,274	42,404,404
2029	405,675	1,323,338	6,051,183	5,432,469	1,547,726	3,649,331	11,108,869	5,752,824	7,610,100	42,881,515
2030	409,789	1,334,486	6,114,877	5,493,111	1,565,467	3,696,721	11,239,167	5,807,807	7,706,377	43,367,802
2031	414,131	1,345,829	6,179,795	5,555,005	1,583,693	3,745,387	11,372,712	5,863,922	7,805,164	43,865,638
2032	418,568	1,357,212	6,245,250	5,617,465	1,602,065	3,794,707	11,508,258	5,920,454	7,905,329	44,369,308
2033	423,106	1,368,698	6,310,875	5,680,320	1,620,523	3,844,403	11,644,442	5,977,510	8,006,234	44,876,111
2034	427,742	1,380,395	6,377,536	5,744,286	1,639,369	3,895,289	11,782,457	6,035,725	8,109,537	45,392,336
2035	432,449	1,392,154	6,444,202	5,808,517	1,658,255	3,946,833	11,920,662	6,094,217	8,213,517	45,910,806
2036	437,217	1,404,015	6,511,534	5,873,286	1,677,347	3,998,752	12,060,971	6,153,114	8,318,838	46,435,074
2037	442,037	1,415,922	6,579,173	5,938,421	1,696,630	4,051,258	12,201,680	6,212,647	8,425,247	46,963,015
2038	446,936	1,427,971	6,647,554	6,004,237	1,716,155	4,104,112	12,344,453	6,272,315	8,532,466	47,496,199
2039	451,918	1,440,117	6,715,871	6,070,152	1,735,703	4,157,353	12,488,231	6,331,989	8,639,446	48,030,780
2040	456,910	1,452,313	6,784,432	6,136,384	1,755,372	4,211,511	12,632,593	6,392,127	8,747,692	48,569,334
2041	462,001	1,464,357	6,852,670	6,201,716	1,774,814	4,265,634	12,776,497	6,451,650	8,855,348	49,104,687
2042	467,186	1,476,567	6,921,364	6,267,890	1,794,531	4,320,654	12,922,271	6,512,314	8,964,026	49,646,803
2043	472,370	1,488,932	6,990,703	6,335,123	1,814,607	4,376,646	13,070,117	6,573,950	9,074,694	50,197,142
2044	477,673	1,501,502	7,060,975	6,403,398	1,834,942	4,433,622	13,220,144	6,636,374	9,187,450	50,756,080
2045	483,108	1,514,337	7,132,405	6,473,297	1,855,754	4,492,260	13,373,514	6,700,081	9,302,605	51,327,361

TABLE S-10 Enplanements Summary by Region*

Fiscal Year	Alaska (AAL)	Central (ACE)	Eastern (AEA)	Great Lakes (AGL)	New England (ANE)	Northwest Mountain (ANM)	Southern (ASO)	Southwest (ASW)	Western Pacific (AWP)	National Total
Historical										
2014	4,461,781	16,562,601	121,874,137	100,740,204	23,253,706	70,663,874	173,781,263	87,326,650	154,865,661	753,529,877
2015	4,740,012	16,798,303	126,371,819	104,550,315	23,938,226	73,860,171	181,837,100	92,166,318	162,122,322	786,384,586
2016	4,823,423	17,618,426	131,354,964	108,775,184	25,292,220	79,419,049	190,462,825	94,205,060	170,635,001	822,586,152
2017	4,803,525	18,599,796	133,998,184	110,746,735	26,626,226	83,795,694	194,849,675	94,862,874	178,274,030	846,556,739
Forecast										
2018	4,950,477	19,592,923	140,071,179	113,942,046	28,386,580	88,016,703	204,273,808	101,292,307	186,501,015	887,027,038
2019	5,125,640	20,579,981	145,777,530	117,303,699	29,715,772	93,357,453	216,942,841	107,028,785	191,543,240	927,374,941
2020	5,235,152	21,009,215	149,733,773	119,959,445	30,440,961	96,076,914	222,607,396	109,704,077	196,573,948	951,340,881
2021	5,335,326	21,388,412	153,811,338	122,356,332	31,122,950	98,458,242	227,952,572	111,855,103	201,316,695	973,596,970
2022	5,427,188	21,741,204	157,891,826	124,610,062	31,764,499	100,669,377	233,037,697	114,029,258	205,857,923	995,029,034
2023	5,513,184	22,086,843	161,974,391	126,793,371	32,386,201	102,772,417	237,989,622	116,126,641	210,154,794	1,015,797,464
2024	5,595,632	22,415,676	165,430,905	128,852,017	32,984,864	104,738,003	242,722,430	118,106,562	214,222,798	1,035,068,887
2025	5,677,793	22,741,378	168,675,823	130,899,658	33,583,656	106,686,851	247,416,821	120,096,204	218,265,287	1,054,043,471
2026	5,759,022	23,066,417	171,880,113	132,948,206	34,182,281	108,636,936	252,114,698	122,096,434	222,333,523	1,073,017,630
2027	5,843,868	23,403,991	175,124,488	135,079,532	34,799,140	110,656,655	257,002,543	124,142,482	226,507,889	1,092,560,588
2028	5,933,308	23,754,970	178,385,802	137,293,698	35,441,730	112,742,551	261,995,137	126,266,235	230,837,096	1,112,650,527
2029	6,023,967	24,117,436	181,711,375	139,583,546	36,111,260	114,889,051	267,145,661	128,453,941	235,283,938	1,133,320,175
2030	6,118,224	24,492,531	184,835,233	141,953,147	36,812,195	117,131,816	272,406,671	130,712,388	239,916,471	1,154,378,676
2031	6,214,976	24,874,770	187,983,611	144,375,260	37,536,014	119,439,474	277,821,287	133,023,789	244,679,865	1,175,949,046
2032	6,312,454	25,257,811	191,145,354	146,822,881	38,266,619	121,779,326	283,336,698	135,352,327	249,516,877	1,197,790,347
2033	6,412,647	25,644,397	194,307,773	149,282,079	39,000,686	124,134,828	288,868,822	137,702,654	254,386,755	1,219,740,641
2034	6,515,731	26,039,032	197,507,547	151,786,677	39,751,508	126,550,497	294,470,996	140,104,609	259,386,048	1,242,112,645
2035	6,620,825	26,435,437	200,700,411	154,298,723	40,503,376	128,994,133	300,066,191	142,514,941	264,411,092	1,264,545,129
2036	6,727,561	26,835,187	203,915,708	156,831,637	41,263,233	131,455,472	305,738,029	144,939,109	269,502,300	1,287,208,236
2037	6,835,781	27,236,046	207,139,195	159,378,634	42,031,543	133,947,780	311,417,713	147,390,791	274,646,887	1,310,024,370
2038	6,946,188	27,641,803	210,392,037	161,953,596	42,809,785	136,451,378	317,194,562	149,842,291	279,825,735	1,333,057,375
2039	7,058,886	28,051,328	213,635,269	164,529,931	43,588,626	138,971,604	323,009,951	152,288,740	284,981,205	1,356,115,540
2040	7,171,452	28,461,537	216,883,874	167,115,622	44,371,870	141,532,710	328,831,342	154,752,621	290,193,977	1,379,315,005
2041	7,287,000	28,864,318	220,114,649	169,657,711	45,144,930	144,089,180	334,625,624	157,183,768	295,364,765	1,402,331,945
2042	7,405,285	29,273,530	223,360,930	172,234,402	45,930,363	146,689,445	340,503,257	159,666,892	300,578,089	1,425,642,193
2043	7,523,113	29,688,461	226,629,731	174,855,342	46,731,261	149,337,907	346,472,266	162,192,338	305,895,265	1,449,325,684
2044	7,644,711	30,111,634	229,937,010	177,520,210	47,542,736	152,035,720	352,536,942	164,748,799	311,318,559	1,473,396,321
2045	7,770,482	30,545,195	233,286,215	180,253,283	48,375,137	154,814,166	358,755,283	167,359,216	316,861,870	1,498,020,847

*Includes both tower and non-tower airports.

TABLE S-11 Based Aircraft Summary by Region*

Fiscal Year	Alaska (AAL)	Central (ACE)	Eastern (AEA)	Great Lakes (AGL)	New England (ANE)	Northwest Mountain (ANM)	Southern (ASO)	Southwest (ASW)	Western Pacific (AWP)	National Total
Historical										
2014	4,728	9,917	15,833	27,565	6,291	22,814	32,163	22,520	28,482	170,313
2015	4,656	9,562	14,929	27,020	5,729	22,258	30,798	21,658	27,349	163,959
2016	4,693	10,050	15,516	28,385	5,956	23,628	33,047	23,734	28,851	173,860
2017	4,724	9,760	14,644	27,558	5,680	22,559	31,875	22,615	27,725	167,140
Forecast										
2018	4,739	9,812	14,786	27,804	5,728	22,804	32,141	22,822	27,979	168,615
2019	4,754	9,856	14,911	27,981	5,777	23,004	32,436	23,035	28,234	169,988
2020	4,766	9,895	15,023	28,178	5,832	23,219	32,692	23,235	28,486	171,326
2021	4,782	9,944	15,165	28,357	5,888	23,466	32,972	23,468	28,742	172,784
2022	4,796	9,991	15,298	28,546	5,935	23,686	33,262	23,688	29,010	174,212
2023	4,811	10,057	15,434	28,741	5,998	23,939	33,564	23,918	29,296	175,758
2024	4,828	10,108	15,551	28,910	6,055	24,155	33,880	24,140	29,567	177,194
2025	4,841	10,158	15,664	29,094	6,109	24,373	34,152	24,354	29,837	178,582
2026	4,855	10,206	15,779	29,264	6,163	24,584	34,427	24,571	30,109	179,958
2027	4,869	10,255	15,902	29,448	6,218	24,797	34,712	24,789	30,383	181,373
2028	4,883	10,307	16,021	29,619	6,272	25,013	35,004	25,006	30,659	182,784
2029	4,897	10,357	16,135	29,803	6,327	25,228	35,305	25,228	30,938	184,218
2030	4,911	10,411	16,258	29,986	6,382	25,443	35,603	25,466	31,221	185,681
2031	4,925	10,461	16,381	30,142	6,436	25,661	35,925	25,697	31,501	187,129
2032	4,939	10,511	16,502	30,323	6,492	25,878	36,222	25,928	31,783	188,578
2033	4,953	10,564	16,622	30,503	6,548	26,098	36,519	26,158	32,070	190,035
2034	4,967	10,614	16,740	30,691	6,606	26,321	36,832	26,397	32,363	191,531
2035	4,981	10,667	16,865	30,868	6,663	26,549	37,136	26,643	32,661	193,033
2036	4,995	10,718	16,985	31,053	6,721	26,779	37,484	26,892	32,965	194,592
2037	5,009	10,770	17,114	31,231	6,781	27,010	37,800	27,146	33,273	196,134
2038	5,023	10,824	17,240	31,424	6,844	27,244	38,127	27,400	33,582	197,708
2039	5,037	10,880	17,366	31,615	6,908	27,480	38,447	27,660	33,896	199,289
2040	5,051	10,939	17,495	31,797	6,974	27,721	38,784	27,925	34,212	200,898
2041	5,065	10,995	17,625	31,985	7,040	27,950	39,139	28,185	34,530	202,514
2042	5,079	11,053	17,756	32,165	7,108	28,194	39,477	28,450	34,849	204,131
2043	5,093	11,111	17,888	32,353	7,176	28,443	39,819	28,719	35,175	205,777
2044	5,107	11,170	18,020	32,533	7,246	28,703	40,179	28,998	35,507	207,463
2045	5,122	11,230	18,156	32,724	7,317	28,964	40,533	29,281	35,844	209,171

*Includes both tower and non-tower airports.

Appendix A: Description of Activity Measures

Air Carrier Enplanements

These data summarize domestic enplaned passengers (originations and connections) of U.S. commercial air carriers and international enplanements for both U.S. and foreign flag carriers submitted to the U.S. Department of Transportation (DOT), Bureau of Transportation Statistics (BTS) on T-100 reports. Estimates include both scheduled and non-scheduled enplaned passengers.

Regional Enplanements

Starting in FY 2003, FAA includes in the regional category enplanements for those airlines whose primary function is to provide passenger feed to mainline carriers, regardless of aircraft size. As of October 2002, all scheduled and non-scheduled operations using aircraft with 10 or more seats to transport regional passengers must report on T-100.

Historic enplanement data includes originating passengers on scheduled commuter or regional carriers as reported on DOT Form 41 and 298-C; where possible, adjustments were made to include connecting passengers. Historically, Form 298-C included carriers operating at least five scheduled round trips per week whose entire fleet consists of aircraft having 60 seats or less.

Aircraft Operations

FAA air traffic controllers count landings and takeoffs at FAA towered airports. Controllers employed by an FAA contractor count operations at FAA contract towers. At non-FAA facilities, operations counts represent an estimate.

Air carrier operations represent either takeoffs or landings of commercial aircraft with seating capacity of more than 60 seats.

Commuter/air taxi operations are one category. Commuter operations include takeoffs and landings by aircraft with 60 or fewer seats that transport regional passengers on scheduled commercial flights. Air taxi operations include takeoffs and landings by aircraft with 60 or fewer seats conducted on non-scheduled or for-hire flights.

Itinerant general aviation and local civil operations represent all civil aviation aircraft takeoffs and landings not classified as commercial. Military operations represent takeoffs and landings by military aircraft. Operations are either itinerant or local flights.

Local Operations

Aircraft operating in the traffic pattern or within sight of the tower, or aircraft known to be departing or arriving from flight in local practice areas, or aircraft executing practice instrument approaches at the airport.

Itinerant Operations

FAA reports all aircraft operations other than local operations as itinerant. Essentially, these data represent takeoffs and landings of aircraft going from one airport to another.

Tracon Operations

These data include arrivals, departures, and overflights conducted by an FAA radar approach control facility for aircraft under Instrument Flight Rule (IFR) or Visual Flight Rule (VFR) plans.

Overflights

These data include operations of aircraft in transit through the approach control facility airspace.

Appendix B: List of FAA Towers by Hub Size and FAA Contract Towers

Table B-1 List of Large Hub Towers

Location Identifier	Region	Airport Name	City, State
ATL	ASO	HARTSFIELD - JACKSON ATLANTA INTL	ATLANTA, GA
BOS	ANE	GENERAL EDWARD LAWRENCE LOGAN INTL	BOSTON, MA
BWI	AEA	BALTIMORE/WASHINGTON INTL THURGOOD MARSHALL	BALTIMORE, MD
CLT	ASO	CHARLOTTE/DOUGLAS INTL	CHARLOTTE, NC
DCA	AEA	RONALD REAGAN WASHINGTON NATIONAL	WASHINGTON, DC
DEN	ANM	DENVER INTL	DENVER, CO
DFW	ASW	DALLAS-FORT WORTH INTL	DALLAS-FORT WORTH, TX
DTW	AGL	DETROIT METROPOLITAN WAYNE COUNTY	DETROIT, MI
EWR	AEA	NEWARK LIBERTY INTL	NEWARK, NJ
FLL	ASO	FORT LAUDERDALE/HOLLYWOOD INTL	FORT LAUDERDALE, FL
HNL	AWP	DANIEL K INOUYE INTL	HONOLULU, HI
IAD	AEA	WASHINGTON DULLES INTL	WASHINGTON, DC
IAH	ASW	GEORGE BUSH INTERCONTINENTAL/HOUSTON	HOUSTON, TX
JFK	AEA	JOHN F KENNEDY INTL	NEW YORK, NY
LAS	AWP	MC CARRAN INTL	LAS VEGAS, NV
LAX	AWP	LOS ANGELES INTL	LOS ANGELES, CA
LGA	AEA	LAGUARDIA	NEW YORK, NY
MCO	ASO	ORLANDO INTL	ORLANDO, FL
MDW	AGL	CHICAGO MIDWAY INTL	CHICAGO, IL
MIA	ASO	MIAMI INTL	MIAMI, FL
MSP	AGL	MINNEAPOLIS-ST PAUL INTL/WOLD-CHAMBERLAIN	MINNEAPOLIS, MN
ORD	AGL	CHICAGO O'HARE INTL	CHICAGO, IL
PDX	ANM	PORTLAND INTL	PORTLAND, OR
PHL	AEA	PHILADELPHIA INTL	PHILADELPHIA, PA
PHX	AWP	PHOENIX SKY HARBOR INTL	PHOENIX, AZ
SAN	AWP	SAN DIEGO INTL	SAN DIEGO, CA
SEA	ANM	SEATTLE-TACOMA INTL	SEATTLE, WA
SFO	AWP	SAN FRANCISCO INTL	SAN FRANCISCO, CA
SLC	ANM	SALT LAKE CITY INTL	SALT LAKE CITY, UT
TPA	ASO	TAMPA INTL	TAMPA, FL

Listed 30 Airports

Table B-2 List of Medium Hub Towers

Location Identifier	Region	Airport Name	City, State
ABQ	ASW	ALBUQUERQUE INTL SUNPORT	ALBUQUERQUE, NM
ANC	AAL	TED STEVENS ANCHORAGE INTL	ANCHORAGE, AK
AUS	ASW	AUSTIN-BERGSTROM INTL	AUSTIN, TX
BDL	ANE	BRADLEY INTL	WINDSOR LOCKS, CT
BNA	ASO	NASHVILLE INTL	NASHVILLE, TN
BUF	AEA	BUFFALO NIAGARA INTL	BUFFALO, NY
BUR	AWP	BOB HOPE	BURBANK, CA
CLE	AGL	CLEVELAND-HOPKINS INTL	CLEVELAND, OH
CMH	AGL	JOHN GLENN COLUMBUS INTL	COLUMBUS, OH
CVG	ASO	CINCINNATI/NORTHERN KENTUCKY INTL	COVINGTON, KY
DAL	ASW	DALLAS LOVE FIELD	DALLAS, TX
HOU	ASW	WILLIAM P HOBBY	HOUSTON, TX
IND	AGL	INDIANAPOLIS INTL	INDIANAPOLIS, IN
JAX	ASO	JACKSONVILLE INTL	JACKSONVILLE, FL
MCI	ACE	KANSAS CITY INTL	KANSAS CITY, MO
MKE	AGL	GENERAL MITCHELL INTL	MILWAUKEE, WI
MSY	ASW	LOUIS ARMSTRONG NEW ORLEANS INTL	NEW ORLEANS, LA
OAK	AWP	METROPOLITAN OAKLAND INTL	OAKLAND, CA
OGG	AWP	KAHULUI	KAHULUI, HI
OMA	ACE	EPPLEY AIRFIELD	OMAHA, NE
ONT	AWP	ONTARIO INTL	ONTARIO, CA
PBI	ASO	PALM BEACH INTL	WEST PALM BEACH, FL
PIT	AEA	PITTSBURGH INTL	PITTSBURGH, PA
RDU	ASO	RALEIGH-DURHAM INTL	RALEIGH/DURHAM, NC
RSW	ASO	SOUTHWEST FLORIDA INTL	FORT MYERS, FL
SAT	ASW	SAN ANTONIO INTL	SAN ANTONIO, TX
SJC	AWP	NORMAN Y MINETA SAN JOSE INTL	SAN JOSE, CA
SJU	ASO	LUIS MUNOZ MARIN INTL	SAN JUAN, PR
SMF	AWP	SACRAMENTO INTL	SACRAMENTO, CA
SNA	AWP	JOHN WAYNE AIRPORT-ORANGE COUNTY	SANTA ANA, CA
STL	ACE	ST LOUIS LAMBERT INTL	ST LOUIS, MO

Listed 31 Airports

Table B-3 List of Small Hub Towers

Location Identifier	Region	Airport Name	City, State
ACY	AEA	ATLANTIC CITY INTL	ATLANTIC CITY, NJ
ALB	AEA	ALBANY INTL	ALBANY, NY
AVL	ASO	ASHEVILLE RGNL	ASHEVILLE, NC
BHM	ASO	BIRMINGHAM-SHUTTLESWORTH INTL	BIRMINGHAM, AL
BOI	ANM	BOISE AIR TERMINAL/GOWEN FLD	BOISE, ID
BTV	ANE	BURLINGTON INTL	BURLINGTON, VT
BZN	ANM	BOZEMAN YELLOWSTONE INTL	BOZEMAN, MT
CAE	ASO	COLUMBIA METROPOLITAN	COLUMBIA, SC
CAK	AGL	AKRON-CANTON RGNL	AKRON, OH
CHA	ASO	LOVELL FIELD	CHATTANOOGA, TN
CHS	ASO	CHARLESTON AFB/INTL	CHARLESTON, SC
CID	ACE	THE EASTERN IOWA	CEDAR RAPIDS, IA
COS	ANM	CITY OF COLORADO SPRINGS MUNI	COLORADO SPRINGS, CO
DAY	AGL	JAMES M COX DAYTON INTL	DAYTON, OH
DSM	ACE	DES MOINES INTL	DES MOINES, IA
ECP	ASO	NORTHWEST FLORIDA BEACHES INTL	PANAMA CITY, FL
ELP	ASW	EL PASO INTL	EL PASO, TX
EUG	ANM	MAHLON SWEET FIELD	EUGENE, OR
FAI	AAL	FAIRBANKS INTL	FAIRBANKS, AK
FAT	AWP	FRESNO YOSEMITE INTL	FRESNO, CA
FSD	AGL	JOE FOSS FIELD	SIOUX FALLS, SD
GEG	ANM	SPOKANE INTL	SPOKANE, WA
GRR	AGL	GERALD R FORD INTL	GRAND RAPIDS, MI
GSN	AWP	FRANCISCO C ADA/SAIPAN INTL	SAIPAN ISLAND, CQ
GSO	ASO	PIEDMONT TRIAD INTL	GREENSBORO, NC
GSP	ASO	GREENVILLE SPARTANBURG INTL	GREER, SC
GUM	AWP	GUAM INTL	GUAM, GU
HPN	AEA	WESTCHESTER COUNTY	WHITE PLAINS, NY
HSV	ASO	HUNTSVILLE INTL-CARL T JONES FIELD	HUNTSVILLE, AL
ICT	ACE	WICHITA DWIGHT D EISENHOWER NATIONAL	WICHITA, KS
ILM	ASO	WILMINGTON INTL	WILMINGTON, NC
ISP	AEA	LONG ISLAND MAC ARTHUR	NEW YORK, NY
ITO	AWP	HILO INTL	HILO, HI
IWA	AWP	PHOENIX-MESA GATEWAY	PHOENIX, AZ
JAN	ASO	JACKSON-MEDGAR WILEY EVERS INTL	JACKSON, MS
KOA	AWP	ELLISON ONIZUKA KONA INTL AT KEAHOLE	KAILUA/KONA, HI
LBB	ASW	LUBBOCK PRESTON SMITH INTL	LUBBOCK, TX
LEX	ASO	BLUE GRASS	LEXINGTON, KY
LGB	AWP	LONG BEACH /DAUGHERTY FIELD/	LONG BEACH, CA
LIH	AWP	LIHUE	LIHUE, HI
LIT	ASW	BILL AND HILLARY CLINTON NATIONAL/ADAMS FIELD	LITTLE ROCK, AR
MAF	ASW	MIDLAND INTL AIR AND SPACE PORT	MIDLAND, TX
MDT	AEA	HARRISBURG INTL	HARRISBURG, PA
MEM	ASO	MEMPHIS INTL	MEMPHIS, TN
MFR	ANM	ROGUE VALLEY INTL - MEDFORD	MEDFORD, OR
MHT	ANE	MANCHESTER	MANCHESTER, NH
MSN	AGL	DANE COUNTY RGNL-TRUAX FIELD	MADISON, WI
MYR	ASO	MYRTLE BEACH INTL	MYRTLE BEACH, SC
OKC	ASW	WILL ROGERS WORLD	OKLAHOMA CITY, OK
ORF	AEA	NORFOLK INTL	NORFOLK, VA
PGD	ASO	PUNTA GORDA	PUNTA GORDA, FL
PIE	ASO	ST PETE-CLEARWATER INTL	ST PETERSBURG-CLEARWATER , FL
PNS	ASO	PENSACOLA INTL	PENSACOLA, FL
PSP	AWP	PALM SPRINGS INTL	PALM SPRINGS, CA
PVD	ANE	THEODORE FRANCIS GREEN STATE	PROVIDENCE, RI
PWM	ANE	PORTLAND INTL JETPORT	PORTLAND, ME
RIC	AEA	RICHMOND INTL	RICHMOND, VA
RNO	AWP	RENO/TAHOE INTL	RENO, NV
ROC	AEA	GREATER ROCHESTER INTL	ROCHESTER, NY
SAV	ASO	SAVANNAH/HILTON HEAD INTL	SAVANNAH, GA

Table B-3 List of Small Hub Towers

Location Identifier	Region	Airport Name	City, State
SDF	ASO	LOUISVILLE INTL-STANDIFORD FIELD	LOUISVILLE, KY
SFB	ASO	ORLANDO SANFORD INTL	ORLANDO, FL
SGF	ACE	SPRINGFIELD-BRANSON NATIONAL	SPRINGFIELD, MO
SRQ	ASO	SARASOTA/BRADENTON INTL	SARASOTA/BRADENTON, FL
STT	ASO	CYRIL E KING	CHARLOTTE AMALIE, VI
SYR	AEA	SYRACUSE HANCOCK INTL	SYRACUSE, NY
TUL	ASW	TULSA INTL	TULSA, OK
TUS	AWP	TUCSON INTL	TUCSON, AZ
TYS	ASO	MC GHEE TYSON	KNOXVILLE, TN
XNA	ASW	NORTHWEST ARKANSAS RGNL	FAYETTEVILLE/SPRINGDALE/ROGERS, AR

Listed 70 Airports

Table B-4 List of Non-Hub Towers

Location Identifier	Region	Airport Name	City, State
ABE	AEA	LEHIGH VALLEY INTL	ALLENTOWN, PA
ABI	ASW	ABILENE RGNL	ABILENE, TX
ABY	ASO	SOUTHWEST GEORGIA RGNL	ALBANY, GA
ACK	ANE	NANTUCKET MEMORIAL	NANTUCKET, MA
ACT	ASW	WACO RGNL	WACO, TX
ADM	ASW	ARDMORE MUNI	ARDMORE, OK
ADQ	AAL	KODIAK	KODIAK, AK
ADS	ASW	ADDISON	DALLAS, TX
ADW	AEA	JOINT BASE ANDREWS	CAMP SPRINGS, MD
AEG	ASW	DOUBLE EAGLE II	ALBUQUERQUE, NM
AEX	ASW	ALEXANDRIA INTL	ALEXANDRIA, LA
AFW	ASW	FORT WORTH ALLIANCE	FORT WORTH, TX
AGC	AEA	ALLEGHENY COUNTY	PITTSBURGH, PA
AGS	ASO	AUGUSTA RGNL AT BUSH FIELD	AUGUSTA, GA
AHN	ASO	ATHENS/BEN EPPS	ATHENS, GA
AKN	AAL	KING SALMON	KING SALMON, AK
ALN	AGL	ST LOUIS RGNL	ALTON/ST LOUIS, IL
ALO	ACE	WATERLOO RGNL	WATERLOO, IA
ALW	ANM	WALLA WALLA RGNL	WALLA WALLA, WA
AMA	ASW	RICK HUSBAND AMARILLO INTL	AMARILLO, TX
ANE	AGL	ANOKA COUNTY-BLAINE (JANES FIELD)	MINNEAPOLIS, MN
APA	ANM	CENTENNIAL	DENVER, CO
APC	AWP	NAPA COUNTY	NAPA, CA
APF	ASO	NAPLES MUNI	NAPLES, FL
ARA	ASW	ACADIANA RGNL	NEW IBERIA, LA
ARB	AGL	ANN ARBOR MUNI	ANN ARBOR, MI
ARR	AGL	AURORA MUNI	CHICAGO/AURORA, IL
ASE	ANM	ASPEN-PITKIN CO/SARDY FIELD	ASPEN, CO
ASG	ASW	SPRINGDALE MUNI	SPRINGDALE, AR
ASH	ANE	BOIRE FIELD	NASHUA, NH
ATW	AGL	APPLETON INTL	APPLETON, WI
AVP	AEA	WILKES-BARRE/SCRANTON INTL	WILKES-BARRE/SCRANTON, PA
AZO	AGL	KALAMAZOO/BATTLE CREEK INTL	KALAMAZOO, MI
BAF	ANE	WESTFIELD-BARNES RGNL	WESTFIELD/SPRINGFIELD, MA
BAK	AGL	COLUMBUS MUNI	COLUMBUS, IN
BAZ	ASW	NEW BRAUNFELS RGNL	NEW BRAUNFELS, TX
BBG	ACE	BRANSON	BRANSON, MO
BCT	ASO	BOCA RATON	BOCA RATON, FL
BDR	ANE	IGOR I SIKORSKY MEMORIAL	BRIDGEPORT, CT
BED	ANE	LAURENCE G HANSCOM FLD	BEDFORD, MA
BET	AAL	BETHEL	BETHEL, AK
BFI	ANM	BOEING FIELD/KING COUNTY INTL	SEATTLE, WA
BFL	AWP	MEADOWS FIELD	BAKERSFIELD, CA
BFM	ASO	MOBILE DOWNTOWN	MOBILE, AL
BGM	AEA	GREATER BINGHAMTON/EDWIN A LINK FIELD	BINGHAMTON, NY
BGR	ANE	BANGOR INTL	BANGOR, ME
BIL	ANM	BILLINGS LOGAN INTL	BILLINGS, MT
BIS	AGL	BISMARCK MUNI	BISMARCK, ND
BJC	ANM	ROCKY MOUNTAIN METROPOLITAN	DENVER, CO
BKL	AGL	BURKE LAKEFRONT	CLEVELAND, OH
BKV	ASO	BROOKSVILLE-TAMPA BAY RGNL	BROOKSVILLE, FL
BLI	ANM	BELLINGHAM INTL	BELLINGHAM, WA
BMG	AGL	MONROE COUNTY	BLOOMINGTON, IN
BMI	AGL	CENTRAL IL RGNL ARPT AT BLOOMINGTON-NORMAL	BLOOMINGTON/NORMAL, IL
BPT	ASW	JACK BROOKS RGNL	BEAUMONT/PORT ARTHUR, TX
BQN	ASO	RAFAEL HERNANDEZ	AGUADILLA, PR
BRO	ASW	BROWNSVILLE/SOUTH PADRE ISLAND INTL	BROWNSVILLE, TX
BTL	AGL	W K KELLOGG	BATTLE CREEK, MI
BTR	ASW	BATON ROUGE METROPOLITAN, RYAN FIELD	BATON ROUGE, LA
BVY	ANE	BEVERLY RGNL	BEVERLY, MA
CCR	AWP	BUCHANAN FIELD	CONCORD, CA
CDW	AEA	ESSEX COUNTY	CALDWELL, NJ
CGF	AGL	CUYAHOGA COUNTY	CLEVELAND, OH
CHD	AWP	CHANDLER MUNI	CHANDLER, AZ
CHO	AEA	CHARLOTTESVILLE-ALBEMARLE	CHARLOTTESVILLE, VA
CIC	AWP	CHICO MUNI	CHICO, CA
CKB	AEA	NORTH CENTRAL WEST VIRGINIA	CLARKSBURG, WV
CLL	ASW	EASTERWOOD FIELD	COLLEGE STATION, TX
CMA	AWP	CAMARILLO	CAMARILLO, CA
CMI	AGL	UNIVERSITY OF ILLINOIS-WILLARD	CHAMPAIGN/URBANA, IL

Table B-4 List of Non-Hub Towers

Location Identifier	Region	Airport Name	City, State
CNO	AWP	CHINO	CHINO, CA
CNW	ASW	TSTC WACO	WACO, TX
COU	ACE	COLUMBIA RGNL	COLUMBIA, MO
CPR	ANM	CASPER/NATRONA COUNTY INTL	CASPER, WY
CPS	AGL	ST LOUIS DOWNTOWN	CAHOKIA/ST LOUIS, IL
CRE	ASO	GRAND STRAND	NORTH MYRTLE BEACH, SC
CRG	ASO	JACKSONVILLE EXECUTIVE AT CRAIG	JACKSONVILLE, FL
CRP	ASW	CORPUS CHRISTI INTL	CORPUS CHRISTI, TX
CRQ	AWP	MC CLELLAN-PALOMAR	CARLSBAD, CA
CRW	AEA	YEAGER	CHARLESTON, WV
CSG	ASO	COLUMBUS	COLUMBUS, GA
CWA	AGL	CENTRAL WISCONSIN	MOSINEE, WI
CWF	ASW	CHENNAULT INTL	LAKE CHARLES, LA
CXO	ASW	CONROE-NORTH HOUSTON RGNL	HOUSTON, TX
CXY	AEA	CAPITAL CITY	HARRISBURG, PA
CYS	ANM	CHEYENNE RGNL/JERRY OLSON FIELD	CHEYENNE, WY
DAB	ASO	DAYTONA BEACH INTL	DAYTONA BEACH, FL
DBQ	ACE	DUBUQUE RGNL	DUBUQUE, IA
DEC	AGL	DECATUR	DECATUR, IL
DET	AGL	COLEMAN A YOUNG MUNI	DETROIT, MI
DHN	ASO	DOTHAN RGNL	DOTHAN, AL
DLH	AGL	DULUTH INTL	DULUTH, MN
DPA	AGL	DUPAGE	CHICAGO/WEST CHICAGO, IL
DTN	ASW	SHREVEPORT DOWNTOWN	SHREVEPORT, LA
DTO	ASW	DENTON ENTERPRISE	DENTON, TX
DTS	ASO	DESTIN EXECUTIVE	DESTIN, FL
DVT	AWP	PHOENIX DEER VALLEY	PHOENIX, AZ
DWH	ASW	DAVID WAYNE HOOKS MEMORIAL	HOUSTON, TX
DXR	ANE	DANBURY MUNI	DANBURY, CT
EAU	AGL	CHIPPEWA VALLEY RGNL	EAU CLAIRE, WI
EGE	ANM	EAGLE COUNTY RGNL	EAGLE, CO
ELM	AEA	ELMIRA/CORNING RGNL	ELMIRA/CORNING, NY
EMT	AWP	SAN GABRIEL VALLEY	EL MONTE, CA
ENA	AAL	KENAI MUNI	KENAI, AK
ENW	AGL	KENOSHA RGNL	KENOSHA, WI
ERI	AEA	ERIE INTL/TOM RIDGE FIELD	ERIE, PA
ESN	AEA	EASTON/NEWNAM FIELD	EASTON, MD
EVB	ASO	NEW SMYRNA BEACH MUNI	NEW SMYRNA BEACH, FL
EVV	AGL	EVANSVILLE RGNL	EVANSVILLE, IN
EWB	ANE	NEW BEDFORD RGNL	NEW BEDFORD, MA
EWN	ASO	COASTAL CAROLINA REGIONAL	NEW BERN, NC
EYW	ASO	KEY WEST INTL	KEY WEST, FL
FAR	AGL	HECTOR INTL	FARGO, ND
FAY	ASO	FAYETTEVILLE RGNL/GRANNIS FIELD	FAYETTEVILLE, NC
FCM	AGL	FLYING CLOUD	MINNEAPOLIS, MN
FDK	AEA	FREDERICK MUNI	FREDERICK, MD
FFZ	AWP	FALCON FLD	MESA, AZ
FIN	ASO	FLAGLER EXECUTIVE	PALM COAST, FL
FLG	AWP	FLAGSTAFF PULLIAM	FLAGSTAFF, AZ
FLO	ASO	FLORENCE RGNL	FLORENCE, SC
FMN	ASW	FOUR CORNERS RGNL	FARMINGTON, NM
FMY	ASO	PAGE FIELD	FORT MYERS, FL
FNT	AGL	BISHOP INTL	FLINT, MI
FOE	ACE	TOPEKA RGNL	TOPEKA, KS
FOK	AEA	FRANCIS S GABRESKI	WESTHAMPTON BEACH, NY
FPR	ASO	TREASURE COAST INTL	FORT PIERCE, FL
FRG	AEA	REPUBLIC	FARMINGDALE, NY
FSM	ASW	FORT SMITH RGNL	FORT SMITH, AR
FTG	ANM	FRONT RANGE	DENVER, CO
FTW	ASW	FORT WORTH MEACHAM INTL	FORT WORTH, TX
FTY	ASO	FULTON COUNTY AIRPORT-BROWN FIELD	ATLANTA, GA
FUL	AWP	FULLERTON MUNI	FULLERTON, CA
FWA	AGL	FORT WAYNE INTL	FORT WAYNE, IN
FWS	ASW	FORT WORTH SPINKS	FORT WORTH, TX
FXE	ASO	FORT LAUDERDALE EXECUTIVE	FORT LAUDERDALE, FL
FYV	ASW	DRAKE FIELD	FAYETTEVILLE, AR
GCK	ACE	GARDEN CITY RGNL	GARDEN CITY, KS
GCN	AWP	GRAND CANYON NATIONAL PARK	GRAND CANYON, AZ
GEU	AWP	GLENDALE MUNI	GLENDALE, AZ
GFK	AGL	GRAND FORKS INTL	GRAND FORKS, ND

Table B-4 List of Non-Hub Towers

Location Identifier	Region	Airport Name	City, State
GGG	ASW	EAST TEXAS RGNL	LONGVIEW, TX
GJT	ANM	GRAND JUNCTION REGIONAL	GRAND JUNCTION, CO
GKY	ASW	ARLINGTON MUNI	ARLINGTON, TX
GLH	ASO	GREENVILLE MID-DELTA	GREENVILLE, MS
GLS	ASW	SCHOLES INTL AT GALVESTON	GALVESTON, TX
GMU	ASO	GREENVILLE DOWNTOWN	GREENVILLE, SC
GNV	ASO	GAINESVILLE RGNL	GAINESVILLE, FL
GON	ANE	GROTON-NEW LONDON	GROTON (NEW LONDON), CT
GPI	ANM	GLACIER PARK INTL	KALISPELL, MT
GPM	ASW	GRAND PRAIRIE MUNI	GRAND PRAIRIE, TX
GPT	ASO	GULFPORT-BILOXI INTL	GULFPORT, MS
GRB	AGL	GREEN BAY-AUSTIN STRAUBEL INTL	GREEN BAY, WI
GRI	ACE	CENTRAL NEBRASKA RGNL	GRAND ISLAND, NE
GTF	ANM	GREAT FALLS INTL	GREAT FALLS, MT
GTR	ASO	GOLDEN TRIANGLE RGNL	COLUMBUS/W POINT/STARKVILLE, MS
GTU	ASW	GEORGETOWN MUNI	GEORGETOWN, TX
GYH	ASO	DONALDSON FIELD	GREENVILLE, SC
GYR	AWP	PHOENIX GOODYEAR	GOODYEAR, AZ
GY Y	AGL	GARY/CHICAGO INTL	GARY, IN
HEF	AEA	MANASSAS RGNL/HARRY P DAVIS FIELD	WASHINGTON, DC
HFD	ANE	HARTFORD-BRAINARD	HARTFORD, CT
HGR	AEA	HAGERSTOWN RGNL-RICHARD A HENSON FLD	HAGERSTOWN, MD
HHR	AWP	JACK NORTHROP FIELD/HAWTHORNE MUNI	HAWTHORNE, CA
HIO	ANM	PORTLAND-HILLSBORO	PORTLAND, OR
HKS	ASO	HAWKINS FIELD	JACKSON, MS
HKY	ASO	HICKORY RGNL	HICKORY, NC
HLG	AEA	WHEELING OHIO CO	WHEELING, WV
HLN	ANM	HELENA RGNL	HELENA, MT
HND	AWP	HENDERSON EXECUTIVE	LAS VEGAS, NV
HOB	ASW	LEA COUNTY RGNL	HOBBS, NM
HQZ	ASW	MESQUITE METRO	MESQUITE, TX
HRL	ASW	VALLEY INTL	HARLINGEN, TX
HSA	ASO	STENNIS INTL	BAY ST LOUIS, MS
HTS	AEA	TRI-STATE/MILTON J FERGUSON FIELD	HUNTINGTON, WV
HUF	AGL	TERRE HAUTE RGNL	TERRE HAUTE, IN
HUM	ASW	HOUMA-TERREBONNE	HOUMA, LA
HUT	ACE	HUTCHINSON RGNL	HUTCHINSON, KS
HVN	ANE	TWEED-NEW HAVEN	NEW HAVEN, CT
HWD	AWP	HAYWARD EXECUTIVE	HAYWARD, CA
HWO	ASO	NORTH PERRY	HOLLYWOOD, FL
HXD	ASO	HILTON HEAD	HILTON HEAD ISLAND, SC
HYA	ANE	BARNSTABLE MUNI-BOARDMAN/POLANDO FIELD	HYANNIS, MA
HYI	ASW	SAN MARCOS RGNL	AUSTIN, TX
IAG	AEA	NIAGARA FALLS INTL	NIAGARA FALLS, NY
IDA	ANM	IDAHO FALLS RGNL	IDAHO FALLS, ID
IFP	AWP	LAUGHLIN/BULLHEAD INTL	BULLHEAD CITY, AZ
ILG	AEA	NEW CASTLE	WILMINGTON, DE
INT	ASO	SMITH REYNOLDS	WINSTON SALEM, NC
IPT	AEA	WILLIAMSPORT RGNL	WILLIAMSPORT, PA
ISM	ASO	KISSIMMEE GATEWAY	ORLANDO, FL
ISO	ASO	KINSTON RGNL JETPORT AT STALLINGS FLD	KINSTON, NC
ITH	AEA	ITHACA TOMPKINS RGNL	ITHACA, NY
IXD	ACE	NEW CENTURY AIRCENTER	OLATHE, KS
JAC	ANM	JACKSON HOLE	JACKSON, WY
JEF	ACE	JEFFERSON CITY MEMORIAL	JEFFERSON CITY, MO
JLN	ACE	JOPLIN RGNL	JOPLIN, MO
JNU	AAL	JUNEAU INTL	JUNEAU, AK
JQF	ASO	CONCORD RGNL	CONCORD, NC
JRF	AWP	KALAELOA (JOHN RODGERS FIELD)	KAPOLEI, HI
JVL	AGL	SOUTHERN WISCONSIN RGNL	JANESVILLE, WI
JXN	AGL	JACKSON COUNTY-REYNOLDS FIELD	JACKSON, MI
LAF	AGL	PURDUE UNIVERSITY	LAFAYETTE, IN
LAL	ASO	LAKELAND LINDER RGNL	LAKELAND, FL
LAN	AGL	CAPITAL REGION INTL	LANSING, MI
LAW	ASW	LAWTON-FORT SILL RGNL	LAWTON, OK
LBE	AEA	ARNOLD PALMER RGNL	LATROBE, PA
LCH	ASW	LAKE CHARLES RGNL	LAKE CHARLES, LA
LEB	ANE	LEBANON MUNI	LEBANON, NH
LEE	ASO	LEESBURG INTL	LEESBURG, FL
LFT	ASW	LAFAYETTE RGNL/PAUL FOURNET FIELD	LAFAYETTE, LA

Table B-4 List of Non-Hub Towers

Location Identifier	Region	Airport Name	City, State
LMT	ANM	CRATER LAKE-KLAMATH RGNL	KLAMATH FALLS, OR
LNK	ACE	LINCOLN	LINCOLN, NE
LNS	AEA	LANCASTER	LANCASTER, PA
LOU	ASO	BOWMAN FIELD	LOUISVILLE, KY
LRD	ASW	LAREDO INTL	LAREDO, TX
LSE	AGL	LA CROSSE RGNL	LA CROSSE, WI
LUK	AGL	CINCINNATI MUNI AIRPORT LUNKEN FIELD	CINCINNATI, OH
LVK	AWP	LIVERMORE MUNI	LIVERMORE, CA
LWB	AEA	GREENBRIER VALLEY	LEWISBURG, WV
LWM	ANE	LAWRENCE MUNI	LAWRENCE, MA
LWS	ANM	LEWISTON-NEZ PERCE COUNTY	LEWISTON, ID
LYH	AEA	LYNCHBURG RGNL/PRESTON GLENN FLD	LYNCHBURG, VA
LZU	ASO	GWINNETT COUNTY - BRISCOE FIELD	LAWRENCEVILLE, GA
MBS	AGL	MBS INTL	SAGINAW, MI
MCN	ASO	MIDDLE GEORGIA RGNL	MACON, GA
MDH	AGL	SOUTHERN ILLINOIS	CARBONDALE/MURPHYSBORO, IL
MEI	ASO	KEY FIELD	MERIDIAN, MS
MER	AWP	CASTLE	ATWATER, CA
MFD	AGL	MANSFIELD LAHM RGNL	MANSFIELD, OH
MFE	ASW	MC ALLEN MILLER INTL	MC ALLEN, TX
MGM	ASO	MONTGOMERY RGNL (DANNELLY FIELD)	MONTGOMERY, AL
MGW	AEA	MORGANTOWN MUNI-WALTER L BILL HART FLD	MORGANTOWN, WV
MHK	ACE	MANHATTAN RGNL	MANHATTAN, KS
MHR	AWP	SACRAMENTO MATHER	SACRAMENTO, CA
MIC	AGL	CRYSTAL	MINNEAPOLIS, MN
MIE	AGL	DELAWARE COUNTY RGNL	MUNCIE, IN
MKC	ACE	CHARLES B WHEELER DOWNTOWN	KANSAS CITY, MO
MKG	AGL	MUSKEGON COUNTY	MUSKEGON, MI
MKK	AWP	MOLOKAI	KAUNAKAKAI, HI
MKL	ASO	MC KELLAR-SIPES RGNL	JACKSON, TN
MLB	ASO	MELBOURNE INTL	MELBOURNE, FL
MLI	AGL	QUAD CITY INTL	MOLINE, IL
MLU	ASW	MONROE RGNL	MONROE, LA
MMU	AEA	MORRISTOWN MUNI	MORRISTOWN, NJ
MOB	ASO	MOBILE RGNL	MOBILE, AL
MOD	AWP	MODESTO CITY-CO-HARRY SHAM FLD	MODESTO, CA
MOT	AGL	MINOT INTL	MINOT, ND
MQY	ASO	SMYRNA	SMYRNA, TN
MRI	AAL	MERRILL FIELD	ANCHORAGE, AK
MRY	AWP	MONTEREY RGNL	MONTEREY, CA
MSO	ANM	MISSOULA INTL	MISSOULA, MT
MTN	AEA	MARTIN STATE	BALTIMORE, MD
MVY	ANE	MARTHA'S VINEYARD	VINEYARD HAVEN, MA
MWA	AGL	VETERANS AIRPORT OF SOUTHERN ILLINOIS	MARION, IL
MWC	AGL	LAWRENCE J TIMMERMAN	MILWAUKEE, WI
MWH	ANM	GRANT CO INTL	MOSES LAKE, WA
MYF	AWP	MONTGOMERY-GIBBS EXECUTIVE	SAN DIEGO, CA
NEW	ASW	LAKEFRONT	NEW ORLEANS, LA
NQA	ASO	MILLINGTON RGNL JETPORT	MILLINGTON , TN
OCF	ASO	OCALA INTL-JIM TAYLOR FIELD	OCALA, FL
OGD	ANM	OGDEN-HINCKLEY	OGDEN, UT
OJC	ACE	JOHNSON COUNTY EXECUTIVE	OLATHE, KS
OLM	ANM	OLYMPIA RGNL	OLYMPIA, WA
OLV	ASO	OLIVE BRANCH	OLIVE BRANCH, MS
OMN	ASO	ORMOND BEACH MUNI	ORMOND BEACH, FL
OPF	ASO	MIAMI-OPA LOCKA EXECUTIVE	MIAMI, FL
ORH	ANE	WORCESTER RGNL	WORCESTER, MA
ORL	ASO	EXECUTIVE	ORLANDO, FL
OSH	AGL	WITTMAN RGNL	OSHKOSH, WI
OSU	AGL	OHIO STATE UNIVERSITY	COLUMBUS, OH
OTH	ANM	SOUTHWEST OREGON RGNL	NORTH BEND, OR
OUN	ASW	UNIVERSITY OF OKLAHOMA WESTHEIMER	NORMAN, OK
OWB	ASO	OWENSBORO-DAVIESS COUNTY RGNL	OWENSBORO, KY
OWD	ANE	NORWOOD MEMORIAL	NORWOOD, MA
OXC	ANE	WATERBURY-OXFORD	OXFORD, CT
OXR	AWP	OXNARD	OXNARD, CA
PAE	ANM	SNOHOMISH COUNTY (PAINE FLD)	EVERETT, WA
PAH	ASO	BARKLEY RGNL	PADUCAH, KY
PAO	AWP	PALO ALTO	PALO ALTO, CA
PDK	ASO	DEKALB-PEACHTREE	ATLANTA, GA

Table B-4 List of Non-Hub Towers

Location Identifier	Region	Airport Name	City, State
PDT	ANM	EASTERN OREGON RGNL AT PENDLETON	PENDLETON, OR
PHF	AEA	NEWPORT NEWS/WILLIAMSBURG INTL	NEWPORT NEWS, VA
PIA	AGL	GENERAL DOWNING - PEORIA INTL	PEORIA, IL
PIH	ANM	POCATELLO RGNL	POCATELLO, ID
PKB	AEA	MID-OHIO VALLEY RGNL	PARKERSBURG, WV
PMD	AWP	PALMDALE USAF PLANT 42	PALMDALE, CA
PMP	ASO	POMPANO BEACH AIRPARK	POMPANO BEACH, FL
PNE	AEA	NORTHEAST PHILADELPHIA	PHILADELPHIA, PA
POC	AWP	BRACKETT FIELD	LA VERNE, CA
POU	AEA	HUDSON VALLEY RGNL	POUGHKEEPSIE, NY
PRC	AWP	ERNEST A LOVE FIELD	PRESCOTT, AZ
PSC	ANM	TRI-CITIES	PASCO, WA
PTK	AGL	OAKLAND COUNTY INTL	PONTIAC, MI
PUB	ANM	PUEBLO MEMORIAL	PUEBLO, CO
PVU	ANM	PROVO MUNI	PROVO, UT
PWA	ASW	WILEY POST	OKLAHOMA CITY, OK
PWK	AGL	CHICAGO EXECUTIVE	CHICAGO/PROSPECT HEIGHTS/WHEELING, IL
RAL	AWP	RIVERSIDE MUNI	RIVERSIDE, CA
RAP	AGL	RAPID CITY RGNL	RAPID CITY, SD
RBD	ASW	DALLAS EXECUTIVE	DALLAS, TX
RDD	AWP	REDDING MUNI	REDDING, CA
RDG	AEA	READING RGNL/CARL A SPAATZ FIELD	READING, PA
RDM	ANM	ROBERTS FIELD	REDMOND, OR
RFD	AGL	CHICAGO/ROCKFORD INTL	CHICAGO/ROCKFORD, IL
RHV	AWP	REID-HILLVIEW OF SANTA CLARA COUNTY	SAN JOSE, CA
RME	AEA	GRIFFISS INTL	ROME, NY
RNM	AWP	RAMONA	RAMONA, CA
RNT	ANM	RENTON MUNI	RENTON, WA
ROA	AEA	ROANOKE-BLACKSBURG RGNL/WOODRUM FIELD	ROANOKE, VA
ROG	ASW	ROGERS EXECUTIVE - CARTER FIELD	ROGERS, AR
ROW	ASW	ROSWELL INTL AIR CENTER	ROSWELL, NM
RST	AGL	ROCHESTER INTL	ROCHESTER, MN
RVS	ASW	RICHARD LLOYD JONES JR	TULSA, OK
RYN	AWP	RYAN FIELD	TUCSON, AZ
RYY	ASO	COBB COUNTY INTL-MCCOLLUM FIELD	ATLANTA, GA
SAC	AWP	SACRAMENTO EXECUTIVE	SACRAMENTO, CA
SAF	ASW	SANTA FE MUNI	SANTA FE, NM
SAW	AGL	SAWYER INTL	MARQUETTE, MI
SBA	AWP	SANTA BARBARA MUNI	SANTA BARBARA, CA
SBN	AGL	SOUTH BEND INTL	SOUTH BEND, IN
SBP	AWP	SAN LUIS COUNTY RGNL	SAN LUIS OBISPO , CA
SBY	AEA	SALISBURY-OCEAN CITY WICOMICO RGNL	SALISBURY, MD
SCK	AWP	STOCKTON METROPOLITAN	STOCKTON, CA
SDL	AWP	SCOTTSDALE	SCOTTSDALE, AZ
SDM	AWP	BROWN FIELD MUNI	SAN DIEGO, CA
SEE	AWP	GILLESPIE FIELD	SAN DIEGO/EL CAJON, CA
SFF	ANM	FELTS FIELD	SPOKANE, WA
SGJ	ASO	NORTHEAST FLORIDA RGNL	ST AUGUSTINE, FL
SGR	ASW	SUGAR LAND RGNL	HOUSTON, TX
SHV	ASW	SHREVEPORT RGNL	SHREVEPORT, LA
SIG	ASO	FERNANDO LUIS RIBAS DOMINICCI	SAN JUAN, PR
SJT	ASW	SAN ANGELO RGNL/MATHIS FIELD	SAN ANGELO, TX
SLE	ANM	MCNARY FLD	SALEM, OR
SLN	ACE	SALINA RGNL	SALINA, KS
SMO	AWP	SANTA MONICA MUNI	SANTA MONICA, CA
SMX	AWP	SANTA MARIA PUB/CAPT G ALLAN HANCOCK FLD	SANTA MARIA, CA
SNS	AWP	SALINAS MUNI	SALINAS, CA
SPG	ASO	ALBERT WHITTED	ST PETERSBURG, FL
SPI	AGL	ABRAHAM LINCOLN CAPITAL	SPRINGFIELD, IL
SQL	AWP	SAN CARLOS	SAN CARLOS, CA
SSF	ASW	STINSON MUNI	SAN ANTONIO, TX
STC	AGL	ST CLOUD RGNL	ST CLOUD, MN
STJ	ACE	ROSECRANS MEMORIAL	ST JOSEPH, MO
STP	AGL	ST PAUL DOWNTOWN HOLMAN FLD	ST PAUL, MN
STS	AWP	CHARLES M SCHULZ - SONOMA COUNTY	SANTA ROSA, CA
STX	ASO	HENRY E ROHLSSEN	CHRISTIANSTED, VI
SUA	ASO	WITHAM FIELD	STUART, FL
SUN	ANM	FRIEDMAN MEMORIAL	HAILEY, ID
SUS	ACE	SPIRIT OF ST LOUIS	ST LOUIS, MO
SUX	ACE	SIOUX GATEWAY/COL BUD DAY FIELD	SIOUX CITY, IA

Table B-4 List of Non-Hub Towers

Location Identifier	Region	Airport Name	City, State
SWF	AEA	STEWART INTL	NEW YORK , NY
SWO	ASW	STILLWATER RGNL	STILLWATER, OK
TCL	ASO	TUSCALOOSA RGNL	TUSCALOOSA, AL
TEB	AEA	TETERBORO	TETERBORO, NJ
TIW	ANM	TACOMA NARROWS	TACOMA, WA
TIX	ASO	SPACE COAST RGNL	TITUSVILLE, FL
TKI	ASW	MCKINNEY NATIONAL	DALLAS, TX
TLH	ASO	TALLAHASSEE INTL	TALLAHASSEE, FL
TMB	ASO	MIAMI EXECUTIVE	MIAMI, FL
TOA	AWP	ZAMPERINI FIELD	TORRANCE, CA
TOL	AGL	TOLEDO EXPRESS	TOLEDO, OH
TOP	ACE	PHILIP BILLARD MUNI	TOPEKA, KS
TRI	ASO	TRI-CITIES	BRISTOL/JOHNSON/KINGSPORT, TN
TTD	ANM	PORTLAND-TROUTDALE	PORTLAND, OR
TTN	AEA	TRENTON MERCER	TRENTON, NJ
TUP	ASO	TUPELO RGNL	TUPELO, MS
TVC	AGL	CHERRY CAPITAL	TRAVERSE CITY, MI
TWF	ANM	JOSLIN FIELD - MAGIC VALLEY RGNL	TWIN FALLS, ID
TXK	ASW	TEXARKANA RGNL-WEBB FIELD	TEXARKANA, AR
TYR	ASW	TYLER POUNDS RGNL	TYLER, TX
TZR	AGL	BOLTON FIELD	COLUMBUS, OH
UAO	ANM	AURORA STATE	AURORA, OR
UES	AGL	WAUKESHA COUNTY	WAUKESHA, WI
UGN	AGL	WAUKEGAN NATIONAL	CHICAGO/WAUKEGAN , IL
UNV	AEA	UNIVERSITY PARK	STATE COLLEGE, PA
VCT	ASW	VICTORIA RGNL	VICTORIA, TX
VCV	AWP	SOUTHERN CALIFORNIA LOGISTICS	VICTORVILLE, CA
VGT	AWP	NORTH LAS VEGAS	LAS VEGAS, NV
VNY	AWP	VAN NUYS	VAN NUYS, CA
VQQ	ASO	CECIL	JACKSONVILLE, FL
VRB	ASO	VERO BEACH RGNL	VERO BEACH, FL
WDG	ASW	ENID WOODRING RGNL	ENID, OK
WHP	AWP	WHITEMAN	LOS ANGELES, CA
WJF	AWP	GENERAL WM J FOX AIRFIELD	LANCASTER, CA
YIP	AGL	WILLOW RUN	DETROIT, MI
YKM	ANM	YAKIMA AIR TERMINAL/MCALLISTER FIELD	YAKIMA, WA
YNG	AGL	YOUNGSTOWN-WARREN RGNL	YOUNGSTOWN/WARREN, OH

Listed 387 Airports

Table B-5 List of FAA Contract Towers

Location Identifier	Region	Airport Name	City, State
ABY	ASO	SOUTHWEST GEORGIA RGNL	ALBANY, GA
ADM	ASW	ARDMORE MUNI	ARDMORE, OK
ADQ	AAL	KODIAK	KODIAK, AK
AEG	ASW	DOUBLE EAGLE II	ALBUQUERQUE, NM
AEX	ASW	ALEXANDRIA INTL	ALEXANDRIA, LA
AHN	ASO	ATHENS/BEN EPPS	ATHENS, GA
AKN	AAL	KING SALMON	KING SALMON, AK
ALN	AGL	ST LOUIS RGNL	ALTON/ST LOUIS, IL
ALW	ANM	WALLA WALLA RGNL	WALLA WALLA, WA
ANE	AGL	ANOKA COUNTY-BLAINE (JANES FIELD)	MINNEAPOLIS, MN
APF	ASO	NAPLES MUNI	NAPLES, FL
ARA	ASW	ACADIANA RGNL	NEW IBERIA, LA
ASG	ASW	SPRINGDALE MUNI	SPRINGDALE, AR
ASH	ANE	BOIRE FIELD	NASHUA, NH
ATW	AGL	APPLETON INTL	APPLETON, WI
BAF	ANE	WESTFIELD-BARNES RGNL	WESTFIELD/SPRINGFIELD, MA
BAK	AGL	COLUMBUS MUNI	COLUMBUS, IN
BAZ	ASW	NEW BRAUNFELS RGNL	NEW BRAUNFELS, TX
BBG	ACE	BRANSON	BRANSON, MO
BCT	ASO	BOCA RATON	BOCA RATON, FL
BDR	ANE	IGOR I SIKORSKY MEMORIAL	BRIDGEPORT, CT
BET	AAL	BETHEL	BETHEL, AK
BFM	ASO	MOBILE DOWNTOWN	MOBILE, AL
BKL	AGL	BURKE LAKEFRONT	CLEVELAND, OH
BKV	ASO	BROOKSVILLE-TAMPA BAY RGNL	BROOKSVILLE, FL
BLI	ANM	BELLINGHAM INTL	BELLINGHAM, WA
BMG	AGL	MONROE COUNTY	BLOOMINGTON, IN
BMI	AGL	CENTRAL IL RGNL ARPT AT BLOOMINGTON-NORMAL	BLOOMINGTON/NORMAL, IL
BQN	ASO	RAFAEL HERNANDEZ	AGUADILLA, PR
BRO	ASW	BROWNSVILLE/SOUTH PADRE ISLAND INTL	BROWNSVILLE, TX
BTL	AGL	W K KELLOGG	BATTLE CREEK, MI
BVY	ANE	BEVERLY RGNL	BEVERLY, MA
BZN	ANM	BOZEMAN YELLOWSTONE INTL	BOZEMAN, MT
CGF	AGL	CUYAHOGA COUNTY	CLEVELAND, OH
CHD	AWP	CHANDLER MUNI	CHANDLER, AZ
CHO	AEA	CHARLOTTESVILLE-ALBEMARLE	CHARLOTTESVILLE, VA
CIC	AWP	CHICO MUNI	CHICO, CA
CLL	ASW	EASTERWOOD FIELD	COLLEGE STATION, TX
CNW	ASW	TSTC WACO	WACO, TX
COU	ACE	COLUMBIA RGNL	COLUMBIA, MO
CRE	ASO	GRAND STRAND	NORTH MYRTLE BEACH, SC
CRG	ASO	JACKSONVILLE EXECUTIVE AT CRAIG	JACKSONVILLE, FL
CWA	AGL	CENTRAL WISCONSIN	MOSINEE, WI
CWF	ASW	CHENNAULT INTL	LAKE CHARLES, LA
CXO	ASW	CONROE-NORTH HOUSTON RGNL	HOUSTON, TX
CXY	AEA	CAPITAL CITY	HARRISBURG, PA
CYS	ANM	CHEYENNE RGNL/JERRY OLSON FIELD	CHEYENNE, WY
DBQ	ACE	DUBUQUE RGNL	DUBUQUE, IA
DEC	AGL	DECATUR	DECATUR, IL
DET	AGL	COLEMAN A YOUNG MUNI	DETROIT, MI
DHN	ASO	DOTHAN RGNL	DOTHAN, AL
DTN	ASW	SHREVEPORT DOWNTOWN	SHREVEPORT, LA
DTO	ASW	DENTON ENTERPRISE	DENTON, TX
DTS	ASO	DESTIN EXECUTIVE	DESTIN, FL
DXR	ANE	DANBURY MUNI	DANBURY, CT
EAU	AGL	CHIPPEWA VALLEY RGNL	EAU CLAIRE, WI
ECP	ASO	NORTHWEST FLORIDA BEACHES INTL	PANAMA CITY, FL
EGE	ANM	EAGLE COUNTY RGNL	EAGLE, CO
ENA	AAL	KENAI MUNI	KENAI, AK
ENW	AGL	KENOSHA RGNL	KENOSHA, WI
ESN	AEA	EASTON/NEWNAM FIELD	EASTON, MD
EVB	ASO	NEW SMYRNA BEACH MUNI	NEW SMYRNA BEACH, FL
EWB	ANE	NEW BEDFORD RGNL	NEW BEDFORD, MA
EWN	ASO	COASTAL CAROLINA REGIONAL	NEW BERN, NC
EYW	ASO	KEY WEST INTL	KEY WEST, FL
FDK	AEA	FREDERICK MUNI	FREDERICK, MD
FIN	ASO	FLAGLER EXECUTIVE	PALM COAST, FL
FLG	AWP	FLAGSTAFF PULLIAM	FLAGSTAFF, AZ
FMN	ASW	FOUR CORNERS RGNL	FARMINGTON, NM
FMY	ASO	PAGE FIELD	FORT MYERS, FL

Table B-5 List of FAA Contract Towers

Location Identifier	Region	Airport Name	City, State
FOE	ACE	TOPEKA RGNL	TOPEKA, KS
FOK	AEA	FRANCIS S GABRESKI	WESTHAMPTON BEACH, NY
FTG	ANM	FRONT RANGE	DENVER, CO
FTY	ASO	FULTON COUNTY AIRPORT-BROWN FIELD	ATLANTA, GA
FUL	AWP	FULLERTON MUNI	FULLERTON, CA
FWS	ASW	FORT WORTH SPINKS	FORT WORTH, TX
FYV	ASW	DRAKE FIELD	FAYETTEVILLE, AR
GCK	ACE	GARDEN CITY RGNL	GARDEN CITY, KS
GEU	AWP	GLENDALE MUNI	GLENDALE, AZ
GJT	ANM	GRAND JUNCTION REGIONAL	GRAND JUNCTION, CO
GKY	ASW	ARLINGTON MUNI	ARLINGTON, TX
GLH	ASO	GREENVILLE MID-DELTA	GREENVILLE, MS
GLS	ASW	SCHOLES INTL AT GALVESTON	GALVESTON, TX
GMU	ASO	GREENVILLE DOWNTOWN	GREENVILLE, SC
GNV	ASO	GAINESVILLE RGNL	GAINESVILLE, FL
GON	ANE	GROTON-NEW LONDON	GROTON (NEW LONDON), CT
GPI	ANM	GLACIER PARK INTL	KALISPELL, MT
GPM	ASW	GRAND PRAIRIE MUNI	GRAND PRAIRIE, TX
GRI	ACE	CENTRAL NEBRASKA RGNL	GRAND ISLAND, NE
GSN	AWP	FRANCISCO C ADA/SAIPAN INTL	SAIPAN ISLAND, CQ
GTR	ASO	GOLDEN TRIANGLE RGNL	COLUMBUS/W POINT/STARKVILLE, MS
GTU	ASW	GEORGETOWN MUNI	GEORGETOWN, TX
GUM	AWP	GUAM INTL	GUAM, GU
GYH	ASO	DONALDSON FIELD	GREENVILLE, SC
GYR	AWP	PHOENIX GOODYEAR	GOODYEAR, AZ
GYI	AGL	GARY/CHICAGO INTL	GARY, IN
HFD	ANE	HARTFORD-BRAINARD	HARTFORD, CT
HGR	AEA	HAGERSTOWN RGNL-RICHARD A HENSON FLD	HAGERSTOWN, MD
HHR	AWP	JACK NORTHROP FIELD/HAWTHORNE MUNI	HAWTHORNE, CA
HKS	ASO	HAWKINS FIELD	JACKSON, MS
HKY	ASO	HICKORY RGNL	HICKORY, NC
HLG	AEA	WHEELING OHIO CO	WHEELING, WV
HND	AWP	HENDERSON EXECUTIVE	LAS VEGAS, NV
HOB	ASW	LEA COUNTY RGNL	HOBBS, NM
HQZ	ASW	MESQUITE METRO	MESQUITE, TX
HRL	ASW	VALLEY INTL	HARLINGEN, TX
HSA	ASO	STENNIS INTL	BAY ST LOUIS, MS
HUM	ASW	HOUMA-TERREBONNE	HOUMA, LA
HUT	ACE	HUTCHINSON RGNL	HUTCHINSON, KS
HVN	ANE	TWEED-NEW HAVEN	NEW HAVEN, CT
HWO	ASO	NORTH PERRY	HOLLYWOOD, FL
HXD	ASO	HILTON HEAD	HILTON HEAD ISLAND, SC
HYA	ANE	BARNSTABLE MUNI-BOARDMAN/POLANDO FIELD	HYANNIS, MA
HYI	ASW	SAN MARCOS RGNL	AUSTIN, TX
IAG	AEA	NIAGARA FALLS INTL	NIAGARA FALLS, NY
IDA	ANM	IDAHO FALLS RGNL	IDAHO FALLS, ID
IFP	AWP	LAUGHLIN/BULLHEAD INTL	BULLHEAD CITY, AZ
INT	ASO	SMITH REYNOLDS	WINSTON SALEM, NC
IPT	AEA	WILLIAMSPORT RGNL	WILLIAMSPORT, PA
ISM	ASO	KISSIMMEE GATEWAY	ORLANDO, FL
ISO	ASO	KINSTON RGNL JETPORT AT STALLINGS FLD	KINSTON, NC
ITH	AEA	ITHACA TOMPKINS RGNL	ITHACA, NY
IWA	AWP	PHOENIX-MESA GATEWAY	PHOENIX, AZ
IXD	ACE	NEW CENTURY AIRCENTER	OLATHE, KS
JAC	ANM	JACKSON HOLE	JACKSON, WY
JEF	ACE	JEFFERSON CITY MEMORIAL	JEFFERSON CITY, MO
JLN	ACE	JOPLIN RGNL	JOPLIN, MO
JQF	ASO	CONCORD RGNL	CONCORD, NC
JRF	AWP	KALAELOA (JOHN RODGERS FIELD)	KAPOLEI, HI
JVL	AGL	SOUTHERN WISCONSIN RGNL	JANESVILLE, WI
JXN	AGL	JACKSON COUNTY-REYNOLDS FIELD	JACKSON, MI
KOA	AWP	ELLISON ONIZUKA KONA INTL AT KEAHOLE	KAILUA/KONA, HI
LAL	ASO	LAKELAND LINDER RGNL	LAKELAND, FL
LAW	ASW	LAWTON-FORT SILL RGNL	LAWTON, OK
LBE	AEA	ARNOLD PALMER RGNL	LATROBE, PA
LEB	ANE	LEBANON MUNI	LEBANON, NH
LEE	ASO	LEESBURG INTL	LEESBURG, FL
LIH	AWP	LIHUE	LIHUE, HI
LMT	ANM	CRATER LAKE-KLAMATH RGNL	KLAMATH FALLS, OR
LNS	AEA	LANCASTER	LANCASTER, PA

Table B-5 List of FAA Contract Towers

Location Identifier	Region	Airport Name	City, State
LRD	ASW	LAREDO INTL	LAREDO, TX
LSE	AGL	LA CROSSE RGNL	LA CROSSE, WI
LUK	AGL	CINCINNATI MUNI AIRPORT LUNKEN FIELD	CINCINNATI, OH
LWB	AEA	GREENBRIER VALLEY	LEWISBURG, WV
LWM	ANE	LAWRENCE MUNI	LAWRENCE, MA
LWS	ANM	LEWISTON-NEZ PERCE COUNTY	LEWISTON, ID
LYH	AEA	LYNCHBURG RGNL/PRESTON GLENN FLD	LYNCHBURG, VA
LZU	ASO	GWINNETT COUNTY - BRISCOE FIELD	LAWRENCEVILLE, GA
MCN	ASO	MIDDLE GEORGIA RGNL	MACON, GA
MDH	AGL	SOUTHERN ILLINOIS	CARBONDALE/MURPHYSBORO, IL
MEI	ASO	KEY FIELD	MERIDIAN, MS
MER	AWP	CASTLE	ATWATER, CA
MFE	ASW	MC ALLEN MILLER INTL	MC ALLEN, TX
MFR	ANM	ROGUE VALLEY INTL - MEDFORD	MEDFORD, OR
MGW	AEA	MORGANTOWN MUNI-WALTER L BILL HART FLD	MORGANTOWN, WV
MHK	ACE	MANHATTAN RGNL	MANHATTAN, KS
MHR	AWP	SACRAMENTO MATHER	SACRAMENTO, CA
MIE	AGL	DELAWARE COUNTY RGNL	MUNCIE, IN
MKK	AWP	MOLOKAI	KAUNAKAKAI, HI
MKL	ASO	MC KELLAR-SIPES RGNL	JACKSON, TN
MLB	ASO	MELBOURNE INTL	MELBOURNE, FL
MOD	AWP	MODESTO CITY-CO-HARRY SHAM FLD	MODESTO, CA
MOT	AGL	MINOT INTL	MINOT, ND
MQY	ASO	SMYRNA	SMYRNA, TN
MSO	ANM	MISSOULA INTL	MISSOULA, MT
MTN	AEA	MARTIN STATE	BALTIMORE, MD
MVY	ANE	MARTHA'S VINEYARD	VINEYARD HAVEN, MA
MWA	AGL	VETERANS AIRPORT OF SOUTHERN ILLINOIS	MARION, IL
MWC	AGL	LAWRENCE J TIMMERMAN	MILWAUKEE, WI
NQA	ASO	MILLINGTON RGNL JETPORT	MILLINGTON , TN
OCF	ASO	OCALA INTL-JIM TAYLOR FIELD	OCALA, FL
OGD	ANM	OGDEN-HINCKLEY	OGDEN, UT
OJC	ACE	JOHNSON COUNTY EXECUTIVE	OLATHE, KS
OLM	ANM	OLYMPIA RGNL	OLYMPIA, WA
OLV	ASO	OLIVE BRANCH	OLIVE BRANCH, MS
OMN	ASO	ORMOND BEACH MUNI	ORMOND BEACH, FL
OPF	ASO	MIAMI-OPA LOCKA EXECUTIVE	MIAMI, FL
ORH	ANE	WORCESTER RGNL	WORCESTER, MA
OSH	AGL	WITTMAN RGNL	OSHKOSH, WI
OSU	AGL	OHIO STATE UNIVERSITY	COLUMBUS, OH
OTH	ANM	SOUTHWEST OREGON RGNL	NORTH BEND, OR
OUN	ASW	UNIVERSITY OF OKLAHOMA WESTHEIMER	NORMAN, OK
OWB	ASO	OWENSBORO-DAVISS COUNTY RGNL	OWENSBORO, KY
OWD	ANE	NORWOOD MEMORIAL	NORWOOD, MA
OXC	ANE	WATERBURY-OXFORD	OXFORD, CT
OXR	AWP	OXNARD	OXNARD, CA
PAH	ASO	BARKLEY RGNL	PADUCAH, KY
PDT	ANM	EASTERN OREGON RGNL AT PENDLETON	PENDLETON, OR
PGD	ASO	PUNTA GORDA	PUNTA GORDA, FL
PIH	ANM	POCATELLO RGNL	POCATELLO, ID
PKB	AEA	MID-OHIO VALLEY RGNL	PARKERSBURG, WV
PMD	AWP	PALMDALE USAF PLANT 42	PALMDALE, CA
PMP	ASO	POMPANO BEACH AIRPARK	POMPANO BEACH, FL
PVU	ANM	PROVO MUNI	PROVO, UT
PWA	ASW	WILEY POST	OKLAHOMA CITY, OK
RAL	AWP	RIVERSIDE MUNI	RIVERSIDE, CA
RAP	AGL	RAPID CITY RGNL	RAPID CITY, SD
RBD	ASW	DALLAS EXECUTIVE	DALLAS, TX
RDD	AWP	REDDING MUNI	REDDING, CA
RDM	ANM	ROBERTS FIELD	REDMOND, OR
RME	AEA	GRIFFISS INTL	ROME, NY
RNM	AWP	RAMONA	RAMONA, CA
RNT	ANM	RENTON MUNI	RENTON, WA
ROG	ASW	ROGERS EXECUTIVE - CARTER FIELD	ROGERS, AR
RYN	AWP	RYAN FIELD	TUCSON, AZ
RYY	ASO	COBB COUNTY INTL-MCCOLLUM FIELD	ATLANTA, GA
SAC	AWP	SACRAMENTO EXECUTIVE	SACRAMENTO, CA
SAF	ASW	SANTA FE MUNI	SANTA FE, NM
SAW	AGL	SAWYER INTL	MARQUETTE, MI
SBP	AWP	SAN LUIS COUNTY RGNL	SAN LUIS OBISPO , CA

Table B-5 List of FAA Contract Towers

Location Identifier	Region	Airport Name	City, State
SBY	AEA	SALISBURY-OCEAN CITY WICOMICO RGNL	SALISBURY, MD
SDM	AWP	BROWN FIELD MUNI	SAN DIEGO, CA
SFF	ANM	FELTS FIELD	SPOKANE, WA
SGJ	ASO	NORTHEAST FLORIDA RGNL	ST AUGUSTINE, FL
SGR	ASW	SUGAR LAND RGNL	HOUSTON, TX
SIG	ASO	FERNANDO LUIS RIBAS DOMINICCI	SAN JUAN, PR
SJT	ASW	SAN ANGELO RGNL/MATHIS FIELD	SAN ANGELO, TX
SLE	ANM	MCNARY FLD	SALEM, OR
SLN	ACE	SALINA RGNL	SALINA, KS
SMX	AWP	SANTA MARIA PUB/CAPT G ALLAN HANCOCK FLD	SANTA MARIA, CA
SNS	AWP	SALINAS MUNI	SALINAS, CA
SPG	ASO	ALBERT WHITTED	ST PETERSBURG, FL
SQL	AWP	SAN CARLOS	SAN CARLOS, CA
SSF	ASW	STINSON MUNI	SAN ANTONIO, TX
STC	AGL	ST CLOUD RGNL	ST CLOUD, MN
STJ	ACE	ROSECRANS MEMORIAL	ST JOSEPH, MO
STX	ASO	HENRY E ROHLSEN	CHRISTIANSTED, VI
SUA	ASO	WITHAM FIELD	STUART, FL
SUN	ANM	FRIEDMAN MEMORIAL	HAILEY, ID
SWF	AEA	STEWART INTL	NEW YORK , NY
SWO	ASW	STILLWATER RGNL	STILLWATER, OK
TCL	ASO	TUSCALOOSA RGNL	TUSCALOOSA, AL
TIW	ANM	TACOMA NARROWS	TACOMA, WA
TIX	ASO	SPACE COAST RGNL	TITUSVILLE, FL
TKI	ASW	MCKINNEY NATIONAL	DALLAS, TX
TOP	ACE	PHILIP BILLARD MUNI	TOPEKA, KS
TTD	ANM	PORTLAND-TROUTDALE	PORTLAND, OR
TTN	AEA	TRENTON MERCER	TRENTON, NJ
TUP	ASO	TUPELO RGNL	TUPELO, MS
TXK	ASW	TEXARKANA RGNL-WEBB FIELD	TEXARKANA, AR
TYR	ASW	TYLER POUNDS RGNL	TYLER, TX
TZR	AGL	BOLTON FIELD	COLUMBUS, OH
UAO	ANM	AURORA STATE	AURORA, OR
UES	AGL	WAUKESHA COUNTY	WAUKESHA, WI
UGN	AGL	WAUKEGAN NATIONAL	CHICAGO/WAUKEGAN , IL
UNV	AEA	UNIVERSITY PARK	STATE COLLEGE, PA
VCT	ASW	VICTORIA RGNL	VICTORIA, TX
VCV	AWP	SOUTHERN CALIFORNIA LOGISTICS	VICTORVILLE, CA
VQQ	ASO	CECIL	JACKSONVILLE, FL
WDG	ASW	ENID WOODRING RGNL	ENID, OK
WHP	AWP	WHITEMAN	LOS ANGELES, CA
WJF	AWP	GENERAL WM J FOX AIRFIELD	LANCASTER, CA
XNA	ASW	NORTHWEST ARKANSAS RGNL	FAYETTEVILLE/SPRINGDALE/ROGERS , AR
YKM	ANM	YAKIMA AIR TERMINAL/MCALLISTER FIELD	YAKIMA, WA

Listed 254 Airports