



Federal Aviation
Administration

Terminal Area Forecast Summary

Fiscal Years 2016-2045



Preface

This publication provides aviation data users with summary historical and forecast statistics on passenger demand and aviation activity at U.S. airports. The summary level forecasts are based on individual airport projections.

The Terminal Area Forecast (TAF) includes forecasts for active airports in the National Plan of Integrated Airport Systems (NPIAS). The Federal Aviation Administration's (FAA) Forecast and Performance Analysis Division, Office of Aviation Policy and Plans, develops the TAF. As its primary input, the TAF initially used the national forecasts of aviation activity contained in FAA Aerospace Forecasts, Fiscal Years 2016-2036. The final TAF considers the forecasts and assumptions contained in FAA Aerospace Forecasts, Fiscal Years 2017-2037. Beginning March, 2017 the tables for the national forecasts can be found at:

http://www.faa.gov/data_research/aviation/aerospace_forecasts/

The TAF is available on the Internet. The TAF model and TAF database can be accessed at:

http://www.faa.gov/data_research/aviation/taf

The TAF model allows users to create their own forecast scenarios. It contains a query data application that allows the public to access and print historical (1990 to 2015) and forecast (2016 to 2045) aviation activity data by individual airport, state, or FAA region.

The FAA welcomes public comment on the forecasts, as well as suggestions for improving the usefulness of the TAF.

Roger Schaufele, Jr.
Manager
Forecast and Performance Analysis Division
Office of Aviation Policy and Plans

Acknowledgements

This document was prepared by the Forecast and Performance Analysis Division of the FAA Office of Aviation Policy and Plans under the direction of Roger Schaufele, Manager, and Michael Lukacs, Deputy Division Manager, Forecast and Performance Analysis Division. The forecasts were prepared by Peter LeBoff, Dipasis Bhadra, Li Ding, Chia-Mei Liu, Anna Barlett, and Gary Mihalik.

The software support was provided under contract by IT WORKS! Software. We extend a special thanks to Alice Dobrin and Damien Agostinelli whose invaluable programming support for the TAF software made accessing and analyzing this airport data so much more efficient.

Special acknowledgments are made to FAA Airports staff in the Regional and Airport District Offices for their assistance in coordinating the regional reviews, state input, and forecast recommendations. The reviews and comments of the regional offices were extremely important and useful in guiding the Forecast and Performance Analysis Division in making adjustments to the preliminary version of the forecasts. Their efforts have enhanced the accuracy and credibility of the final product.

Table of Contents

Preface	i
Acknowledgements	ii
Table of Contents	iii
Summary Historical and Forecast Highlights	1
Forecast Process	3
Introduction.....	3
Forecast Method	4
Forecast Review Process	5
Data Sources	5
TAF and National Forecast Summary	7
Near-Term Forecasts	7
National Forecast Trends.....	7
Trends by Region.....	7
Large, Medium, and Small Hubs.....	8
Large Hub Airports	9
TAF and National Forecast Tables	10
Table S-1 Enplanements at Large Hub Airports (in thousands)	11
Graph S-1 Enplanements Growth Rates for the Large Hub Airports, Fiscal Years 2015-2045	12
Table S-2 Airport Operations at the Large Hub Airports (in thousands).....	13
Graph S-2 Airport Operations Growth Rates for the Large Hub Airports, Fiscal Years 2015-2045	14
Table S-3 Air Traffic Control Towers and Contract Towers by Region and State	15
Table S-4 Ranking of Top 100 FAA Towers by Total Enplanements, FY 2015	16
Table S-5 Summary of Enplanements and Airport Operations at FAA Towers and Contract Towers.	19
Table S-6 Commercial Airport Operations Summary by Region*	20
Table S-7 Itinerant Airport Operations Summary by Region*	21
Table S-8 Total Airport Operations Summary by Region*	22
Table S-9 TRACON Operations Summary by Region	23
Table S-10 Enplanements Summary by Region*	24
Table S-11 Based Aircraft Summary by Region*	25
Appendix A: Description of Activity Measures	26
Air Carrier Enplanements.....	26
Regional Enplanements	26

Aircraft Operations	26
Local Operations	27
Itinerant Operations.....	27
Tracon Operations	27
Overflights	27
Appendix B: List of FAA Towers by Hub Size and FAA Contract Towers	28
Table B-1 List of Large Hub Towers	29
Table B-2 List of Medium Hub Towers.....	30
Table B-3 List of Small Hub Towers	31
Table B-4 List of Non-Hub Towers.....	33
Table B-5 List of FAA Contract Towers	40

Summary Historical and Forecast Highlights

- A total of 786.4 million passengers were enplaned at U.S. airports in 2015; FAA and Federal contract towered airports accounted for 781.9 million enplanements.
- The top 100 air carrier airports accounted for 741.5 million enplanements in 2015, or 94 percent of total U.S. enplanements.
- FAA towers handled 35.4 million operations (takeoffs and landings) in 2015, including 19.8 million commercial aircraft operations.
- FAA contract towers handled 14.4 million operations in 2015, including 1.8 million commercial operations.
- The 30 large hub airports¹ enplaned 571.2 million passengers in 2015. These airports are projected to enplane 1.0 billion passengers in 2045, an 81.0 percent increase over the 30-year period (or 2.0 percent annually).
- The 31 medium hub airports² recorded 122.6 million enplanements in 2015. These airports are projected to enplane 221.3 million passengers in 2045, an 80.5 percent increase over the 30-year period (or 2.0 percent annually).
- Atlanta (48.4 million enplanements), Chicago O'Hare (35.7 million), Los Angeles (35.7 million), Dallas/Ft. Worth (31.4 million), and John F. Kennedy (27.4 million) led U.S. commercial airports in passenger enplanements, accounting for 22.7 percent of enplanements at U.S. airports.
- Atlanta is projected to remain the country's busiest airport, as measured by passenger enplanements, through the forecast period with a projected 86.0 million enplaned passengers in 2045. Los Angeles is projected to enplane the second most passengers (66.1 million) in 2045, followed by Chicago O'Hare with 60.1 million enplanements.
- Enplanements at Ft. Lauderdale, Las Vegas, Seattle, and Orlando airports are projected to grow fastest among the large hub airports. The annual growth rates at these airports are forecast to increase by 2.5, 2.5, 2.4 and 2.4 percent per year, respectively, over the forecast period.

¹ Airports enplaning one percent or more of total enplanements.

² Airports enplaning 0.25 to 0.99 percent of total enplanements.

- In terms of total operations, Chicago O'Hare was the busiest U.S. airport in 2015 with 881,000 aircraft operations. Atlanta and Dallas/Ft. Worth were the second and third busiest airports with 877,000 and 684,000 operations, respectively.
- In 2045, Atlanta is expected to be the busiest airport in the nation, as measured by total operations, with a projected 1.48 million operations. Los Angeles (1.15 million operations) is projected to move up to second place and Chicago O'Hare (1.15 million operations) is projected to decline to third place.
- The FAA's Southern region airports enplaned more passengers than any other region with 181.8 million passengers in 2015, or 23 percent of U.S. enplanements. The Western Pacific region was second with 162.1 million enplanements, or 21 percent of the total.
- The Southern region is expected to lead in passenger enplanements in 2045, reaching 329.0 million. The Western Pacific region is projected to stay in second place with 302.5 million enplanements.
- The Southern region led all FAA regions in the number of airport operations with 22.5 million in 2015. The Southern region is expected to remain first in 2045 with 27.1 million operations. The Western Pacific and Great Lakes regions ran second and third in airport operations in 2015 with 16.7 and 14.9 million, respectively. In 2045, the Western Pacific region is projected to remain in second place with 20.0 million operations and the Great Lakes region is projected to remain in third place with 17.2 million operations.

Forecast Process

Introduction

The Terminal Area Forecast (TAF) contains historical and forecast data for enplanements, airport operations, tracon operations, and based aircraft. The data cover 264 FAA towered airports, 253 Federal contract tower airports, 31 terminal radar approach control facilities, and 2,817 non FAA airports. Data in the TAF are presented on a U.S. Government fiscal year basis (October through September).

The TAF is available on the Internet. The TAF model and TAF database can be accessed at:

http://www.faa.gov/data_research/aviation/taf

The TAF model allows users to create their own forecast scenarios. The TAF database allows public access to historical and forecast aviation activity data by individual airport, state, or FAA region. In addition, links to the TAF from previous years are available via the address noted above.

The TAF is prepared to assist the FAA in meeting its planning, budgeting, and staffing requirements. In addition, state aviation authorities and other aviation planners use the TAF as a basis for planning airport improvements.

This document presents a set of summary tables on airport activity statistics. The airport activity data contained in the TAF consist of the following:

- **enplanements** (sum of originating and connecting passengers) for air carriers and regionals;
- **itinerant operations** for air carriers, commuters and air taxis, general aviation (GA), and military aircraft;
- **local operations** for civil and military aircraft; and
- **tracon operations** for aircraft operations under radar control.

Data on operations presented in the TAF show historical information from 1990 through 2015 and forecasts for 2016 to 2045.³ The historical enplanement information in the TAF is from 1976 through 2015 and the 2016 figures represent estimates. The enplanement forecasts are from 2017 to 2045. Appendix A provides a detailed description of the activity data elements in the TAF. Appendix B provides a list of FAA airports by hub size and a list of FAA contract towers.

³ Operations data for FAA towers and Federal contract towers for 2016 are actual.

Forecast Method

The TAF assumes a demand driven forecast for aviation services based upon local and national economic conditions as well as conditions within the aviation industry. In other words, an airport's forecast is developed independent of the ability of the airport and the air traffic control system to furnish the capacity required to meet demand. However, if the airport historically functions under constrained conditions, the FAA forecast may reflect those constraints since they are embedded in historical data. In statistical terms, the relationships between economic growth data and data representing growth in aviation activity reflect those constraints.

The forecasts of passenger enplanements and commercial operations at airports with more than 100,000 enplanements in FY 2015 are based on a bottoms-up approach. The domestic enplanements are forecast by generating origin and destination (O&D) market demand forecasts using the DB1B (quarterly 10% sample) data to model passenger flow on a quarterly basis. The O&D passenger demand forecasts are based on regression analysis using fares, regional demographics, and regional economic factors as the independent variables. The O&D forecasts are then combined with DOT T-100 segment data to generate passenger forecasts by airport pair and segment pair. The segment pair passenger forecasts are assigned to aircraft equipment in order to produce segment pair operation forecasts. The quarterly segment pair forecasts are aggregated to produce annual airport forecasts.

Separate models are used to forecast international passenger enplanements and operations and cargo operations. The international passenger enplanements are forecast on a quarterly basis using time series analysis and T-100 segment data. The segment pair passenger enplanement forecasts are used to generate segment pair operation forecasts. The cargo operation forecasts are also generated on a quarterly basis using time series analysis and T-100 segment data. The segment pair forecasts for international passenger enplanements and operations and cargo operations are aggregated to the market pair and airport level on an annual basis.

The short run (2 year) forecasts of passenger enplanements and operations for airports with more than 100,000 enplanements in FY 2015 are produced using models at the airport level. These models incorporate the use of future airline schedules.

The forecasts of passenger enplanements at FAA facilities with fewer than 100,000 enplanements in FY 2015 are based on analysis of historic trends. The commercial operations forecasts are based on the enplanement forecasts, trend analysis, and enplanements per operation. In addition the commercial forecasts for these airports may be prorated in comparison to national forecast trends by category.

Forecasts of itinerant general aviation operations and local civil operations at FAA facilities are based primarily on time series analysis. Because military operations forecasts have national security implications, the Department of Defense (DOD) provides only limited information on future aviation activity. Hence, the TAF projects military activity at its present level except when FAA has specific knowledge of a change. For instance, DOD may announce a base closing or may shift an Air Force wing from one base to another.

For non-FAA facilities, historic operations in the TAF are from the Form 5010 data. These operations levels are held constant for the forecast unless otherwise specified by a local or regional FAA official.

Forecast Review Process

Initially, FAA headquarters staff and management review forecasts for airports with more than 100,000 enplanements in FY 2015 and FAA facilities with fewer than 100,000 enplanements in FY 2015. These preliminary estimates are then submitted to FAA regional and district offices for review. Suggested changes made by the FAA regional staff are reviewed and, if determined reasonable by APO staff economists, are incorporated into the TAF. Significant increases in commercial activity forecasts are normally incorporated into the TAF only where APO receives verifiable evidence of a firm commitment by an air carrier or regional airline to initiate new service.

Summary statistics presented in the TAF differ from the national totals contained in FAA Aerospace Forecasts, Fiscal Years 2017-2037. Reasons for the differences are threefold. First, the TAF forecast methods consider airport and market specific trends. Second, the TAF and national forecast measurements vary. For example, the TAF includes facilities not serviced by the FAA in its totals. These facilities make up a large share of total general aviation operations. In addition, the TAF includes enplanements at U.S. airports only, whereas the national forecast includes enplanements on U.S. airlines at both U.S. and foreign airports. Finally, individual forecasts are not scaled to force aggregates to equal national totals.

Data Sources

The development of the TAF begins with an update of the latest historical enplanement, operation, and based aircraft statistics, using information derived from several sources. FAA's National Flight Data Center provides general airport information such as the airport name, location, and location identifier. Airport operations and tracon (radar assisted) operations data for airports with FAA and Federal contract air traffic control services are reported by FAA air traffic and Federal contract tower staff. Operations at non FAA airports are taken from FAA Form 5010 reports on aviation activity at the

airport as estimated by FAA inspectors or information provided by airport managers, state aviation activity surveys, and other sources.

U.S. domestic and international (U.S. and foreign flag carriers) enplanements are derived from the Department of Transportation's (DOT's) T-100 database. Regional carrier enplanements are derived from DOT T-100 and 298-C data.⁴

The origin and destination (O&D) data are based on the Airline Origin and Destination Survey (DB1B). This is a 10 percent sample of airline tickets from carriers reporting to the Office of Airline Information at the Bureau of Transportation Statistics.

Based aircraft data are collected by FAA inspectors, airport managers, and state aviation officials and reported on FAA Form 5010. These data show numbers of aircraft, mostly general aviation aircraft, permanently based at an airport.

⁴ In October 2002, DOT began collecting data for all airlines using the T-100 format. This change provides more detail on regional airlines, who previously reported on Form 298-C.

TAF and National Forecast Summary

Near-Term Forecasts

In 2016 total operations at FAA and contract towers increased 0.5 percent, commercial operations increased 1.6 percent, and non-commercial operations decreased 0.3 percent based on OPSNET. Total enplanements at all airports were estimated to increase 4.6 percent in 2016.

In 2017 total operations at towers are forecast to increase 0.9 percent. This forecast increase in total operations at FAA and contract towers is attributable to forecast increases in air carrier (4.2 percent), itinerant general aviation (0.2 percent), and local civil operations (0.3 percent). The forecast increase in air carrier operations (aircraft with more than 60 seats) is attributable, in part, to a shift away from air taxi/commuter operations (aircraft with 60 or fewer seats) as a result of the substitution of larger aircraft for smaller regional jets. Total enplanements at all airports are forecast to increase 4.3 percent in 2017.

National Forecast Trends

Trends at individual airports reflect to varying degrees national aviation trends as well as the dynamics at individual airports. The national forecasts for FAA and contract towered airports in FAA Aerospace Forecasts, Fiscal Years 2016-2036 show aircraft operations growing at an average annual rate of 0.9 percent over the 21-year forecast period. Average annual growth rates for this period by user group are as follows: air carrier, 2.6 percent; air taxi/commuter, -1.1 percent; itinerant general aviation, 0.3 percent; and local civil, 0.4 percent. The projected average annual rate of increase for enplanements on U.S. mainline and regional carriers from the national forecast is 2.2 percent over the 21-year forecast period.

Trends by Region

There are 264 FAA towers and 253 Federal contract towers in the TAF. California had the most FAA towers with 33, followed by Texas with 19 and Florida with 18. Regions with the most FAA towers were Southern with 51, Great Lakes with 48, and Western Pacific with 46. Table S-3 presents the number of FAA and Federal contract towers by region and state.

Tables S-6 through S-11 summarize airport operations, tracon operations, enplanements, and based aircraft by region from 2012 through 2045. The Southern (22.5 million operations), Western Pacific (16.7 million), and Great Lakes (14.9 million) regions ranked as the top three FAA regions in airport operations in 2015. Operations

for all TAF airports totaled 97.7 million. The Northwest Mountain and Eastern regions are projected to be the fastest growing FAA regions from 2015 to 2045 in terms of airport operations, increasing 37 percent and 22 percent, respectively.

The Southern region led FAA regions in passengers enplaned with 181.8 million in 2015, followed by the Western Pacific region with 162.1 million passengers. Enplanements in the Northwest Mountain region are projected to increase the most in percentage terms increasing 96 percent from 2015 to 2045. The next two regions with the fastest projected increase in enplanements are Western Pacific (87 percent) and New England (85 percent).

In 2015, there was a national total of 164,000 based aircraft. Southern (30,800 aircraft), Western Pacific (27,300), and Great Lakes (27,000) ranked as the top three FAA regions.

Large, Medium, and Small Hubs

Table S-5 presents passenger enplanements and airport operations at FAA and contract towers by hub size. An airport qualifies as a large hub with one percent or more of total U.S. passenger enplanements. A medium hub airport enplanes from 0.25 to 0.99 percent of total U.S. passenger enplanements while small and non-hub airports enplane from 0.05 to 0.249 percent and less than 0.05 percent, respectively. Appendix B contains a list of hub airports classified by size (large, medium, small, and non-hub) as well as a list of Federal contract towers.

The 30 large hub airports enplaned 571.2 million passengers in 2015 while the 31 medium and 74 small hub airports enplaned 122.6 and 66.0 million passengers, respectively. The 382 non-hub airports enplaned 22.0 million passengers. Enplanements at large hubs are expected to increase at an annual rate of 2.0 percent over the 2015 to 2045 forecast period. Medium and small hub airports are forecast to increase 2.0 percent and 1.8 percent annually, respectively, during the forecast period.

Operations at large hub airports totaled 12.6 million compared to 4.6 million and 6.8 million at medium and small hub airports, respectively. Operations at large hub airports are forecast to increase at an annual rate of 1.5 percent from 2015 to 2045, growing to 19.6 million. Operations at the medium hubs are forecast to rise at an annual rate of 1.3 percent from 2015 to 2045; aircraft operations at small hub airports are forecast to grow 0.7 percent per year.

Non-hub airports accounted for 25.8 million operations or 52 percent of total operations at FAA and Federal contract towers. General aviation aircraft operations accounted for the majority of operations at these smaller airports.

Large Hub Airports

Table S-1 presents enplanement forecast summaries for the large hub airports. Atlanta was the busiest airport in 2015 (48.4 million enplanements), followed by Chicago O'Hare (35.7 million), Los Angeles (35.7 million), and Dallas/Ft. Worth (34.1 million). Los Angeles is forecast to have the strongest growth in enplanements among the top four airports, increasing at an annual rate of 2.1 percent over the 2015 to 2045 forecast period. Atlanta, Dallas/Ft. Worth, and Chicago O'Hare are forecast to increase 1.9, 1.8, and 1.8 percent per year, respectively, over the forecast period. Graph S-1 shows relative enplanements growth over the next 30 years. The four airports with the fastest projected increase are Ft. Lauderdale, Las Vegas, Seattle, and Orlando.

Orlando is projected to make the largest upward movement in ranking of enplanements, from 15th to 10th. Miami and Washington National are projected to make the largest drops in rankings, going from 11th to 15th and 23rd to 27th, respectively.

Table S-2 presents operations forecast summaries for the large hub airports. In 2015, FAA controllers at Chicago O'Hare handled 881,000 landings and takeoffs, followed by Atlanta, which totaled 877,000 operations. The next busiest airports were Dallas/Ft. Worth and Los Angeles with 684,000 and 648,000 airport operations, respectively.

In 2045, Atlanta is projected to move into first place with 1.48 million operations. Los Angeles (1.15 million operations) is projected to increase to second place. Chicago O'Hare (1.15 million operations) and Dallas Ft. Worth (1.06 million operations) are projected to decrease to third and fourth place, respectively.

Graph S-2 shows that the five airports projected to grow the fastest in operations are Seattle, Orlando, Ft. Lauderdale, Los Angeles, and Memphis. San Francisco and Seattle are expected to move into the list of the top 10 busiest airports; Houston Intercontinental and Phoenix are expected to drop out of the top 10 ranking.

TAF and National Forecast Tables

Table S-1 Enplanements at Large Hub Airports (in thousands)

Loc ID	Region	Airport Name	2015					Rate**		Airport ranking	
			2015	Percent*	2016	2020	2045	2015-2045	2015	2045	
ATL	ASO	HARTSFIELD - JACKSON ATLANTA INTL	48,435	6.15	50,387	55,154	86,043	1.93	1	1	
ORD	AGL	CHICAGO O'HARE INTL	35,727	4.54	37,405	40,864	60,134	1.75	2	3	
LAX	AWP	LOS ANGELES INTL	35,714	4.54	38,699	44,067	66,133	2.07	3	2	
DFW	ASW	DALLAS/FORT WORTH INTL	31,356	3.98	31,451	33,604	54,028	1.83	4	4	
JFK	AEA	JOHN F KENNEDY INTL	27,406	3.48	28,901	31,630	52,463	2.18	5	5	
DEN	ANM	DENVER INTL	25,907	3.29	27,909	32,459	50,168	2.22	6	6	
SFO	AWP	SAN FRANCISCO INTL	23,732	3.01	25,460	29,279	46,355	2.25	7	7	
CLT	ASO	CHARLOTTE/DOUGLAS INTL	21,766	2.76	21,837	23,664	37,016	1.78	8	11	
LAS	AWP	MC CARRAN INTL	21,257	2.70	22,509	26,913	44,167	2.46	9	8	
PHX	AWP	PHOENIX SKY HARBOR INTL	21,209	2.69	21,021	22,929	36,636	1.83	10	12	
MIA	ASO	MIAMI INTL	20,494	2.60	21,059	22,253	35,018	1.80	11	15	
IAH	ASW	GEORGE BUSH INTERCONTINENTAL/HOUSTON	20,346	2.58	20,399	21,182	35,693	1.89	12	14	
SEA	ANM	SEATTLE-TACOMA INTL	19,632	2.49	21,465	24,646	40,065	2.40	13	9	
EWR	AEA	NEWARK LIBERTY INTL	18,391	2.33	19,595	22,632	35,858	2.25	14	13	
MCO	ASO	ORLANDO INTL	18,217	2.31	19,901	22,392	37,159	2.40	15	10	
MSP	AGL	MINNEAPOLIS-ST PAUL INTL/WOLD-CHAMBERLAIN	17,376	2.20	18,062	19,782	29,260	1.75	16	17	
BOS	ANE	GENERAL EDWARD LAWRENCE LOGAN INTL	16,079	2.04	17,333	19,926	31,376	2.25	17	16	
DTW	AGL	DETROIT METROPOLITAN WAYNE COUNTY	16,010	2.03	16,793	18,035	25,572	1.57	18	19	
PHL	AEA	PHILADELPHIA INTL	14,909	1.89	14,834	14,866	21,709	1.26	19	21	
LGA	AEA	LAGUARDIA	14,068	1.78	14,796	16,699	19,707	1.12	20	23	
FLL	ASO	FORT LAUDERDALE/HOLLYWOOD INTL	12,750	1.62	13,803	16,377	27,016	2.53	21	18	
BWI	AEA	BALTIMORE/WASHINGTON INTL THURGOOD MARSHALL	11,389	1.44	12,183	14,323	22,225	2.25	22	20	
DCA	AEA	RONALD REAGAN WASHINGTON NATIONAL	10,998	1.39	11,472	13,814	17,195	1.50	23	27	
MDW	AGL	CHICAGO MIDWAY INTL	10,746	1.36	11,022	12,534	19,122	1.93	24	24	
SLC	ANM	SALT LAKE CITY INTL	10,509	1.33	11,005	12,684	20,990	2.33	25	22	
IAD	AEA	WASHINGTON DULLES INTL	10,384	1.32	10,513	11,731	18,733	1.98	26	25	
SAN	AWP	SAN DIEGO INTL	9,801	1.24	10,272	11,577	17,812	2.01	27	26	
HNL	AWP	HONOLULU INTL	9,483	1.20	9,654	10,387	14,797	1.49	28	30	
TPA	ASO	TAMPA INTL	8,989	1.14	9,198	10,032	15,535	1.84	29	29	
PDX	ANM	PORTLAND INTL	8,154	1.03	8,904	10,411	16,230	2.32	30	28	
Totals			571,234	72.46	597,842	666,846	1,034,215	1.99			

*Percent of total US enplanements.

**Annual compound growth rate.

Graph S-1 Enplanements Growth Rates for the Large Hub Airports Fiscal Years 2015 to 2045

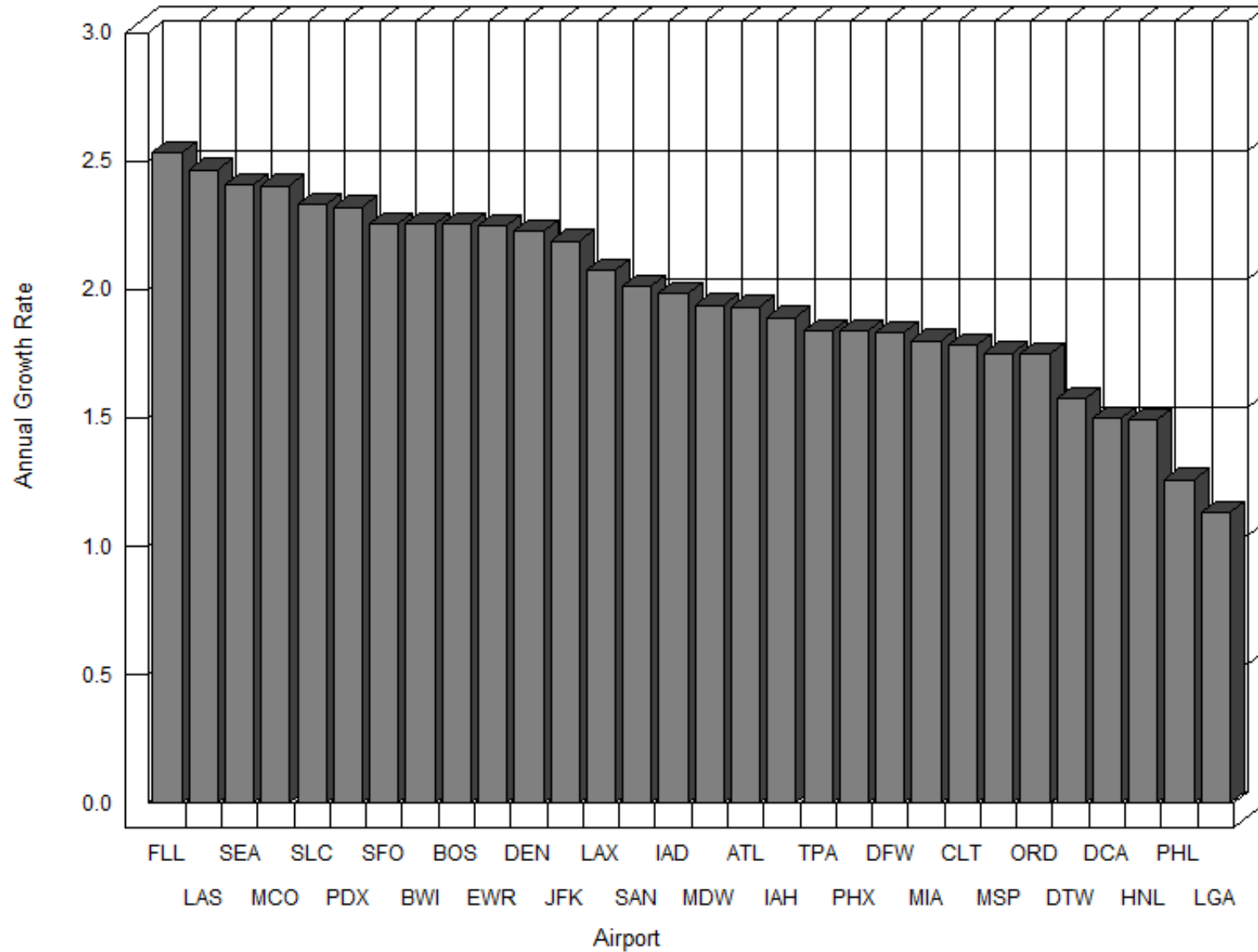


Table S-2 Airport Operations at Large Hub Airports (in thousands)

Loc ID	Region	Airport Name	2015					Rate**		Airport ranking	
			2015	Percent*	2016	2020	2045	2015-2045	2015	2045	
ORD	AGL	CHICAGO O'HARE INTL	881	0.90	872	836	1,148	0.88	1	3	
ATL	ASO	HARTSFIELD - JACKSON ATLANTA INTL	877	0.89	899	942	1,478	1.75	2	1	
DFW	ASW	DALLAS/FORT WORTH INTL	684	0.69	677	688	1,061	1.47	3	4	
LAX	AWP	LOS ANGELES INTL	648	0.66	686	784	1,150	1.92	4	2	
DEN	ANM	DENVER INTL	551	0.56	566	589	876	1.55	5	6	
CLT	ASO	CHARLOTTE/DOUGLAS INTL	546	0.55	546	592	894	1.65	6	5	
LAS	AWP	MC CARRAN INTL	521	0.53	533	574	855	1.66	7	7	
IAH	ASW	GEORGE BUSH INTERCONTINENTAL/HOUSTON	508	0.51	480	464	728	1.21	8	11	
JFK	AEA	JOHN F KENNEDY INTL	443	0.45	459	481	742	1.73	9	9	
PHX	AWP	PHOENIX SKY HARBOR INTL	438	0.44	442	468	721	1.66	10	12	
SFO	AWP	SAN FRANCISCO INTL	429	0.43	447	488	732	1.79	11	10	
EWR	AEA	NEWARK LIBERTY INTL	414	0.42	428	454	667	1.60	12	13	
PHL	AEA	PHILADELPHIA INTL	413	0.42	402	366	500	0.64	13	20	
MIA	ASO	MIAMI INTL	409	0.41	417	439	643	1.51	14	14	
MSP	AGL	MINNEAPOLIS-ST PAUL INTL/WOLD-CHAMBERLAIN	405	0.41	411	428	610	1.37	15	16	
DTW	AGL	DETROIT METROPOLITAN WAYNE COUNTY	380	0.38	392	394	549	1.23	16	18	
SEA	ANM	SEATTLE-TACOMA INTL	372	0.38	408	464	743	2.33	17	8	
BOS	ANE	GENERAL EDWARD LAWRENCE LOGAN INTL	372	0.38	395	426	627	1.75	18	15	
LGA	AEA	LAGUARDIA	369	0.37	375	385	387	0.15	19	25	
SLC	ANM	SALT LAKE CITY INTL	315	0.32	318	339	504	1.57	20	19	
HNL	AWP	HONOLULU INTL	314	0.32	308	325	435	1.08	21	23	
MCO	ASO	ORLANDO INTL	311	0.31	323	354	572	2.04	22	17	
IAD	AEA	WASHINGTON DULLES INTL	299	0.30	291	303	436	1.26	23	22	
DCA	AEA	RONALD REAGAN WASHINGTON NATIONAL	296	0.30	300	308	309	0.14	24	29	
FLL	ASO	FORT LAUDERDALE/HOLLYWOOD INTL	275	0.28	287	324	492	1.96	25	21	
MDW	AGL	CHICAGO MIDWAY INTL	254	0.25	252	264	378	1.33	26	26	
BWI	AEA	BALTIMORE/WASHINGTON INTL THURGOOD MARSHALL	245	0.25	248	271	411	1.74	27	24	
PDX	ANM	PORTLAND INTL	215	0.22	226	253	374	1.85	28	27	
SAN	AWP	SAN DIEGO INTL	195	0.19	196	216	326	1.72	29	28	
TPA	ASO	TAMPA INTL	190	0.19	189	197	288	1.39	30	30	
Totals			12,569	12.71	12,773	13,416	19,636	1.49			

Percent of total US operations.

**Annual compound growth rate.

Graph S-2 Airport Operations Growth Rates for the Large Hub Airports Fiscal Years 2015 to 2045

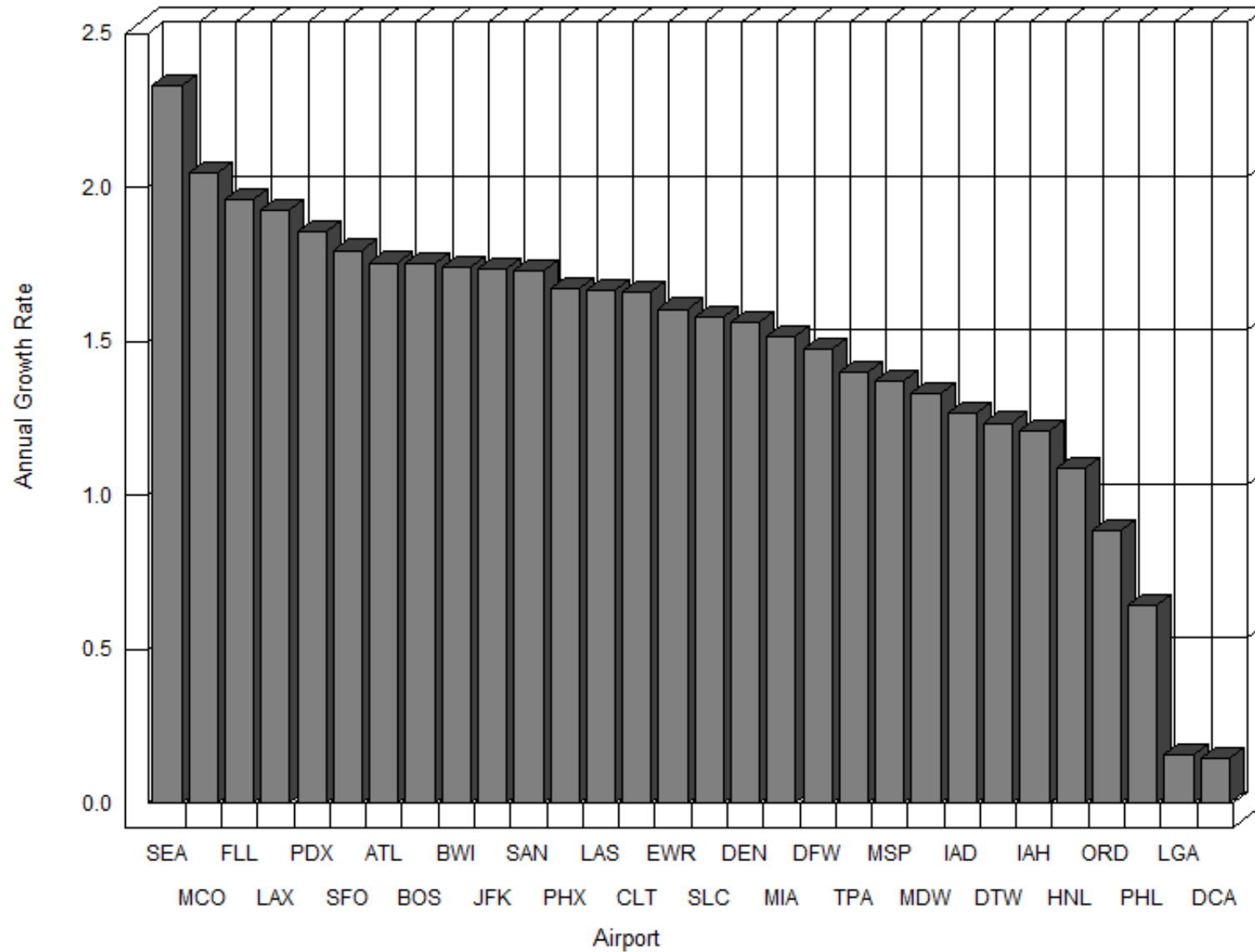


Table S-3 Air Traffic Control Towers and Contract Towers by Region and State

Region/State	FAA Towers	Contract Towers
Alaskan Region		
Alaska	4	4
Regional Total	4	4
Central Region		
Iowa	4	1
Kansas	1	8
Missouri	5	5
Nebraska	2	1
Regional Total	12	15
Eastern Region		
Delaware	1	0
District of Columbia	3	0
Maryland	2	5
New Jersey	5	1
New York	12	5
Pennsylvania	9	5
Virginia	4	2
West Virginia	3	4
Regional Total	39	22
Great Lakes Region		
Illinois	11	6
Indiana	6	4
Michigan	11	4
Minnesota	6	2
North Dakota	3	1
Ohio	7	5
South Dakota	1	1
Wisconsin	3	9
Regional Total	48	32
New England Region		
Connecticut	1	6
Maine	2	0
Massachusetts	3	8
New Hampshire	1	2
Rhode Island	1	0
Vermont	1	0
Regional Total	9	16

Region/State	FAA Towers	Contract Towers
Northwest Mountain Region		
Colorado	6	3
Idaho	2	4
Montana	3	3
Oregon	3	8
Utah	1	2
Washington	6	7
Wyoming	1	2
Regional Total	22	29
Southern Region		
Alabama	4	3
Florida	18	25
Georgia	5	6
Kentucky	4	2
Mississippi	2	7
North Carolina	6	5
Puerto Rico	1	2
South Carolina	5	4
Tennessee	5	3
Virgin Islands	1	1
Regional Total	51	58
Southwestern Region		
Arkansas	2	5
Louisiana	7	5
New Mexico	2	4
Oklahoma	3	6
Texas	19	23
Regional Total	33	43
Western Pacific Region		
Arizona	7	7
California	33	20
Guam	0	1
Hawaii	3	4
Nevada	3	1
Northern Mariana Isl	0	1
Regional Total	46	34
Grand Total	264	253

Table S-4 Ranking of Top 100 FAA Towers by Total Enplanements, FY 2015

Rank	City	Location Enplaned State Identifier	Enplaned Passengers*	Percent of Total**	Cumulative Enplanements	Cumulative Percentage	Commercial Operations***	Cumulative Operations
1	ATLANTA	GA ATL	48,434,965	6.15	48,434,965	6.15	868,737	868,737
2	CHICAGO	IL ORD	35,726,566	4.54	84,161,531	10.70	873,751	1,742,488
3	LOS ANGELES	CA LAX	35,713,699	4.54	119,875,230	15.24	627,511	2,369,999
4	DALLAS-FORT WORTH	TX DFW	31,356,173	3.98	151,231,403	19.23	676,820	3,046,819
5	NEW YORK	NY JFK	27,405,588	3.48	178,636,991	22.71	434,519	3,481,338
6	DENVER	CO DEN	25,907,123	3.29	204,544,114	26.01	546,271	4,027,609
7	SAN FRANCISCO	CA SFO	23,731,715	3.01	228,275,829	29.02	413,002	4,440,611
8	CHARLOTTE	NC CLT	21,766,399	2.76	250,042,228	31.79	517,231	4,957,842
9	LAS VEGAS	NV LAS	21,257,181	2.70	271,299,409	34.49	472,483	5,430,325
10	PHOENIX	AZ PHX	21,209,433	2.69	292,508,842	37.19	413,589	5,843,914
11	MIAMI	FL MIA	20,494,420	2.60	313,003,262	39.80	389,821	6,233,735
12	HOUSTON	TX IAH	20,346,164	2.58	333,349,426	42.38	494,879	6,728,614
13	SEATTLE	WA SEA	19,632,158	2.49	352,981,584	44.88	367,930	7,096,544
14	NEWARK	NJ EWR	18,391,437	2.33	371,373,021	47.22	403,219	7,499,763
15	ORLANDO	FL MCO	18,217,381	2.31	389,590,402	49.54	294,960	7,794,723
16	MINNEAPOLIS	MN MSP	17,376,022	2.20	406,966,424	51.75	390,959	8,185,682
17	BOSTON	MA BOS	16,079,273	2.04	423,045,697	53.79	356,088	8,541,770
18	DETROIT	MI DTW	16,009,736	2.03	439,055,433	55.83	374,525	8,916,295
19	PHILADELPHIA	PA PHL	14,909,333	1.89	453,964,766	57.72	397,947	9,314,242
20	NEW YORK	NY LGA	14,067,792	1.78	468,032,558	59.51	362,937	9,677,179
21	FORT LAUDERDALE	FL FLL	12,749,891	1.62	480,782,449	61.13	236,619	9,913,798
22	BALTIMORE	MD BWI	11,389,289	1.44	492,171,738	62.58	225,725	10,139,523
23	WASHINGTON	DC DCA	10,998,423	1.39	503,170,161	63.98	289,715	10,429,238
24	CHICAGO	IL MDW	10,745,909	1.36	513,916,070	65.35	213,844	10,643,082
25	SALT LAKE CITY	UT SLC	10,509,227	1.33	524,425,297	66.68	261,663	10,904,745
26	WASHINGTON	DC IAD	10,384,150	1.32	534,809,447	68.00	261,427	11,166,172
27	SAN DIEGO	CA SAN	9,800,822	1.24	544,610,269	69.25	184,621	11,350,793
28	HONOLULU	HI HNL	9,483,424	1.20	554,093,693	70.46	242,442	11,593,235
29	TAMPA	FL TPA	8,988,630	1.14	563,082,323	71.60	167,576	11,760,811
30	PORTLAND	OR PDX	8,153,874	1.03	571,236,197	72.64	189,264	11,950,075
31	DALLAS	TX DAL	6,495,869	0.82	577,732,066	73.46	151,035	12,101,110
32	ST LOUIS	MO STL	6,171,330	0.78	583,903,396	74.25	175,488	12,276,598
33	HOUSTON	TX HOU	5,765,544	0.73	589,668,940	74.98	141,779	12,418,377
34	AUSTIN	TX AUS	5,643,251	0.71	595,312,191	75.70	127,909	12,546,286
35	NASHVILLE	TN BNA	5,588,136	0.71	600,900,327	76.41	144,291	12,690,577
36	OAKLAND	CA OAK	5,391,019	0.68	606,291,346	77.09	135,145	12,825,722
37	NEW ORLEANS	LA MSY	5,230,106	0.66	611,521,452	77.76	114,506	12,940,228
38	KANSAS CITY	MO MCI	5,103,973	0.64	616,625,425	78.41	116,706	13,056,934
39	RALEIGH/DURHAM	NC RDU	4,820,903	0.61	621,446,328	79.02	132,492	13,189,426
40	SANTA ANA	CA SNA	4,806,025	0.61	626,252,353	79.63	97,225	13,286,651

Table S-4 Ranking of Top 100 FAA Towers by Total Enplanements, FY 2015

Rank	City	Location Enplaned		Percent	Cumulative	Cumulative Commercial	Cumulative		
		State	Identifier	Passengers*	of Total**	Enplanements	Percentage Operations***	Operations	
41	SAN JOSE	CA	SJC	4,753,565	0.60	631,005,918	80.24	113,221	13,399,872
42	SACRAMENTO	CA	SMF	4,616,461	0.58	635,622,379	80.82	96,151	13,496,023
43	SAN JUAN	PR	SJU	4,152,061	0.52	639,774,440	81.35	138,773	13,634,796
44	FORT MYERS	FL	RSW	4,084,901	0.51	643,859,341	81.87	68,779	13,703,575
45	SAN ANTONIO	TX	SAT	4,057,345	0.51	647,916,686	82.39	114,419	13,817,994
46	PITTSBURGH	PA	PIT	3,854,680	0.49	651,771,366	82.88	122,737	13,940,731
47	CLEVELAND	OH	CLE	3,792,283	0.48	655,563,649	83.36	107,287	14,048,018
48	INDIANAPOLIS	IN	IND	3,750,408	0.47	659,314,057	83.84	135,327	14,183,345
49	COLUMBUS	OH	CMH	3,229,898	0.41	662,543,955	84.25	103,942	14,287,287
50	MILWAUKEE	WI	MKE	3,221,801	0.40	665,765,756	84.66	96,692	14,383,979
51	KAHULUI	HI	OGG	3,187,235	0.40	668,952,991	85.06	115,391	14,499,370
52	WEST PALM BEACH	FL	PBI	3,063,855	0.38	672,016,846	85.45	81,571	14,580,941
53	COVINGTON	KY	CVG	2,985,743	0.37	675,002,589	85.83	127,873	14,708,814
54	WINDSOR LOCKS	CT	BDL	2,920,563	0.37	677,923,152	86.20	77,173	14,785,987
55	JACKSONVILLE	FL	JAX	2,686,257	0.34	680,609,409	86.54	73,080	14,859,067
56	ANCHORAGE	AK	ANC	2,498,553	0.31	683,107,962	86.86	187,458	15,046,525
57	BUFFALO	NY	BUF	2,339,906	0.29	685,447,868	87.16	70,108	15,116,633
58	ALBUQUERQUE	NM	ABQ	2,307,193	0.29	687,755,061	87.45	75,496	15,192,129
59	ONTARIO	CA	ONT	2,062,768	0.26	689,817,829	87.71	68,763	15,260,892
60	OMAHA	NE	OMA	2,028,254	0.25	691,846,083	87.97	66,624	15,327,516
61	BURBANK	CA	BUR	1,960,137	0.24	693,806,220	88.22	60,852	15,388,368
62	MEMPHIS	TN	MEM	1,830,184	0.23	695,636,404	88.45	195,941	15,584,309
63	OKLAHOMA CITY	OK	OKC	1,814,393	0.23	697,450,797	88.69	56,950	15,641,259
64	PROVIDENCE	RI	PVD	1,751,566	0.22	699,202,363	88.91	42,702	15,683,961
65	RICHMOND	VA	RIC	1,718,820	0.21	700,921,183	89.13	64,252	15,748,213
66	CHARLESTON	SC	CHS	1,634,272	0.20	702,555,455	89.33	56,175	15,804,388
67	LOUISVILLE	KY	SDF	1,631,745	0.20	704,187,200	89.54	132,968	15,937,356
68	RENO	NV	RNO	1,627,676	0.20	705,814,876	89.75	48,137	15,985,493
69	TUCSON	AZ	TUS	1,561,272	0.19	707,376,148	89.95	48,750	16,034,243
70	SPOKANE	WA	GEG	1,499,482	0.19	708,875,630	90.14	44,819	16,079,062
71	NORFOLK	VA	ORF	1,483,177	0.18	710,358,807	90.33	50,236	16,129,298
72	KAILUA/KONA	HI	KOA	1,468,692	0.18	711,827,499	90.51	47,594	16,176,892
73	BOISE	ID	BOI	1,454,535	0.18	713,282,034	90.70	49,650	16,226,542
74	GUAM	GU	GUM	1,429,785	0.18	714,711,819	90.88	25,866	16,252,408
75	EL PASO	TX	ELP	1,370,243	0.17	716,082,062	91.05	49,538	16,301,946
76	LIHUE	HI	LIH	1,359,989	0.17	717,442,051	91.23	101,498	16,403,444
77	TULSA	OK	TUL	1,356,880	0.17	718,798,931	91.40	50,019	16,453,463
78	BIRMINGHAM	AL	BHM	1,314,680	0.16	720,113,611	91.57	49,018	16,502,481
79	GRAND RAPIDS	MI	GRR	1,256,931	0.15	721,370,542	91.73	41,511	16,543,992
80	ALBANY	NY	ALB	1,253,533	0.15	722,624,075	91.89	43,691	16,587,683

Table S-4 Ranking of Top 100 FAA Towers by Total Enplanements, FY 2015

Rank	City	Location Enplaned State Identifier	Passengers*	Percent of Total**	Cumulative Enplanements	Cumulative Percentage	Commercial Operations***	Cumulative Operations
81	LONG BEACH	CA LGB	1,234,321	0.15	723,858,396	92.04	30,075	16,617,758
82	ROCHESTER	NY ROC	1,166,505	0.14	725,024,901	92.19	44,234	16,661,992
83	DES MOINES	IA DSM	1,142,750	0.14	726,167,651	92.34	40,361	16,702,353
84	ORLANDO	FL SFB	1,134,834	0.14	727,302,485	92.48	97,223	16,799,576
85	DAYTON	OH DAY	1,048,609	0.13	728,351,094	92.61	39,308	16,838,884
86	MANCHESTER	NH MHT	1,020,196	0.12	729,371,290	92.74	37,977	16,876,861
87	SYRACUSE	NY SYR	986,124	0.12	730,357,414	92.87	43,126	16,919,987
88	SAVANNAH	GA SAV	967,088	0.12	731,324,502	92.99	39,064	16,959,051
89	LITTLE ROCK	AR LIT	962,691	0.12	732,287,193	93.12	34,948	16,993,999
90	PALM SPRINGS	CA PSP	958,649	0.12	733,245,842	93.24	30,661	17,024,660
91	GREER	SC GSP	944,741	0.12	734,190,583	93.36	33,332	17,057,992
92	MYRTLE BEACH	SC MYR	895,675	0.11	735,086,258	93.47	166,035	17,224,027
93	PORTLAND	ME PWM	847,626	0.10	735,933,884	93.58	29,886	17,253,913
94	GREENSBORO	NC GSO	845,752	0.10	736,779,636	93.69	46,743	17,300,656
95	KNOXVILLE	TN TYS	839,079	0.10	737,618,715	93.79	41,416	17,342,072
96	MADISON	WI MSN	827,520	0.10	738,446,235	93.90	30,698	17,372,770
97	PENSACOLA	FL PNS	776,139	0.09	739,222,374	94.00	26,345	17,399,115
98	ST PETERSBURG-CLEARWATER	FL PIE	773,083	0.09	739,995,457	94.10	14,387	17,413,502
99	WICHITA	KS ICT	772,648	0.09	740,768,105	94.19	39,665	17,453,167
100	AKRON	OH CAK	770,312	0.09	741,538,417	94.29	28,024	17,481,191
Total of airports 101 thru 517			40,314,380	5.156	781,852,797	99.45	4,175,211	21,656,402

*Enplanements include air carrier, commuter and international.

**Percent is of national total enplanements.

***Operations include itinerant air carrier and air taxi only.

Table S-5 Summary of Enplanements and Airport Operations at FAA Towers and Contract Towers

Enplanements at Towered Airports

	Count	2015	2045	Annual Compound Growth Rate 2015-2045
Large Hubs	30	571,236,197	1,034,216,581	1.99
Medium Hubs	31	122,570,023	221,284,679	1.98
Small Hubs	74	66,017,151	113,554,451	1.82
Non Hub Towers	382	22,029,426	33,884,120	1.44
Total	517	781,852,797	1,402,939,831	1.96

Operations at Towered Airports

	Count	2015	2045	Annual Compound Growth Rate 2015-2045
Large Hubs	30	12,569,667	19,633,308	1.49
Medium Hubs	31	4,614,873	6,785,662	1.29
Small Hubs	74	6,806,693	8,474,991	0.73
Non Hub Towers	382	25,826,784	28,693,046	0.35
Total	517	49,818,017	63,587,007	0.81

Table S-6 Commercial Airport Operations Summary by Region*

Fiscal Year	Alaska (AAL)	Central (ACE)	Eastern (AEA)	Great Lakes (AGL)	New England (ANE)	Northwest Mountain (ANM)	Southern (ASO)	Southwest (ASW)	Western Pacific (AWP)	National Total
Historical										
2012	978,538	750,262	3,748,561	3,801,157	984,577	2,357,975	5,157,408	2,705,244	4,402,743	24,886,465
2013	973,892	728,014	3,650,772	3,769,368	954,733	2,295,774	5,103,800	2,730,735	4,385,286	24,592,374
2014	975,078	722,148	3,584,168	3,672,932	939,378	2,296,273	5,040,093	2,723,520	4,462,686	24,416,276
2015	1,008,977	709,188	3,563,852	3,607,837	919,479	2,262,023	5,251,137	2,713,659	4,538,884	24,575,036
Forecast										
2016	987,822	714,249	3,610,861	3,627,398	940,305	2,350,413	5,337,205	2,659,952	4,688,894	24,917,099
2017	993,921	738,951	3,622,871	3,657,515	956,795	2,429,547	5,480,573	2,627,238	4,825,142	25,332,553
2018	999,684	744,080	3,653,420	3,646,824	965,671	2,465,363	5,554,678	2,659,237	4,908,732	25,597,689
2019	1,005,244	747,795	3,674,977	3,624,184	972,970	2,496,958	5,619,166	2,685,129	4,985,790	25,812,213
2020	1,010,843	751,730	3,693,465	3,603,476	980,223	2,528,398	5,683,364	2,709,756	5,060,815	26,022,070
2021	1,016,336	756,172	3,713,115	3,587,874	987,955	2,559,005	5,749,796	2,734,916	5,136,311	26,241,480
2022	1,021,740	762,072	3,739,892	3,592,679	997,258	2,592,777	5,824,661	2,766,452	5,210,963	26,508,494
2023	1,027,118	770,384	3,781,456	3,628,796	1,009,076	2,631,774	5,913,029	2,808,043	5,284,782	26,854,458
2024	1,032,935	779,283	3,827,058	3,673,432	1,021,414	2,671,187	6,003,252	2,851,796	5,357,157	27,217,514
2025	1,039,002	788,432	3,873,670	3,719,650	1,033,991	2,711,559	6,095,265	2,896,843	5,430,610	27,589,022
2026	1,045,266	798,214	3,922,726	3,769,076	1,047,455	2,754,618	6,193,312	2,944,429	5,509,043	27,984,139
2027	1,051,590	808,051	3,972,016	3,818,651	1,060,935	2,797,731	6,292,596	2,991,907	5,587,497	28,380,974
2028	1,058,039	817,986	4,021,228	3,868,499	1,074,441	2,841,018	6,391,603	3,040,050	5,666,727	28,779,591
2029	1,064,644	828,200	4,071,594	3,919,601	1,088,314	2,885,446	6,493,251	3,089,249	5,748,183	29,188,482
2030	1,071,301	838,479	4,121,797	3,970,896	1,102,210	2,930,142	6,595,101	3,138,673	5,829,995	29,598,594
2031	1,078,039	848,784	4,172,294	4,022,100	1,116,170	2,975,034	6,697,973	3,188,292	5,912,025	30,010,711
2032	1,084,801	859,049	4,222,900	4,073,321	1,130,147	3,020,205	6,802,082	3,238,128	5,994,264	30,424,897
2033	1,091,689	869,445	4,273,653	4,125,010	1,144,212	3,065,886	6,906,701	3,288,550	6,077,070	30,842,216
2034	1,098,742	880,213	4,325,678	4,178,266	1,158,699	3,113,042	7,013,473	3,340,547	6,162,728	31,271,388
2035	1,105,986	891,378	4,379,057	4,233,598	1,173,653	3,162,186	7,123,591	3,394,397	6,251,438	31,715,284
2036	1,113,314	902,627	4,432,701	4,289,347	1,188,653	3,211,619	7,234,547	3,448,523	6,341,320	32,162,651
2037	1,120,664	913,746	4,485,578	4,344,215	1,203,483	3,260,784	7,343,691	3,502,382	6,430,600	32,605,143
2038	1,128,098	925,007	4,539,008	4,399,744	1,218,508	3,310,181	7,454,423	3,556,437	6,520,328	33,051,734
2039	1,135,653	936,463	4,592,752	4,455,708	1,233,632	3,360,244	7,566,394	3,610,905	6,610,643	33,502,394
2040	1,143,244	947,991	4,646,409	4,512,026	1,248,806	3,411,056	7,678,493	3,665,870	6,701,839	33,955,734
2041	1,150,975	959,417	4,700,102	4,567,772	1,263,871	3,461,857	7,790,485	3,720,422	6,792,527	34,407,428
2042	1,158,804	970,920	4,753,692	4,623,883	1,278,987	3,513,238	7,902,940	3,775,659	6,883,203	34,861,326
2043	1,166,654	982,691	4,808,078	4,681,239	1,294,393	3,565,570	8,017,426	3,831,916	6,975,909	35,323,876
2044	1,174,626	994,724	4,863,473	4,739,739	1,309,992	3,618,809	8,134,089	3,889,129	7,070,564	35,795,145
2045	1,182,724	1,006,954	4,919,342	4,799,039	1,325,798	3,673,078	8,252,270	3,947,018	7,166,575	36,272,798

*Includes air carrier and commuter/air taxi operations at all airports.

Table S-7 Itinerant Airport Operations Summary by Region*

Fiscal Year	Alaska (AAL)	Central (ACE)	Eastern (AEA)	Great Lakes (AGL)	New England (ANE)	Northwest Mountain (ANM)	Southern (ASO)	Southwest (ASW)	Western Pacific (AWP)	National Total
Historical										
2012	1,515,204	2,690,523	7,191,580	8,993,370	2,317,060	6,434,950	14,620,128	7,678,646	10,550,620	61,992,081
2013	1,505,447	2,618,381	6,878,525	8,820,532	2,209,568	6,315,070	14,506,854	7,773,617	10,465,233	61,093,227
2014	1,509,699	2,555,492	6,796,127	8,614,121	2,171,164	6,203,884	14,364,861	7,614,454	10,627,242	60,457,044
2015	1,497,293	2,544,248	6,749,553	8,552,100	2,101,617	6,194,866	14,659,974	7,551,992	10,686,692	60,538,335
Forecast										
2016	1,483,620	2,551,626	6,818,751	8,615,391	2,146,873	6,303,213	14,747,990	7,533,024	10,744,909	60,945,397
2017	1,493,897	2,570,702	6,830,502	8,642,460	2,156,045	6,432,346	14,938,411	7,524,403	10,875,769	61,464,535
2018	1,500,297	2,577,033	6,871,856	8,643,848	2,165,800	6,502,316	15,033,026	7,573,911	10,970,167	61,838,254
2019	1,506,498	2,581,958	6,904,402	8,633,476	2,173,979	6,568,636	15,118,295	7,617,583	11,058,129	62,162,956
2020	1,512,739	2,587,108	6,934,013	8,625,186	2,182,114	6,635,210	15,203,556	7,660,278	11,144,156	62,484,360
2021	1,518,879	2,592,774	6,964,914	8,622,142	2,190,731	6,701,364	15,291,324	7,703,827	11,230,748	62,816,703
2022	1,524,931	2,599,901	7,003,065	8,639,665	2,200,921	6,771,286	15,387,823	7,754,053	11,316,602	63,198,247
2023	1,530,959	2,609,444	7,056,149	8,688,655	2,213,632	6,847,072	15,498,117	7,814,589	11,401,730	63,660,347
2024	1,537,429	2,619,583	7,113,365	8,746,107	2,226,864	6,924,065	15,610,577	7,877,592	11,485,517	64,141,099
2025	1,544,151	2,629,977	7,171,735	8,805,337	2,240,339	7,002,695	15,725,122	7,942,252	11,570,490	64,632,098
2026	1,551,073	2,641,008	7,232,691	8,867,979	2,254,704	7,084,745	15,846,014	8,009,785	11,660,556	65,148,555
2027	1,558,057	2,652,101	7,294,031	8,930,970	2,269,088	7,167,624	15,968,448	8,077,550	11,750,747	65,668,616
2028	1,565,168	2,663,300	7,355,438	8,994,431	2,283,502	7,251,485	16,090,925	8,146,341	11,841,826	66,192,416
2029	1,572,438	2,674,781	7,418,167	9,059,409	2,298,285	7,337,288	16,216,370	8,216,531	11,935,245	66,728,514
2030	1,579,763	2,686,337	7,480,630	9,124,782	2,313,093	7,424,186	16,342,360	8,287,330	12,029,139	67,267,620
2031	1,587,174	2,697,929	7,543,553	9,190,306	2,327,967	7,512,139	16,469,708	8,358,690	12,123,378	67,810,844
2032	1,594,611	2,709,497	7,606,743	9,256,085	2,342,865	7,601,242	16,598,640	8,430,648	12,217,946	68,358,277
2033	1,602,175	2,721,207	7,670,270	9,322,559	2,357,854	7,691,749	16,728,437	8,503,579	12,313,208	68,911,038
2034	1,609,908	2,733,301	7,735,239	9,390,878	2,373,266	7,784,648	16,860,736	8,578,481	12,411,450	69,477,907
2035	1,617,833	2,745,808	7,801,739	9,461,513	2,389,148	7,880,497	16,996,744	8,655,646	12,512,872	70,061,800
2036	1,625,845	2,758,410	7,868,688	9,532,823	2,405,079	7,977,602	17,133,964	8,733,515	12,615,603	70,651,529
2037	1,633,882	2,770,897	7,935,051	9,603,522	2,420,846	8,075,406	17,269,734	8,811,554	12,717,876	71,238,768
2038	1,642,007	2,783,537	8,002,151	9,675,150	2,436,810	8,174,458	17,407,491	8,890,222	12,820,730	71,832,556
2039	1,650,254	2,796,385	8,069,749	9,747,487	2,452,877	8,275,230	17,546,883	8,969,750	12,924,316	72,432,931
2040	1,658,540	2,809,323	8,137,444	9,820,455	2,468,995	8,377,809	17,686,803	9,050,240	13,028,934	73,038,543
2041	1,666,970	2,822,175	8,205,371	9,893,130	2,485,007	8,480,866	17,827,024	9,130,781	13,133,191	73,644,515
2042	1,675,500	2,835,120	8,273,397	9,966,463	2,501,075	8,586,256	17,968,119	9,212,495	13,237,586	74,256,011
2043	1,684,052	2,848,346	8,342,431	10,041,336	2,517,436	8,693,748	18,111,670	9,295,722	13,344,163	74,878,904
2044	1,692,730	2,861,851	8,412,678	10,117,661	2,533,992	8,803,337	18,257,821	9,380,414	13,452,851	75,513,335
2045	1,701,538	2,875,569	8,483,615	10,195,095	2,550,757	8,915,175	18,405,929	9,466,305	13,563,062	76,157,045

*Includes itinerant air carrier, commuter/air taxi, general aviation and military operations at all airports.

Table S-8 Total Airport Operations Summary by Region*

Fiscal Year	Alaska (AAL)	Central (ACE)	Eastern (AEA)	Great Lakes (AGL)	New England (ANE)	Northwest Mountain (ANM)	Southern (ASO)	Southwest (ASW)	Western Pacific (AWP)	National Total
Historical										
2012	1,843,881	4,740,615	11,169,965	15,649,076	3,766,936	10,346,539	22,273,778	13,033,449	16,445,328	99,269,567
2013	1,838,141	4,657,963	10,820,264	15,305,524	3,561,861	10,167,585	22,318,112	13,066,676	16,398,906	98,135,032
2014	1,841,688	4,557,087	10,687,236	14,938,964	3,475,019	10,066,210	22,163,485	12,961,740	16,685,281	97,376,710
2015	1,861,740	4,548,395	10,642,909	14,875,956	3,364,203	10,228,655	22,506,817	12,986,170	16,714,228	97,729,073
Forecast										
2016	1,852,795	4,523,162	10,696,697	14,955,110	3,421,678	10,318,050	22,629,758	12,938,956	16,733,817	98,070,023
2017	1,863,528	4,532,564	10,708,951	14,997,861	3,433,033	10,479,672	22,857,065	12,954,419	16,878,435	98,705,528
2018	1,870,845	4,540,234	10,767,079	15,018,845	3,443,629	10,578,749	22,974,936	13,024,713	16,985,248	99,204,278
2019	1,877,965	4,546,508	10,816,682	15,028,861	3,452,652	10,674,607	23,083,803	13,089,514	17,085,714	99,656,306
2020	1,885,125	4,553,014	10,863,870	15,041,247	3,461,635	10,771,320	23,193,017	13,153,672	17,184,342	100,107,242
2021	1,892,185	4,560,041	10,912,048	15,059,028	3,471,104	10,868,026	23,305,088	13,219,056	17,283,629	100,570,205
2022	1,899,158	4,568,547	10,968,003	15,097,639	3,482,149	10,968,977	23,426,258	13,291,462	17,382,266	101,084,459
2023	1,906,108	4,579,480	11,039,138	15,167,932	3,495,720	11,076,358	23,561,592	13,374,545	17,480,281	101,681,154
2024	1,913,501	4,591,015	11,114,640	15,246,510	3,509,815	11,185,481	23,699,464	13,460,482	17,577,057	102,297,965
2025	1,921,147	4,602,818	11,191,560	15,327,182	3,524,155	11,296,786	23,839,801	13,548,445	17,675,120	102,927,014
2026	1,929,070	4,615,271	11,271,341	15,411,571	3,539,389	11,412,128	23,986,877	13,639,676	17,778,374	103,583,697
2027	1,937,056	4,627,795	11,351,779	15,496,614	3,554,646	11,528,933	24,135,885	13,731,543	17,881,855	104,246,106
2028	1,945,169	4,640,438	11,432,559	15,582,432	3,569,936	11,647,383	24,285,354	13,824,839	17,986,325	104,914,435
2029	1,953,442	4,653,374	11,514,958	15,670,160	3,585,598	11,768,443	24,438,200	13,919,963	18,093,246	105,597,384
2030	1,961,771	4,666,393	11,597,101	15,758,603	3,601,288	11,891,309	24,592,026	14,016,141	18,200,748	106,285,380
2031	1,970,186	4,679,461	11,679,999	15,847,549	3,617,046	12,015,940	24,747,637	14,113,322	18,308,700	106,979,840
2032	1,978,629	4,692,518	11,763,473	15,937,082	3,632,834	12,142,452	24,905,275	14,211,547	18,417,086	107,680,896
2033	1,987,277	4,705,725	11,847,609	16,027,658	3,648,716	12,271,115	25,064,223	14,311,209	18,526,276	108,389,808
2034	1,996,094	4,719,332	11,933,503	16,120,578	3,665,025	12,402,938	25,226,128	14,413,316	18,638,565	109,115,479
2035	2,005,104	4,733,364	12,021,256	16,216,201	3,681,808	12,538,503	25,392,219	14,518,173	18,754,145	109,860,773
2036	2,014,202	4,747,500	12,109,788	16,312,890	3,698,644	12,676,134	25,560,005	14,624,218	18,871,150	110,614,531
2037	2,023,326	4,761,536	12,198,066	16,409,370	3,715,320	12,815,299	25,726,822	14,730,929	18,987,807	111,368,475
2038	2,032,538	4,775,738	12,287,433	16,507,170	3,732,195	12,956,577	25,896,137	14,838,794	19,105,159	112,131,741
2039	2,041,873	4,790,163	12,377,650	16,606,114	3,749,178	13,100,446	26,067,589	14,948,035	19,223,361	112,904,409
2040	2,051,324	4,804,687	12,468,324	16,706,097	3,766,217	13,247,047	26,240,078	15,058,779	19,342,718	113,685,271
2041	2,060,934	4,819,141	12,559,603	16,806,212	3,783,154	13,394,580	26,413,388	15,170,120	19,461,830	114,468,962
2042	2,070,659	4,833,700	12,651,361	16,907,425	3,800,150	13,545,926	26,588,123	15,283,195	19,581,203	115,261,742
2043	2,080,420	4,848,556	12,744,518	17,010,625	3,817,442	13,700,386	26,765,863	15,398,359	19,702,892	116,069,061
2044	2,090,322	4,863,705	12,839,286	17,115,735	3,834,935	13,857,977	26,946,760	15,515,570	19,826,816	116,891,106
2045	2,100,368	4,879,079	12,935,148	17,222,416	3,852,640	14,018,887	27,130,193	15,634,577	19,952,389	117,725,697

*Includes all itinerant and local operations at all airports.

Table S-9 TRACON Operations Summary by Region

Fiscal Year						Northwest			Western	National Total
	Alaska (AAL)	Central (ACE)	Eastern (AEA)	Great Lakes (AGL)	New England (ANE)	Mountain (ANM)	Southern (ASO)	Southwest (ASW)	Pacific (AWP)	
Historical										
2012	367,648	1,318,638	5,918,379	5,386,757	1,397,435	2,840,736	9,277,018	5,214,290	6,057,072	37,777,973
2013	358,581	1,239,629	5,676,943	5,215,434	1,363,177	2,775,624	9,179,526	5,160,831	6,014,158	36,983,903
2014	359,662	1,223,564	5,629,251	5,072,721	1,356,804	2,834,102	9,005,002	5,132,931	6,208,864	36,822,901
2015	370,069	1,220,302	5,657,365	5,022,396	1,341,910	2,860,833	9,230,649	5,150,627	6,338,774	37,192,925
Forecast										
2016	365,668	1,239,021	5,727,081	5,106,956	1,387,818	2,928,600	9,419,543	5,140,572	6,397,624	37,712,883
2017	367,744	1,256,036	5,734,887	5,127,306	1,406,044	3,000,864	9,573,286	5,115,883	6,528,785	38,110,835
2018	370,882	1,260,036	5,760,935	5,112,131	1,412,402	3,033,650	9,646,196	5,151,745	6,612,877	38,360,854
2019	373,829	1,262,134	5,775,165	5,082,530	1,416,437	3,061,595	9,706,000	5,180,324	6,688,765	38,546,779
2020	376,803	1,264,510	5,786,059	5,054,997	1,420,541	3,089,195	9,765,922	5,207,600	6,762,786	38,728,413
2021	379,667	1,267,649	5,799,336	5,033,609	1,425,535	3,117,913	9,829,906	5,235,827	6,837,982	38,927,424
2022	382,441	1,273,229	5,827,786	5,036,905	1,433,642	3,150,684	9,909,515	5,272,228	6,915,334	39,201,764
2023	385,219	1,282,699	5,878,116	5,077,972	1,446,597	3,189,982	10,013,104	5,321,410	6,996,318	39,591,417
2024	388,419	1,293,189	5,934,928	5,129,407	1,460,792	3,230,063	10,121,467	5,373,478	7,077,038	40,008,781
2025	391,830	1,303,980	5,993,108	5,182,661	1,475,299	3,271,124	10,232,073	5,426,968	7,159,007	40,436,050
2026	395,394	1,315,498	6,054,282	5,239,617	1,490,817	3,314,861	10,349,687	5,483,310	7,246,349	40,889,815
2027	398,989	1,327,066	6,115,736	5,296,705	1,506,353	3,358,651	10,468,590	5,539,557	7,333,808	41,345,455
2028	402,669	1,338,734	6,177,166	5,354,030	1,521,924	3,402,577	10,587,295	5,596,495	7,422,064	41,802,954
2029	406,474	1,350,711	6,240,013	5,412,832	1,537,906	3,447,623	10,709,070	5,654,632	7,512,705	42,271,966
2030	410,311	1,362,754	6,302,763	5,471,788	1,553,906	3,492,910	10,831,265	5,712,999	7,603,736	42,742,432
2031	414,190	1,374,824	6,365,838	5,530,650	1,569,976	3,538,331	10,954,618	5,771,595	7,695,005	43,215,027
2032	418,069	1,386,862	6,429,102	5,589,705	1,586,075	3,584,017	11,079,279	5,830,447	7,786,607	43,690,163
2033	422,030	1,399,034	6,492,615	5,649,254	1,602,268	3,630,181	11,204,579	5,889,915	7,878,858	44,168,734
2034	426,105	1,411,619	6,557,679	5,710,596	1,618,928	3,677,796	11,332,439	5,951,105	7,974,123	44,660,390
2035	430,317	1,424,648	6,624,420	5,774,315	1,636,131	3,727,388	11,464,159	6,014,332	8,072,715	45,168,425
2036	434,574	1,437,770	6,691,538	5,838,463	1,653,394	3,777,253	11,596,841	6,077,859	8,172,496	45,680,188
2037	438,828	1,450,730	6,757,808	5,901,555	1,670,452	3,826,798	11,727,590	6,141,060	8,271,557	46,186,378
2038	443,132	1,463,839	6,824,751	5,965,340	1,687,721	3,876,557	11,860,047	6,204,519	8,371,178	46,697,084
2039	447,520	1,477,153	6,892,125	6,029,579	1,705,102	3,926,969	11,993,903	6,268,446	8,471,472	47,212,269
2040	451,910	1,490,539	6,959,480	6,094,171	1,722,542	3,978,092	12,128,004	6,332,892	8,572,708	47,730,338
2041	456,389	1,503,808	7,026,853	6,158,072	1,739,861	4,029,148	12,261,956	6,396,913	8,673,419	48,246,419
2042	460,923	1,517,161	7,094,197	6,222,323	1,757,241	4,080,725	12,396,474	6,461,624	8,774,225	48,764,893
2043	465,455	1,530,800	7,162,552	6,287,950	1,774,947	4,133,235	12,533,312	6,527,472	8,877,190	49,292,913
2044	470,060	1,544,728	7,232,127	6,354,857	1,792,884	4,186,662	12,672,637	6,594,389	8,982,276	49,830,620
2045	474,746	1,558,865	7,302,332	6,422,650	1,811,048	4,241,076	12,813,711	6,662,057	9,088,816	50,375,301

Table S-10 Enplanements Summary by Region*

Fiscal Year	Alaska (AAL)	Central (ACE)	Eastern (AEA)	Great Lakes (AGL)	New England (ANE)	Northwest Mountain (ANM)	Southern (ASO)	Southwest (ASW)	Western Pacific (AWP)	National Total
Historical										
2012	4,335,234	16,347,060	119,867,749	98,413,657	22,242,987	67,863,588	170,789,344	82,374,948	148,818,946	731,053,513
2013	4,389,781	16,332,429	120,114,631	98,066,458	22,393,108	68,258,672	170,889,088	83,571,431	150,320,923	734,336,521
2014	4,461,781	16,562,601	121,874,137	100,740,204	23,253,706	70,663,874	173,781,263	87,326,650	154,865,661	753,529,877
2015	4,703,444	16,798,291	126,384,752	104,548,263	23,938,219	73,875,267	181,830,702	92,167,320	162,142,775	786,389,033
Forecast										
2016	4,827,802	17,670,212	131,304,591	108,914,016	25,256,101	79,512,215	190,373,606	94,288,053	170,628,599	822,775,195
2017	4,705,710	19,698,775	134,577,048	112,478,853	27,160,604	85,575,086	197,474,522	94,859,073	181,379,583	857,909,254
2018	4,784,251	20,100,790	137,932,722	114,811,072	27,771,609	87,762,500	202,226,835	97,285,124	185,862,508	878,537,411
2019	4,855,977	20,462,991	142,231,675	116,930,351	28,335,733	89,782,287	206,656,681	99,547,964	189,991,206	898,794,865
2020	4,928,088	20,825,893	146,467,226	119,022,875	28,887,999	91,757,565	211,008,525	101,675,727	193,996,889	918,570,787
2021	4,996,352	21,188,730	150,643,429	121,080,274	29,439,755	93,724,154	215,339,575	103,770,482	198,010,163	938,192,914
2022	5,061,441	21,539,220	153,606,370	123,084,529	29,985,613	95,646,803	219,601,995	105,814,078	201,940,416	956,280,465
2023	5,124,299	21,883,012	156,292,628	125,057,676	30,530,891	97,535,271	223,848,608	107,838,469	205,771,838	973,882,692
2024	5,185,590	22,215,304	158,808,265	126,953,165	31,060,870	99,351,928	227,969,911	109,811,655	209,495,088	990,851,776
2025	5,249,187	22,555,934	161,357,315	128,896,678	31,598,912	101,212,052	232,154,448	111,837,259	213,271,334	1,008,133,119
2026	5,316,298	22,924,989	164,022,323	130,989,036	32,181,420	103,202,497	236,614,494	113,989,640	217,318,271	1,026,558,968
2027	5,383,940	23,295,910	166,694,583	133,083,715	32,764,444	105,191,539	241,128,730	116,135,155	221,361,224	1,045,039,240
2028	5,453,807	23,669,869	169,362,077	135,186,754	33,347,261	107,183,219	245,609,371	118,309,189	225,452,573	1,063,574,120
2029	5,524,745	24,055,752	172,085,266	137,347,990	33,946,730	109,228,839	250,208,037	120,533,141	229,663,072	1,082,593,572
2030	5,595,626	24,443,491	174,797,249	139,512,441	34,546,369	111,279,528	254,784,459	122,764,686	233,883,960	1,101,607,809
2031	5,667,452	24,830,809	177,523,930	141,669,019	35,148,325	113,335,668	259,405,892	125,004,736	238,110,688	1,120,696,519
2032	5,738,965	25,215,305	180,256,323	143,833,518	35,751,269	115,399,748	264,089,308	127,253,894	242,346,680	1,139,885,010
2033	5,812,605	25,604,470	182,996,930	146,017,022	36,357,709	117,484,247	268,788,944	129,529,928	246,606,058	1,159,197,913
2034	5,889,367	26,009,768	185,799,565	148,270,587	36,983,096	119,639,920	273,583,629	131,880,980	251,016,246	1,179,073,158
2035	5,970,019	26,432,048	188,665,521	150,620,922	37,629,724	121,890,455	278,535,056	134,319,819	255,587,691	1,199,651,255
2036	6,051,554	26,857,503	191,541,213	152,989,317	38,278,018	124,151,509	283,524,303	136,768,915	260,217,335	1,220,379,667
2037	6,132,596	27,275,238	194,381,784	155,310,553	38,918,554	126,394,098	288,411,997	139,200,991	264,804,053	1,240,829,864
2038	6,214,713	27,698,078	197,248,599	157,657,993	39,570,812	128,641,860	293,373,699	141,640,894	269,409,316	1,261,455,964
2039	6,298,715	28,128,973	200,129,386	160,021,711	40,227,031	130,917,521	298,390,454	144,098,306	274,037,794	1,282,249,891
2040	6,382,603	28,562,223	203,005,390	162,396,785	40,885,059	133,220,426	303,399,060	146,576,330	278,707,330	1,303,135,206
2041	6,468,756	28,989,225	205,882,099	164,741,276	41,536,916	135,517,061	308,403,331	149,032,621	283,342,172	1,323,913,457
2042	6,556,177	29,418,745	208,753,399	167,099,053	42,190,575	137,833,194	313,423,569	151,518,628	287,967,951	1,344,761,291
2043	6,643,180	29,859,777	211,661,596	169,512,643	42,856,813	140,191,248	318,536,592	154,051,690	292,705,704	1,366,019,243
2044	6,732,168	30,312,004	214,618,850	171,976,485	43,531,064	142,591,773	323,751,630	156,629,403	297,553,898	1,387,697,275
2045	6,823,094	30,772,041	217,595,111	174,473,488	44,214,003	145,036,090	329,033,831	159,235,994	302,470,620	1,409,654,272

*Includes both tower and non-tower airports.

Table S-11 Based Aircraft Summary by Region*

Fiscal Year						Northwest			Western		National Total
	Alaska (AAL)	Central (ACE)	Eastern (AEA)	Great Lakes (AGL)	New England (ANE)	Mountain (ANM)	Southern (ASO)	Southwest (ASW)	Pacific (AWP)		
Historical											
2012	4,567	9,361	15,378	26,593	5,803	21,998	30,202	21,312	28,119	163,333	
2013	4,698	9,714	15,698	27,262	5,985	22,507	31,163	21,537	28,389	166,953	
2014	4,728	9,927	15,841	27,572	6,291	22,814	32,190	22,530	28,482	170,375	
2015	4,656	9,569	14,929	27,027	5,729	22,258	30,814	21,663	27,349	163,994	
Forecast											
2016	4,673	9,606	15,085	27,223	5,788	22,506	31,094	21,880	27,625	165,480	
2017	4,685	9,647	15,201	27,393	5,845	22,720	31,348	22,100	27,883	166,822	
2018	4,701	9,701	15,348	27,582	5,897	22,968	31,606	22,307	28,137	168,247	
2019	4,717	9,744	15,470	27,760	5,953	23,178	31,859	22,519	28,400	169,600	
2020	4,729	9,782	15,587	27,952	6,012	23,403	32,107	22,718	28,657	170,947	
2021	4,746	9,832	15,731	28,135	6,072	23,660	32,392	22,952	28,919	172,439	
2022	4,761	9,882	15,865	28,332	6,122	23,896	32,668	23,182	29,195	173,903	
2023	4,777	9,949	16,008	28,522	6,191	24,154	32,964	23,412	29,491	175,468	
2024	4,795	10,000	16,126	28,698	6,252	24,377	33,236	23,631	29,765	176,880	
2025	4,809	10,051	16,240	28,878	6,310	24,604	33,496	23,846	30,039	178,273	
2026	4,824	10,100	16,355	29,050	6,369	24,824	33,758	24,065	30,315	179,660	
2027	4,839	10,150	16,480	29,230	6,429	25,046	34,026	24,283	30,593	181,076	
2028	4,854	10,202	16,600	29,401	6,488	25,271	34,291	24,502	30,875	182,484	
2029	4,869	10,253	16,716	29,586	6,548	25,495	34,563	24,725	31,159	183,914	
2030	4,884	10,306	16,841	29,764	6,608	25,720	34,843	24,966	31,445	185,377	
2031	4,899	10,357	16,968	29,943	6,667	25,947	35,115	25,201	31,730	186,827	
2032	4,914	10,408	17,091	30,122	6,728	26,174	35,388	25,438	32,017	188,280	
2033	4,929	10,462	17,214	30,300	6,789	26,404	35,669	25,673	32,310	189,750	
2034	4,944	10,513	17,335	30,484	6,852	26,637	35,951	25,917	32,609	191,242	
2035	4,959	10,567	17,464	30,664	6,914	26,876	36,239	26,170	32,913	192,766	
2036	4,974	10,619	17,588	30,844	6,977	27,117	36,525	26,427	33,223	194,294	
2037	4,989	10,672	17,720	31,025	7,042	27,359	36,825	26,688	33,536	195,856	
2038	5,004	10,728	17,850	31,212	7,110	27,604	37,126	26,951	33,852	197,437	
2039	5,019	10,785	17,980	31,400	7,179	27,851	37,426	27,219	34,173	199,032	
2040	5,034	10,843	18,113	31,586	7,250	28,104	37,739	27,490	34,496	200,655	
2041	5,049	10,900	18,247	31,769	7,321	28,346	38,047	27,759	34,821	202,259	
2042	5,064	10,959	18,382	31,953	7,394	28,602	38,365	28,030	35,148	203,897	
2043	5,079	11,018	18,519	32,137	7,467	28,863	38,680	28,308	35,479	205,550	
2044	5,094	11,078	18,655	32,322	7,543	29,135	39,011	28,596	35,817	207,251	
2045	5,110	11,139	18,795	32,509	7,620	29,408	39,346	28,889	36,161	208,977	

*Includes both tower and non-tower airports.

Appendix A: Description of Activity Measures

Air Carrier Enplanements

These data summarize domestic enplaned passengers (originations and connections) of U.S. commercial air carriers and international enplanements for both U.S. and foreign flag carriers submitted to the U.S. Department of Transportation (DOT), Bureau of Transportation Statistics (BTS) on T-100 reports. Estimates include both scheduled and non-scheduled enplaned passengers.

Regional Enplanements

Starting in FY 2003, FAA includes in the regional category enplanements for those airlines whose primary function is to provide passenger feed to mainline carriers, regardless of aircraft size. As of October 2002, all scheduled and non-scheduled operations using aircraft with 10 or more seats to transport regional passengers must report on T-100.

Historic enplanement data includes originating passengers on scheduled commuter or regional carriers as reported on DOT Form 41 and 298-C; where possible, adjustments were made to include connecting passengers. Historically, Form 298-C included carriers operating at least five scheduled round trips per week whose entire fleet consists of aircraft having 60 seats or less.

Aircraft Operations

FAA air traffic controllers count landings and takeoffs at FAA towered airports. Controllers employed by an FAA contractor count operations at FAA contract towers. At non-FAA facilities, operations counts represent an estimate.

Air carrier operations represent either takeoffs or landings of commercial aircraft with seating capacity of more than 60 seats.

Commuter/air taxi operations are one category. Commuter operations include takeoffs and landings by aircraft with 60 or fewer seats that transport regional passengers on scheduled commercial flights. Air taxi operations include takeoffs and landings by aircraft with 60 or fewer seats conducted on non-scheduled or for-hire flights.

Itinerant general aviation and local civil operations represent all civil aviation aircraft takeoffs and landings not classified as commercial. Military operations represent take-offs and landings by military aircraft. Operations are either itinerant or local flights.

Local Operations

Aircraft operating in the traffic pattern or within sight of the tower, or aircraft known to be departing or arriving from flight in local practice areas, or aircraft executing practice instrument approaches at the airport.

Itinerant Operations

FAA reports all aircraft operations other than local operations as itinerant. Essentially, these data represent takeoffs and landings of aircraft going from one airport to another.

Tracon Operations

These data include arrivals, departures, and overflights conducted by an FAA radar approach control facility for aircraft under Instrument Flight Rule (IFR) or Visual Flight Rule (VFR) plans.

Overflights

These data include operations of aircraft in transit through the approach control facility airspace.

Appendix B: List of FAA Towers by Hub Size and FAA Contract Towers

Table B-1 List of Large Hub Towers

Location Identifier	Region	Airport Name	City, State
ATL	ASO	HARTSFIELD - JACKSON ATLANTA INTL	ATLANTA, GA
BOS	ANE	GENERAL EDWARD LAWRENCE LOGAN INTL	BOSTON, MA
BWI	AEA	BALTIMORE/WASHINGTON INTL THURGOOD MARSHALL	BALTIMORE, MD
CLT	ASO	CHARLOTTE/DOUGLAS INTL	CHARLOTTE, NC
DCA	AEA	RONALD REAGAN WASHINGTON NATIONAL	WASHINGTON, DC
DEN	ANM	DENVER INTL	DENVER, CO
DFW	ASW	DALLAS/FORT WORTH INTL	DALLAS-FORT WORTH, TX
DTW	AGL	DETROIT METROPOLITAN WAYNE COUNTY	DETROIT, MI
EWR	AEA	NEWARK LIBERTY INTL	NEWARK, NJ
FLL	ASO	FORT LAUDERDALE/HOLLYWOOD INTL	FORT LAUDERDALE, FL
HNL	AWP	HONOLULU INTL	HONOLULU, HI
IAD	AEA	WASHINGTON DULLES INTL	WASHINGTON, DC
IAH	ASW	GEORGE BUSH INTERCONTINENTAL/HOUSTON	HOUSTON, TX
JFK	AEA	JOHN F KENNEDY INTL	NEW YORK, NY
LAS	AWP	MC CARRAN INTL	LAS VEGAS, NV
LAX	AWP	LOS ANGELES INTL	LOS ANGELES, CA
LGA	AEA	LAGUARDIA	NEW YORK, NY
MCO	ASO	ORLANDO INTL	ORLANDO, FL
MDW	AGL	CHICAGO MIDWAY INTL	CHICAGO, IL
MIA	ASO	MIAMI INTL	MIAMI, FL
MSP	AGL	MINNEAPOLIS-ST PAUL INTL/WOLD-CHAMBERLAIN	MINNEAPOLIS, MN
ORD	AGL	CHICAGO O'HARE INTL	CHICAGO, IL
PDX	ANM	PORTLAND INTL	PORTLAND, OR
PHL	AEA	PHILADELPHIA INTL	PHILADELPHIA, PA
PHX	AWP	PHOENIX SKY HARBOR INTL	PHOENIX, AZ
SAN	AWP	SAN DIEGO INTL	SAN DIEGO, CA
SEA	ANM	SEATTLE-TACOMA INTL	SEATTLE, WA
SFO	AWP	SAN FRANCISCO INTL	SAN FRANCISCO, CA
SLC	ANM	SALT LAKE CITY INTL	SALT LAKE CITY, UT
TPA	ASO	TAMPA INTL	TAMPA, FL

Listed 30 Airports.

Table B-2 List of Medium Hub Towers

Location Identifier	Region	Airport Name	City, State
ABQ	ASW	ALBUQUERQUE INTL SUNPORT	ALBUQUERQUE, NM
ANC	AAL	TED STEVENS ANCHORAGE INTL	ANCHORAGE, AK
AUS	ASW	AUSTIN-BERGSTROM INTL	AUSTIN, TX
BDL	ANE	BRADLEY INTL	WINDSOR LOCKS, CT
BNA	ASO	NASHVILLE INTL	NASHVILLE, TN
BUF	AEA	BUFFALO NIAGARA INTL	BUFFALO, NY
BUR	AWP	BOB HOPE	BURBANK, CA
CLE	AGL	CLEVELAND-HOPKINS INTL	CLEVELAND, OH
CMH	AGL	PORT COLUMBUS INTL	COLUMBUS, OH
CVG	ASO	CINCINNATI/NORTHERN KENTUCKY INTL	COVINGTON , KY
DAL	ASW	DALLAS LOVE FIELD	DALLAS, TX
HOU	ASW	WILLIAM P HOBBY	HOUSTON, TX
IND	AGL	INDIANAPOLIS INTL	INDIANAPOLIS, IN
JAX	ASO	JACKSONVILLE INTL	JACKSONVILLE, FL
MCI	ACE	KANSAS CITY INTL	KANSAS CITY, MO
MKE	AGL	GENERAL MITCHELL INTL	MILWAUKEE, WI
MSY	ASW	LOUIS ARMSTRONG NEW ORLEANS INTL	NEW ORLEANS, LA
OAK	AWP	METROPOLITAN OAKLAND INTL	OAKLAND, CA
OGG	AWP	KAHULUI	KAHULUI, HI
OMA	ACE	EPPLEY AIRFIELD	OMAHA, NE
ONT	AWP	ONTARIO INTL	ONTARIO, CA
PBI	ASO	PALM BEACH INTL	WEST PALM BEACH, FL
PIT	AEA	PITTSBURGH INTL	PITTSBURGH, PA
RDU	ASO	RALEIGH-DURHAM INTL	RALEIGH/DURHAM, NC
RSW	ASO	SOUTHWEST FLORIDA INTL	FORT MYERS, FL
SAT	ASW	SAN ANTONIO INTL	SAN ANTONIO, TX
SJC	AWP	NORMAN Y MINETA SAN JOSE INTL	SAN JOSE, CA
SJU	ASO	LUIS MUNOZ MARIN INTL	SAN JUAN, PR
SMF	AWP	SACRAMENTO INTL	SACRAMENTO, CA
SNA	AWP	JOHN WAYNE AIRPORT-ORANGE COUNTY	SANTA ANA, CA
STL	ACE	LAMBERT-ST LOUIS INTL	ST LOUIS, MO

Listed 31 Airports.

Table B-3 List of Small Hub Towers

Location Identifier	Region	Airport Name	City, State
ACY	AEA	ATLANTIC CITY INTL	ATLANTIC CITY, NJ
ALB	AEA	ALBANY INTL	ALBANY, NY
AVL	ASO	ASHEVILLE RGNL	ASHEVILLE, NC
BHM	ASO	BIRMINGHAM-SHUTTLESWORTH INTL	BIRMINGHAM, AL
BIL	ANM	BILLINGS LOGAN INTL	BILLINGS, MT
BLI	ANM	BELLINGHAM INTL	BELLINGHAM, WA
BOI	ANM	BOISE AIR TERMINAL/GOWEN FLD	BOISE, ID
BTV	ANE	BURLINGTON INTL	BURLINGTON, VT
BZN	ANM	BOZEMAN YELLOWSTONE INTL	BOZEMAN, MT
CAE	ASO	COLUMBIA METROPOLITAN	COLUMBIA, SC
CAK	AGL	AKRON-CANTON RGNL	AKRON, OH
CHA	ASO	LOVELL FIELD	CHATTANOOGA, TN
CHS	ASO	CHARLESTON AFB/INTL	CHARLESTON, SC
CID	ACE	THE EASTERN IOWA	CEDAR RAPIDS, IA
COS	ANM	CITY OF COLORADO SPRINGS MUNI	COLORADO SPRINGS, CO
DAY	AGL	JAMES M COX DAYTON INTL	DAYTON, OH
DSM	ACE	DES MOINES INTL	DES MOINES, IA
ECP	ASO	NORTHWEST FLORIDA BEACHES INTL	PANAMA CITY, FL
ELP	ASW	EL PASO INTL	EL PASO, TX
EUG	ANM	MAHLON SWEET FIELD	EUGENE, OR
FAI	AAL	FAIRBANKS INTL	FAIRBANKS, AK
FAR	AGL	HECTOR INTL	FARGO, ND
FAT	AWP	FRESNO YOSEMITE INTL	FRESNO, CA
FNT	AGL	BISHOP INTL	FLINT, MI
FSD	AGL	JOE FOSS FIELD	SIOUX FALLS, SD
GEG	ANM	SPOKANE INTL	SPOKANE, WA
GRR	AGL	GERALD R FORD INTL	GRAND RAPIDS, MI
GSN	AWP	FRANCISCO C ADA/SAIPAN INTL	SAIPAN ISLAND, MP
GSO	ASO	PIEDMONT TRIAD INTL	GREENSBORO, NC
GSP	ASO	GREENVILLE SPARTANBURG INTL	GREER, SC
GUM	AWP	GUAM INTL	GUAM, GU
HPN	AEA	WESTCHESTER COUNTY	WHITE PLAINS, NY
HSV	ASO	HUNTSVILLE INTL-CARL T JONES FIELD	HUNTSVILLE, AL
ICT	ACE	WICHITA DWIGHT D EISENHOWER NATIONAL	WICHITA, KS
ISP	AEA	LONG ISLAND MAC ARTHUR	NEW YORK, NY
ITO	AWP	HILO INTL	HILO, HI
IWA	AWP	PHOENIX-MESA GATEWAY	PHOENIX, AZ
JAN	ASO	JACKSON-MEDGAR WILEY EVERS INTL	JACKSON, MS
KOA	AWP	KONA INTL AT KEAHOLE	KAILUA/KONA, HI
LBB	ASW	LUBBOCK PRESTON SMITH INTL	LUBBOCK, TX
LEX	ASO	BLUE GRASS	LEXINGTON, KY
LGB	AWP	LONG BEACH /DAUGHERTY FIELD/	LONG BEACH, CA
LIH	AWP	LIHUE	LIHUE, HI
LIT	ASW	BILL AND HILLARY CLINTON NATIONAL/ADAMS FIELD	LITTLE ROCK, AR
MAF	ASW	MIDLAND INTL	MIDLAND, TX
MDT	AEA	HARRISBURG INTL	HARRISBURG, PA
MEM	ASO	MEMPHIS INTL	MEMPHIS, TN
MFE	ASW	MC ALLEN MILLER INTL	MC ALLEN, TX
MHT	ANE	MANCHESTER	MANCHESTER, NH
MSN	AGL	DANE COUNTY RGNL-TRUAX FIELD	MADISON, WI

Table B-3 List of Small Hub Towers

Location Identifier	Region	Airport Name	City, State
MYR	ASO	MYRTLE BEACH INTL	MYRTLE BEACH, SC
OKC	ASW	WILL ROGERS WORLD	OKLAHOMA CITY, OK
ORF	AEA	NORFOLK INTL	NORFOLK, VA
PGD	ASO	PUNTA GORDA	PUNTA GORDA, FL
PIE	ASO	ST PETE-CLEARWATER INTL	ST PETERSBURG-CLEARWATER, FL
PNS	ASO	PENSACOLA INTL	PENSACOLA, FL
PSP	AWP	PALM SPRINGS INTL	PALM SPRINGS, CA
PVD	ANE	THEODORE FRANCIS GREEN STATE	PROVIDENCE, RI
PWM	ANE	PORTLAND INTL JETPORT	PORTLAND, ME
RIC	AEA	RICHMOND INTL	RICHMOND, VA
RNO	AWP	RENO/TAHOE INTL	RENO, NV
ROC	AEA	GREATER ROCHESTER INTL	ROCHESTER, NY
SAV	ASO	SAVANNAH/HILTON HEAD INTL	SAVANNAH, GA
SDF	ASO	LOUISVILLE INTL-STANDIFORD FIELD	LOUISVILLE, KY
SFB	ASO	ORLANDO SANFORD INTL	ORLANDO, FL
SGF	ACE	SPRINGFIELD-BRANSON NATIONAL	SPRINGFIELD, MO
SRQ	ASO	SARASOTA/BRADENTON INTL	SARASOTA/BRADENTON , FL
STT	ASO	CYRIL E KING	CHARLOTTE AMALIE, VI
SYR	AEA	SYRACUSE HANCOCK INTL	SYRACUSE, NY
TTN	AEA	TRENTON MERCER	TRENTON, NJ
TUL	ASW	TULSA INTL	TULSA, OK
TUS	AWP	TUCSON INTL	TUCSON, AZ
TYS	ASO	MC GHEE TYSON	KNOXVILLE, TN
XNA	ASW	NORTHWEST ARKANSAS RGNL	FAYETTEVILLE/SPRINGDALE/, AR

Listed 74 Airports.

Table B-4 List of Non-Hub Towers

Location Identifier	Region	Airport Name	City, State
ABE	AEA	LEHIGH VALLEY INTL	ALLENTOWN, PA
ABI	ASW	ABILENE RGNL	ABILENE, TX
ABY	ASO	SOUTHWEST GEORGIA RGNL	ALBANY, GA
ACK	ANE	NANTUCKET MEMORIAL	NANTUCKET, MA
ACT	ASW	WACO RGNL	WACO, TX
ADM	ASW	ARDMORE MUNI	ARDMORE, OK
ADQ	AAL	KODIAK	KODIAK, AK
ADS	ASW	ADDISON	DALLAS, TX
ADW	AEA	JOINT BASE ANDREWS	CAMP SPRINGS, MD
AEG	ASW	DOUBLE EAGLE II	ALBUQUERQUE, NM
AEX	ASW	ALEXANDRIA INTL	ALEXANDRIA, LA
AFW	ASW	FORT WORTH ALLIANCE	FORT WORTH, TX
AGC	AEA	ALLEGHENY COUNTY	PITTSBURGH, PA
AGS	ASO	AUGUSTA RGNL AT BUSH FIELD	AUGUSTA, GA
AHN	ASO	ATHENS/BEN EPPS	ATHENS, GA
AKN	AAL	KING SALMON	KING SALMON, AK
ALN	AGL	ST LOUIS RGNL	ALTON/ST LOUIS, IL
ALO	ACE	WATERLOO RGNL	WATERLOO, IA
ALW	ANM	WALLA WALLA RGNL	WALLA WALLA, WA
AMA	ASW	RICK HUSBAND AMARILLO INTL	AMARILLO, TX
ANE	AGL	ANOKA COUNTY-BLAINE ARPT(JANES FIELD)	MINNEAPOLIS, MN
APA	ANM	CENTENNIAL	DENVER, CO
APC	AWP	NAPA COUNTY	NAPA, CA
APF	ASO	NAPLES MUNI	NAPLES, FL
ARA	ASW	ACADIANA RGNL	NEW IBERIA, LA
ARB	AGL	ANN ARBOR MUNI	ANN ARBOR, MI
ARR	AGL	AURORA MUNI	CHICAGO/AURORA, IL
ASE	ANM	ASPEN-PITKIN CO/SARDY FIELD	ASPEN, CO
ASG	ASW	SPRINGDALE MUNI	SPRINGDALE, AR
ASH	ANE	BOIRE FIELD	NASHUA, NH
ATW	AGL	APPLETON INTL	APPLETON, WI
AVP	AEA	WILKES-BARRE/SCRANTON INTL	WILKES-BARRE/SCRANTON, PA
AZO	AGL	KALAMAZOO/BATTLE CREEK INTL	KALAMAZOO, MI
BAF	ANE	WESTFIELD-BARNES RGNL	WESTFIELD/SPRINGFIELD, MA
BAK	AGL	COLUMBUS MUNI	COLUMBUS, IN
BAZ	ASW	NEW BRAUNFELS RGNL	NEW BRAUNFELS, TX
BBG	ACE	BRANSON	BRANSON, MO
BCT	ASO	BOCA RATON	BOCA RATON, FL
BDR	ANE	IGOR I SIKORSKY MEMORIAL	BRIDGEPORT, CT
BED	ANE	LAURENCE G HANSCOM FLD	BEDFORD, MA
BET	AAL	BETHEL	BETHEL, AK
BFI	ANM	BOEING FIELD/KING COUNTY INTL	SEATTLE, WA
BFL	AWP	MEADOWS FIELD	BAKERSFIELD, CA
BFM	ASO	MOBILE DOWNTOWN	MOBILE, AL
BGM	AEA	GREATER BINGHAMTON/EDWIN A LINK FIELD	BINGHAMTON, NY
BGR	ANE	BANGOR INTL	BANGOR, ME
BIS	AGL	BISMARCK MUNI	BISMARCK, ND
BJC	ANM	ROCKY MOUNTAIN METROPOLITAN	DENVER, CO
BKL	AGL	BURKE LAKEFRONT	CLEVELAND, OH
BKV	ASO	BROOKSVILLE-TAMPA BAY RGNL	BROOKSVILLE, FL
BMG	AGL	MONROE COUNTY	BLOOMINGTON, IN
BMI	AGL	CENTRAL IL RGNL ARPT AT BLOOMINGTON-NORMAL	BLOOMINGTON/NORMAL, IL
BPT	ASW	JACK BROOKS RGNL	BEAUMONT/PORT ARTHUR, TX
BQN	ASO	RAFAEL HERNANDEZ	AGUADILLA, PR
BRO	ASW	BROWNSVILLE/SOUTH PADRE ISLAND INTL	BROWNSVILLE, TX

Table B-4 List of Non-Hub Towers

Location Identifier	Region	Airport Name	City, State
BTL	AGL	W K KELLOGG	BATTLE CREEK, MI
BTR	ASW	BATON ROUGE METROPOLITAN, RYAN FIELD	BATON ROUGE, LA
BVY	ANE	BEVERLY MUNI	BEVERLY, MA
CCR	AWP	BUCHANAN FIELD	CONCORD, CA
CDW	AEA	ESSEX COUNTY	CALDWELL, NJ
CGF	AGL	CUYAHOGA COUNTY	CLEVELAND, OH
CHD	AWP	CHANDLER MUNI	CHANDLER, AZ
CHO	AEA	CHARLOTTESVILLE-ALBEMARLE	CHARLOTTESVILLE, VA
CIC	AWP	CHICO MUNI	CHICO, CA
CKB	AEA	NORTH CENTRAL WEST VIRGINIA	CLARKSBURG, WV
CLL	ASW	EASTERWOOD FIELD	COLLEGE STATION, TX
CMA	AWP	CAMARILLO	CAMARILLO, CA
CMI	AGL	UNIVERSITY OF ILLINOIS-WILLARD	CHAMPAIGN/URBANA , IL
CNO	AWP	CHINO	CHINO, CA
CNW	ASW	TSTC WACO	WACO, TX
COU	ACE	COLUMBIA RGNL	COLUMBIA, MO
CPR	ANM	CASPER/NATRONA COUNTY INTL	CASPER, WY
CPS	AGL	ST LOUIS DOWNTOWN	CAHOKIA/ST LOUIS, IL
CRE	ASO	GRAND STRAND	NORTH MYRTLE BEACH, SC
CRG	ASO	JACKSONVILLE EXECUTIVE AT CRAIG	JACKSONVILLE, FL
CRP	ASW	CORPUS CHRISTI INTL	CORPUS CHRISTI, TX
CRQ	AWP	MC CLELLAN-PALOMAR	CARLSBAD, CA
CRW	AEA	YEAGER	CHARLESTON, WV
CSG	ASO	COLUMBUS	COLUMBUS, GA
CWA	AGL	CENTRAL WISCONSIN	MOSINEE, WI
CWF	ASW	CHENNAULT INTL	LAKE CHARLES, LA
CXO	ASW	LONE STAR EXECUTIVE	HOUSTON , TX
CXY	AEA	CAPITAL CITY	HARRISBURG, PA
CYS	ANM	CHEYENNE RGNL/JERRY OLSON FIELD	CHEYENNE, WY
DAB	ASO	DAYTONA BEACH INTL	DAYTONA BEACH, FL
DBQ	ACE	DUBUQUE RGNL	DUBUQUE, IA
DEC	AGL	DECATUR	DECATUR, IL
DET	AGL	COLEMAN A YOUNG MUNI	DETROIT, MI
DHN	ASO	DOTHAN RGNL	DOTHAN, AL
DLH	AGL	DULUTH INTL	DULUTH, MN
DPA	AGL	DUPAGE	CHICAGO/WEST CHICAGO , IL
DTN	ASW	SHREVEPORT DOWNTOWN	SHREVEPORT, LA
DTO	ASW	DENTON ENTERPRISE	DENTON, TX
DVT	AWP	PHOENIX DEER VALLEY	PHOENIX, AZ
DWH	ASW	DAVID WAYNE HOOKS MEMORIAL	HOUSTON, TX
DXR	ANE	DANBURY MUNI	DANBURY, CT
EAU	AGL	CHIPPEWA VALLEY RGNL	EAU CLAIRE, WI
EGE	ANM	EAGLE COUNTY RGNL	EAGLE, CO
ELM	AEA	ELMIRA/CORNING RGNL	ELMIRA/CORNING, NY
EMT	AWP	EL MONTE	EL MONTE, CA
ENA	AAL	KENAI MUNI	KENAI, AK
ENW	AGL	KENOSHA RGNL	KENOSHA, WI
ERI	AEA	ERIE INTL/TOM RIDGE FIELD	ERIE, PA
ESN	AEA	EASTON/NEWNAM FIELD	EASTON, MD
EVB	ASO	NEW SMYRNA BEACH MUNI	NEW SMYRNA BEACH, FL
EVV	AGL	EVANSVILLE RGNL	EVANSVILLE, IN
EWB	ANE	NEW BEDFORD RGNL	NEW BEDFORD, MA
EWN	ASO	COASTAL CAROLINA REGIONAL	NEW BERN, NC
EYW	ASO	KEY WEST INTL	KEY WEST, FL
FAY	ASO	FAYETTEVILLE RGNL/GRANNIS FIELD	FAYETTEVILLE, NC

Table B-4 List of Non-Hub Towers

Location Identifier	Region	Airport Name	City, State
FCM	AGL	FLYING CLOUD	MINNEAPOLIS, MN
FDK	AEA	FREDERICK MUNI	FREDERICK, MD
FFZ	AWP	FALCON FLD	MESA, AZ
FIN	ASO	FLAGLER COUNTY	PALM COAST, FL
FLG	AWP	FLAGSTAFF PULLIAM	FLAGSTAFF, AZ
FLO	ASO	FLORENCE RGNL	FLORENCE, SC
FMN	ASW	FOUR CORNERS RGNL	FARMINGTON, NM
FMY	ASO	PAGE FIELD	FORT MYERS, FL
FOE	ACE	FORBES FIELD	TOPEKA, KS
FOK	AEA	FRANCIS S GABRESKI	WESTHAMPTON BEACH, NY
FPR	ASO	ST LUCIE COUNTY INTL	FORT PIERCE, FL
FRG	AEA	REPUBLIC	FARMINGDALE, NY
FSM	ASW	FORT SMITH RGNL	FORT SMITH, AR
FTG	ANM	FRONT RANGE	DENVER, CO
FTW	ASW	FORT WORTH MEACHAM INTL	FORT WORTH, TX
FTY	ASO	FULTON COUNTY AIRPORT-BROWN FIELD	ATLANTA, GA
FUL	AWP	FULLERTON MUNI	FULLERTON, CA
FWA	AGL	FORT WAYNE INTL	FORT WAYNE, IN
FWS	ASW	FORT WORTH SPINKS	FORT WORTH, TX
FXE	ASO	FORT LAUDERDALE EXECUTIVE	FORT LAUDERDALE, FL
FYV	ASW	DRAKE FIELD	FAYETTEVILLE, AR
GCK	ACE	GARDEN CITY RGNL	GARDEN CITY, KS
GCN	AWP	GRAND CANYON NATIONAL PARK	GRAND CANYON, AZ
GEU	AWP	GLENDALE MUNI	GLENDALE, AZ
GFK	AGL	GRAND FORKS INTL	GRAND FORKS, ND
GGG	ASW	EAST TEXAS RGNL	LONGVIEW, TX
GJT	ANM	GRAND JUNCTION REGIONAL	GRAND JUNCTION, CO
GKY	ASW	ARLINGTON MUNI	ARLINGTON, TX
GLH	ASO	GREENVILLE MID-DELTA	GREENVILLE, MS
GLS	ASW	SCHOLES INTL AT GALVESTON	GALVESTON, TX
GMU	ASO	GREENVILLE DOWNTOWN	GREENVILLE, SC
GNV	ASO	GAINESVILLE RGNL	GAINESVILLE, FL
GON	ANE	GROTON-NEW LONDON	GROTON (NEW LONDON) , CT
GPI	ANM	GLACIER PARK INTL	KALISPELL , MT
GPM	ASW	GRAND PRAIRIE MUNI	GRAND PRAIRIE, TX
GPT	ASO	GULFPORT-BILOXI INTL	GULFPORT, MS
GRB	AGL	AUSTIN STRAUBEL INTL	GREEN BAY, WI
GRI	ACE	CENTRAL NEBRASKA RGNL	GRAND ISLAND, NE
GTF	ANM	GREAT FALLS INTL	GREAT FALLS, MT
GTR	ASO	GOLDEN TRIANGLE RGNL	COLUMBUS/W POINT/STARKVILLE , MS
GTU	ASW	GEORGETOWN MUNI	GEORGETOWN, TX
GYH	ASO	DONALDSON FIELD	GREENVILLE, SC
GYR	AWP	PHOENIX GOODYEAR	GOODYEAR, AZ
GYG	AGL	GARY/CHICAGO INTL	GARY, IN
HEF	AEA	MANASSAS RGNL/HARRY P DAVIS FIELD	WASHINGTON, DC
HFD	ANE	HARTFORD-BRAINARD	HARTFORD, CT
HGR	AEA	HAGERSTOWN RGNL-RICHARD A HENSON FLD	HAGERSTOWN, MD
HHR	AWP	JACK NORTHROP FIELD/HAWTHORNE MUNI	HAWTHORNE, CA
HIO	ANM	PORTLAND-HILLSBORO	PORTLAND, OR
HKS	ASO	HAWKINS FIELD	JACKSON, MS
HKY	ASO	HICKORY RGNL	HICKORY, NC
HLG	AEA	WHEELING OHIO CO	WHEELING, WV
HLN	ANM	HELENA RGNL	HELENA, MT
HND	AWP	HENDERSON EXECUTIVE	LAS VEGAS, NV
HOB	ASW	LEA COUNTY RGNL	HOBBS, NM

Table B-4 List of Non-Hub Towers

Location Identifier	Region	Airport Name	City, State
HQZ	ASW	MESQUITE METRO	MESQUITE, TX
HRL	ASW	VALLEY INTL	HARLINGEN, TX
HSA	ASO	STENNIS INTL	BAY ST LOUIS, MS
HTS	AEA	TRI-STATE/MILTON J FERGUSON FIELD	HUNTINGTON, WV
HUF	AGL	TERRE HAUTE INTL-HULMAN FIELD	TERRE HAUTE, IN
HUM	ASW	HOUMA-TERREBONNE	HOUMA, LA
HUT	ACE	HUTCHINSON RGNL	HUTCHINSON, KS
HVN	ANE	TWEED-NEW HAVEN	NEW HAVEN, CT
HWD	AWP	HAYWARD EXECUTIVE	HAYWARD, CA
HWO	ASO	NORTH PERRY	HOLLYWOOD, FL
HXD	ASO	HILTON HEAD	HILTON HEAD ISLAND, SC
HYA	ANE	BARNSTABLE MUNI-BOARDMAN/POLANDO FIELD	HYANNIS, MA
HYI	ASW	SAN MARCOS REGIONAL	AUSTIN, TX
IAG	AEA	NIAGARA FALLS INTL	NIAGARA FALLS, NY
IDA	ANM	IDAHO FALLS RGNL	IDAHO FALLS, ID
IFP	AWP	LAUGHLIN/BULLHEAD INTL	BULLHEAD CITY, AZ
ILG	AEA	NEW CASTLE	WILMINGTON, DE
ILM	ASO	WILMINGTON INTL	WILMINGTON, NC
INT	ASO	SMITH REYNOLDS	WINSTON SALEM, NC
IPT	AEA	WILLIAMSPORT RGNL	WILLIAMSPORT, PA
ISM	ASO	KISSIMMEE GATEWAY	ORLANDO, FL
ISO	ASO	KINSTON RGNL JETPORT AT STALLINGS FLD	KINSTON, NC
ITH	AEA	ITHACA TOMPKINS RGNL	ITHACA, NY
IXD	ACE	NEW CENTURY AIRCENTER	OLATHE, KS
JAC	ANM	JACKSON HOLE	JACKSON, WY
JEF	ACE	JEFFERSON CITY MEMORIAL	JEFFERSON CITY, MO
JLN	ACE	JOPLIN RGNL	JOPLIN, MO
JNU	AAL	JUNEAU INTL	JUNEAU, AK
JQF	ASO	CONCORD RGNL	CONCORD, NC
JRF	AWP	KALAELOA (JOHN RODGERS FIELD)	KAPOLEI, HI
JVL	AGL	SOUTHERN WISCONSIN RGNL	JANESVILLE, WI
JXN	AGL	JACKSON COUNTY-REYNOLDS FIELD	JACKSON, MI
LAF	AGL	PURDUE UNIVERSITY	LAFAYETTE, IN
LAL	ASO	LAKELAND LINDER RGNL	LAKELAND, FL
LAN	AGL	CAPITAL REGION INTL	LANSING, MI
LAW	ASW	LAWTON-FORT SILL RGNL	LAWTON, OK
LBE	AEA	ARNOLD PALMER RGNL	LATROBE, PA
LCH	ASW	LAKE CHARLES RGNL	LAKE CHARLES, LA
LEB	ANE	LEBANON MUNI	LEBANON, NH
LEE	ASO	LEESBURG INTL	LEESBURG, FL
LFT	ASW	LAFAYETTE RGNL/PAUL FOURNET FIELD	LAFAYETTE, LA
LMT	ANM	KLAMATH FALLS	KLAMATH FALLS, OR
LNK	ACE	LINCOLN	LINCOLN, NE
LNS	AEA	LANCASTER	LANCASTER, PA
LOU	ASO	BOWMAN FIELD	LOUISVILLE, KY
LRD	ASW	LAREDO INTL	LAREDO, TX
LSE	AGL	LA CROSSE RGNL	LA CROSSE, WI
LUK	AGL	CINCINNATI MUNI AIRPORT LUNKEN FIELD	CINCINNATI, OH
LVK	AWP	LIVERMORE MUNI	LIVERMORE, CA
LWB	AEA	GREENBRIER VALLEY	LEWISBURG, WV
LWM	ANE	LAWRENCE MUNI	LAWRENCE, MA
LWS	ANM	LEWISTON-NEZ PERCE COUNTY	LEWISTON, ID
LYH	AEA	LYNCHBURG RGNL/PRESTON GLENN FLD	LYNCHBURG, VA
LZU	ASO	GWINNETT COUNTY - BRISCOE FIELD	LAWRENCEVILLE, GA
MBS	AGL	MBS INTL	SAGINAW, MI

Table B-4 List of Non-Hub Towers

Location Identifier	Region	Airport Name	City, State
MCN	ASO	MIDDLE GEORGIA RGNL	MACON, GA
MDH	AGL	SOUTHERN ILLINOIS	CARBONDALE/MURPHYSBORO, IL
MEI	ASO	KEY FIELD	MERIDIAN, MS
MER	AWP	CASTLE	ATWATER, CA
MFD	AGL	MANSFIELD LAHM RGNL	MANSFIELD, OH
MFR	ANM	ROGUE VALLEY INTL - MEDFORD	MEDFORD, OR
MGM	ASO	MONTGOMERY RGNL (DANNELLY FIELD)	MONTGOMERY, AL
MGW	AEA	MORGANTOWN MUNI-WALTER L BILL HART FLD	MORGANTOWN, WV
MHK	ACE	MANHATTAN RGNL	MANHATTAN, KS
MHR	AWP	SACRAMENTO MATHER	SACRAMENTO, CA
MIC	AGL	CRYSTAL	MINNEAPOLIS, MN
MIE	AGL	DELAWARE COUNTY RGNL	MUNCIE, IN
MKC	ACE	CHARLES B WHEELER DOWNTOWN	KANSAS CITY, MO
MKG	AGL	MUSKEGON COUNTY	MUSKEGON, MI
MKK	AWP	MOLOKAI	KAUNAKAKAI, HI
MKL	ASO	MC KELLAR-SIPES RGNL	JACKSON, TN
MLB	ASO	MELBOURNE INTL	MELBOURNE, FL
MLI	AGL	QUAD CITY INTL	MOLINE, IL
MLU	ASW	MONROE RGNL	MONROE, LA
MMU	AEA	MORRISTOWN MUNI	MORRISTOWN, NJ
MOB	ASO	MOBILE RGNL	MOBILE, AL
MOD	AWP	MODESTO CITY-CO-HARRY SHAM FLD	MODESTO, CA
MOT	AGL	MINOT INTL	MINOT, ND
MQY	ASO	SMYRNA	SMYRNA, TN
MRI	AAL	MERRILL FIELD	ANCHORAGE, AK
MRY	AWP	MONTEREY RGNL	MONTEREY, CA
MSO	ANM	MISSOULA INTL	MISSOULA, MT
MTN	AEA	MARTIN STATE	BALTIMORE, MD
MVY	ANE	MARTHA'S VINEYARD	VINEYARD HAVEN, MA
MWA	AGL	WILLIAMSON COUNTY RGNL	MARION, IL
MWC	AGL	LAWRENCE J TIMMERMAN	MILWAUKEE, WI
MWH	ANM	GRANT CO INTL	MOSES LAKE, WA
MYF	AWP	MONTGOMERY FIELD	SAN DIEGO, CA
NEW	ASW	LAKEFRONT	NEW ORLEANS, LA
NQA	ASO	MILLINGTON RGNL JETPORT	MILLINGTON, TN
OCF	ASO	OCALA INTL-JIM TAYLOR FIELD	OCALA, FL
OGD	ANM	OGDEN-HINCKLEY	OGDEN, UT
OJC	ACE	JOHNSON COUNTY EXECUTIVE	OLATHE, KS
OLM	ANM	OLYMPIA RGNL	OLYMPIA, WA
OLV	ASO	OLIVE BRANCH	OLIVE BRANCH, MS
OMN	ASO	ORMOND BEACH MUNI	ORMOND BEACH, FL
OPF	ASO	OPA-LOCKA EXECUTIVE	MIAMI, FL
ORH	ANE	WORCESTER RGNL	WORCESTER, MA
ORL	ASO	EXECUTIVE	ORLANDO, FL
OSH	AGL	WITTMAN RGNL	OSHKOSH, WI
OSU	AGL	OHIO STATE UNIVERSITY	COLUMBUS, OH
OTH	ANM	SOUTHWEST OREGON RGNL	NORTH BEND, OR
OUN	ASW	UNIVERSITY OF OKLAHOMA WESTHEIMER	NORMAN, OK
OWB	ASO	OWENSBORO-DAVIESS COUNTY	OWENSBORO, KY
OWD	ANE	NORWOOD MEMORIAL	NORWOOD, MA
OXC	ANE	WATERBURY-OXFORD	OXFORD, CT
OXR	AWP	OXNARD	OXNARD, CA
PAE	ANM	SNOHOMISH COUNTY (PAINE FLD)	EVERETT, WA
PAH	ASO	BARKLEY RGNL	PADUCAH, KY
PAO	AWP	PALO ALTO	PALO ALTO, CA

Table B-4 List of Non-Hub Towers

Location Identifier	Region	Airport Name	City, State
PDK	ASO	DEKALB-PEACHTREE	ATLANTA, GA
PDT	ANM	EASTERN OREGON RGNL AT PENDLETON	PENDLETON, OR
PHF	AEA	NEWPORT NEWS/WILLIAMSBURG INTL	NEWPORT NEWS, VA
PIA	AGL	GENERAL DOWNING - PEORIA INTL	PEORIA, IL
PIH	ANM	POCATELLO RGNL	POCATELLO, ID
PKB	AEA	MID-OHIO VALLEY RGNL	PARKERSBURG, WV
PMD	AWP	PALMDALE USAF PLANT 42	PALMDALE, CA
PMP	ASO	POMPANO BEACH AIRPARK	POMPANO BEACH, FL
PNE	AEA	NORTHEAST PHILADELPHIA	PHILADELPHIA, PA
POC	AWP	BRACKETT FIELD	LA VERNE, CA
POU	AEA	DUTCHESS COUNTY	POUGHKEEPSIE, NY
PRC	AWP	ERNEST A LOVE FIELD	PRESCOTT, AZ
PSC	ANM	TRI-CITIES	PASCO, WA
PTK	AGL	OAKLAND COUNTY INTL	PONTIAC, MI
PUB	ANM	PUEBLO MEMORIAL	PUEBLO, CO
PVU	ANM	PROVO MUNI	PROVO, UT
PWA	ASW	WILEY POST	OKLAHOMA CITY, OK
PWK	AGL	CHICAGO EXECUTIVE	CHICAGO/PROSPECT HEIGHTS/WHEELING , IL
RAL	AWP	RIVERSIDE MUNI	RIVERSIDE, CA
RAP	AGL	RAPID CITY RGNL	RAPID CITY, SD
RBD	ASW	DALLAS EXECUTIVE	DALLAS, TX
RDD	AWP	REDDING MUNI	REDDING, CA
RDG	AEA	READING RGNL/CARL A SPAATZ FIELD	READING, PA
RDM	ANM	ROBERTS FIELD	REDMOND, OR
RFD	AGL	CHICAGO/ROCKFORD INTL	CHICAGO/ROCKFORD, IL
RHV	AWP	REID-HILLVIEW OF SANTA CLARA COUNTY	SAN JOSE, CA
RME	AEA	GRIFFISS INTL	ROME, NY
RNM	AWP	RAMONA	RAMONA, CA
RNT	ANM	RENTON MUNI	RENTON, WA
ROA	AEA	ROANOKE-BLACKSBURG RGNL/WOODRUM FIELD	ROANOKE, VA
ROG	ASW	ROGERS EXECUTIVE - CARTER FIELD	ROGERS, AR
ROW	ASW	ROSWELL INTL AIR CENTER	ROSWELL, NM
RST	AGL	ROCHESTER INTL	ROCHESTER, MN
RVS	ASW	RICHARD LLOYD JONES JR	TULSA, OK
RYN	AWP	RYAN FIELD	TUCSON, AZ
RYY	ASO	COBB COUNTY INTL-MCCOLLUM FIELD	ATLANTA, GA
SAC	AWP	SACRAMENTO EXECUTIVE	SACRAMENTO, CA
SAF	ASW	SANTA FE MUNI	SANTA FE, NM
SAW	AGL	SAWYER INTL	MARQUETTE, MI
SBA	AWP	SANTA BARBARA MUNI	SANTA BARBARA, CA
SBN	AGL	SOUTH BEND INTL	SOUTH BEND, IN
SBP	AWP	SAN LUIS COUNTY RGNL	SAN LUIS OBISPO, CA
SBY	AEA	SALISBURY-OCEAN CITY WICOMICO RGNL	SALISBURY, MD
SCK	AWP	STOCKTON METROPOLITAN	STOCKTON, CA
SDL	AWP	SCOTTSDALE	SCOTTSDALE, AZ
SDM	AWP	BROWN FIELD MUNI	SAN DIEGO, CA
SEE	AWP	GILLESPIE FIELD	SAN DIEGO/EL CAJON , CA
SFF	ANM	FELTS FIELD	SPOKANE, WA
SGJ	ASO	NORTHEAST FLORIDA RGNL	ST AUGUSTINE, FL
SGR	ASW	SUGAR LAND RGNL	HOUSTON, TX
SHV	ASW	SHREVEPORT RGNL	SHREVEPORT, LA
SIG	ASO	FERNANDO LUIS RIBAS DOMINICCI	SAN JUAN, PR
SJT	ASW	SAN ANGELO RGNL/MATHIS FIELD	SAN ANGELO, TX
SLE	ANM	MCNARY FLD	SALEM, OR
SLN	ACE	SALINA RGNL	SALINA, KS

Table B-4 List of Non-Hub Towers

Location Identifier	Region	Airport Name	City, State
SMO	AWP	SANTA MONICA MUNI	SANTA MONICA, CA
SMX	AWP	SANTA MARIA PUB/CAPT G ALLAN HANCOCK FLD	SANTA MARIA, CA
SNS	AWP	SALINAS MUNI	SALINAS, CA
SPG	ASO	ALBERT WHITTED	ST PETERSBURG, FL
SPI	AGL	ABRAHAM LINCOLN CAPITAL	SPRINGFIELD, IL
SQL	AWP	SAN CARLOS	SAN CARLOS, CA
SSF	ASW	STINSON MUNI	SAN ANTONIO, TX
STC	AGL	ST CLOUD RGNL	ST CLOUD, MN
STJ	ACE	ROSECRANS MEMORIAL	ST JOSEPH, MO
STP	AGL	ST PAUL DOWNTOWN HOLMAN FLD	ST PAUL, MN
STS	AWP	CHARLES M SCHULZ - SONOMA COUNTY	SANTA ROSA, CA
STX	ASO	HENRY E ROHLSEN	CHRISTIANSTED, VI
SUA	ASO	WITHAM FIELD	STUART, FL
SUN	ANM	FRIEDMAN MEMORIAL	HAILEY, ID
SUS	ACE	SPIRIT OF ST LOUIS	ST LOUIS, MO
SUX	ACE	SIOUX GATEWAY/COL BUD DAY FIELD	SIOUX CITY, IA
SWF	AEA	STEWART INTL	NEWBURGH, NY
SWO	ASW	STILLWATER RGNL	STILLWATER, OK
TCL	ASO	TUSCALOOSA RGNL	TUSCALOOSA, AL
TEB	AEA	TETERBORO	TETERBORO, NJ
TIW	ANM	TACOMA NARROWS	TACOMA, WA
TIX	ASO	SPACE COAST RGNL	TITUSVILLE, FL
TKI	ASW	MCKINNEY NATIONAL	DALLAS, TX
TLH	ASO	TALLAHASSEE INTL	TALLAHASSEE, FL
TMB	ASO	MIAMI EXECUTIVE	MIAMI, FL
TOA	AWP	ZAMPERINI FIELD	TORRANCE, CA
TOL	AGL	TOLEDO EXPRESS	TOLEDO, OH
TOP	ACE	PHILIP BILLARD MUNI	TOPEKA, KS
TRI	ASO	TRI-CITIES RGNL TN/VA	BRISTOL/JOHNSON/KINGSPORT, TN
TTD	ANM	PORTLAND-TROUTDALE	PORTLAND, OR
TUP	ASO	TUPELO RGNL	TUPELO, MS
TVC	AGL	CHERRY CAPITAL	TRAVERSE CITY, MI
TWF	ANM	JOSLIN FIELD - MAGIC VALLEY RGNL	TWIN FALLS, ID
TXK	ASW	TEXARKANA RGNL-WEBB FIELD	TEXARKANA, AR
TYR	ASW	TYLER POUNDS RGNL	TYLER, TX
TZR	AGL	BOLTON FIELD	COLUMBUS, OH
UAO	ANM	AURORA STATE	AURORA, OR
UES	AGL	WAUKESHA COUNTY	WAUKESHA, WI
UGN	AGL	WAUKEGAN RGNL	CHICAGO/WAUKEGAN, IL
UNV	AEA	UNIVERSITY PARK	STATE COLLEGE, PA
VCT	ASW	VICTORIA RGNL	VICTORIA, TX
VCV	AWP	SOUTHERN CALIFORNIA LOGISTICS	VICTORVILLE, CA
VGT	AWP	NORTH LAS VEGAS	LAS VEGAS, NV
VNY	AWP	VAN NUYS	VAN NUYS, CA
VQQ	ASO	CECIL	JACKSONVILLE, FL
VRB	ASO	VERO BEACH MUNI	VERO BEACH, FL
WDG	ASW	ENID WOODRING RGNL	ENID, OK
WHP	AWP	WHITEMAN	LOS ANGELES, CA
WJF	AWP	GENERAL WM J FOX AIRFIELD	LANCASTER, CA
YIP	AGL	WILLOW RUN	DETROIT, MI
YKM	ANM	YAKIMA AIR TERMINAL/MCALLISTER FIELD	YAKIMA, WA
YNG	AGL	YOUNGSTOWN-WARREN RGNL	YOUNGSTOWN/WARREN, OH

Listed 382 Airports.

Table B-5 List of FAA Contract Towers

Location Identifier	Region	Airport Name	City, State
ABY	ASO	SOUTHWEST GEORGIA RGNL	ALBANY, GA
ADM	ASW	ARDMORE MUNI	ARDMORE, OK
ADQ	AAL	KODIAK	KODIAK, AK
AEG	ASW	DOUBLE EAGLE II	ALBUQUERQUE, NM
AEX	ASW	ALEXANDRIA INTL	ALEXANDRIA, LA
AHN	ASO	ATHENS/BEN EPPS	ATHENS, GA
AKN	AAL	KING SALMON	KING SALMON, AK
ALN	AGL	ST LOUIS RGNL	ALTON/ST LOUIS, IL
ALW	ANM	WALLA WALLA RGNL	WALLA WALLA, WA
ANE	AGL	ANOKA COUNTY-BLAINE ARPT(JANES FIELD)	MINNEAPOLIS, MN
APF	ASO	NAPLES MUNI	NAPLES, FL
ARA	ASW	ACADIANA RGNL	NEW IBERIA, LA
ASG	ASW	SPRINGDALE MUNI	SPRINGDALE, AR
ASH	ANE	BOIRE FIELD	NASHUA, NH
ATW	AGL	APPLETON INTL	APPLETON, WI
BAF	ANE	WESTFIELD-BARNES RGNL	WESTFIELD/SPRINGFIELD, MA
BAK	AGL	COLUMBUS MUNI	COLUMBUS, IN
BAZ	ASW	NEW BRAUNFELS RGNL	NEW BRAUNFELS, TX
BBG	ACE	BRANSON	BRANSON, MO
BCT	ASO	BOCA RATON	BOCA RATON, FL
BDR	ANE	IGOR I SIKORSKY MEMORIAL	BRIDGEPORT, CT
BET	AAL	BETHEL	BETHEL, AK
BFM	ASO	MOBILE DOWNTOWN	MOBILE, AL
BKL	AGL	BURKE LAKEFRONT	CLEVELAND, OH
BKV	ASO	BROOKSVILLE-TAMPA BAY RGNL	BROOKSVILLE, FL
BLI	ANM	BELLINGHAM INTL	BELLINGHAM, WA
BMG	AGL	MONROE COUNTY	BLOOMINGTON, IN
BMI	AGL	CENTRAL IL RGNL ARPT AT BLOOMINGTON-NORMAL	BLOOMINGTON/NORMAL, IL
BQN	ASO	RAFAEL HERNANDEZ	AGUADILLA, PR
BRO	ASW	BROWNSVILLE/SOUTH PADRE ISLAND INTL	BROWNSVILLE, TX
BTL	AGL	W K KELLOGG	BATTLE CREEK, MI
BVY	ANE	BEVERLY MUNI	BEVERLY, MA
BZN	ANM	BOZEMAN YELLOWSTONE INTL	BOZEMAN, MT
CGF	AGL	CUYAHOGA COUNTY	CLEVELAND, OH
CHD	AWP	CHANDLER MUNI	CHANDLER, AZ
CHO	AEA	CHARLOTTESVILLE-ALBEMARLE	CHARLOTTESVILLE, VA
CIC	AWP	CHICO MUNI	CHICO, CA
CLL	ASW	EASTERWOOD FIELD	COLLEGE STATION, TX
CNW	ASW	TSTC WACO	WACO, TX
COU	ACE	COLUMBIA RGNL	COLUMBIA, MO
CRE	ASO	GRAND STRAND	NORTH MYRTLE BEACH, SC
CRG	ASO	JACKSONVILLE EXECUTIVE AT CRAIG	JACKSONVILLE, FL
CWA	AGL	CENTRAL WISCONSIN	MOSINEE, WI
CWF	ASW	CHENNAULT INTL	LAKE CHARLES, LA
CXO	ASW	LONE STAR EXECUTIVE	HOUSTON , TX
CXY	AEA	CAPITAL CITY	HARRISBURG, PA
CYS	ANM	CHEYENNE RGNL/JERRY OLSON FIELD	CHEYENNE, WY
DBQ	ACE	DUBUQUE RGNL	DUBUQUE, IA
DEC	AGL	DECATUR	DECATUR, IL
DET	AGL	COLEMAN A YOUNG MUNI	DETROIT, MI

Table B-5 List of FAA Contract Towers

Location Identifier	Region	Airport Name	City, State
DHN	ASO	DOTHAN RGNL	DOTHAN, AL
DTN	ASW	SHREVEPORT DOWNTOWN	SHREVEPORT, LA
DTO	ASW	DENTON ENTERPRISE	DENTON, TX
DXR	ANE	DANBURY MUNI	DANBURY, CT
EAU	AGL	CHIPPEWA VALLEY RGNL	EAU CLAIRE, WI
ECP	ASO	NORTHWEST FLORIDA BEACHES INTL	PANAMA CITY, FL
EGE	ANM	EAGLE COUNTY RGNL	EAGLE, CO
ENA	AAL	KENAI MUNI	KENAI, AK
ENW	AGL	KENOSHA RGNL	KENOSHA, WI
ESN	AEA	EASTON/NEWMAM FIELD	EASTON, MD
EVB	ASO	NEW SMYRNA BEACH MUNI	NEW SMYRNA BEACH, FL
EWB	ANE	NEW BEDFORD RGNL	NEW BEDFORD, MA
EWN	ASO	COASTAL CAROLINA REGIONAL	NEW BERN, NC
EYW	ASO	KEY WEST INTL	KEY WEST, FL
FDK	AEA	FREDERICK MUNI	FREDERICK, MD
FIN	ASO	FLAGLER COUNTY	PALM COAST, FL
FLG	AWP	FLAGSTAFF PULLIAM	FLAGSTAFF, AZ
FMN	ASW	FOUR CORNERS RGNL	FARMINGTON, NM
FMY	ASO	PAGE FIELD	FORT MYERS, FL
FOE	ACE	FORBES FIELD	TOPEKA, KS
FOK	AEA	FRANCIS S GABRESKI	WESTHAMPTON BEACH, NY
FTG	ANM	FRONT RANGE	DENVER, CO
FTY	ASO	FULTON COUNTY AIRPORT-BROWN FIELD	ATLANTA, GA
FUL	AWP	FULLERTON MUNI	FULLERTON, CA
FWS	ASW	FORT WORTH SPINKS	FORT WORTH, TX
FYV	ASW	DRAKE FIELD	FAYETTEVILLE, AR
GCK	ACE	GARDEN CITY RGNL	GARDEN CITY, KS
GEU	AWP	GLENDALE MUNI	GLENDALE, AZ
GJT	ANM	GRAND JUNCTION REGIONAL	GRAND JUNCTION, CO
GKY	ASW	ARLINGTON MUNI	ARLINGTON, TX
GLH	ASO	GREENVILLE MID-DELTA	GREENVILLE, MS
GLS	ASW	SCHOLES INTL AT GALVESTON	GALVESTON, TX
GMU	ASO	GREENVILLE DOWNTOWN	GREENVILLE, SC
GNV	ASO	GAINESVILLE RGNL	GAINESVILLE, FL
GON	ANE	GROTON-NEW LONDON	GROTON (NEW LONDON) , CT
GPI	ANM	GLACIER PARK INTL	KALISPELL , MT
GPM	ASW	GRAND PRAIRIE MUNI	GRAND PRAIRIE, TX
GRI	ACE	CENTRAL NEBRASKA RGNL	GRAND ISLAND, NE
GSN	AWP	FRANCISCO C ADA/SAIPAN INTL	SAIPAN ISLAND, MP
GTR	ASO	GOLDEN TRIANGLE RGNL	COLUMBUS/W POINT/STARKVILLE , MS
GTU	ASW	GEORGETOWN MUNI	GEORGETOWN, TX
GUM	AWP	GUAM INTL	GUAM, GU
GYH	ASO	DONALDSON FIELD	GREENVILLE, SC
GYR	AWP	PHOENIX GOODYEAR	GOODYEAR, AZ
GYV	AGL	GARY/CHICAGO INTL	GARY, IN
HFD	ANE	HARTFORD-BRAINARD	HARTFORD, CT
HGR	AEA	HAGERSTOWN RGNL-RICHARD A HENSON FLD	HAGERSTOWN, MD
HHR	AWP	JACK NORTHROP FIELD/HAWTHORNE MUNI	HAWTHORNE, CA
HKS	ASO	HAWKINS FIELD	JACKSON, MS
HKY	ASO	HICKORY RGNL	HICKORY, NC

Table B-5 List of FAA Contract Towers

Location Identifier	Region	Airport Name	City, State
HLG	AEA	WHEELING OHIO CO	WHEELING, WV
HND	AWP	HENDERSON EXECUTIVE	LAS VEGAS, NV
HOB	ASW	LEA COUNTY RGNL	HOBBS, NM
HQZ	ASW	MESQUITE METRO	MESQUITE, TX
HRL	ASW	VALLEY INTL	HARLINGEN, TX
HSA	ASO	STENNIS INTL	BAY ST LOUIS, MS
HUM	ASW	HOUMA-TERREBONNE	HOUMA, LA
HUT	ACE	HUTCHINSON RGNL	HUTCHINSON, KS
HVN	ANE	TWEED-NEW HAVEN	NEW HAVEN, CT
HWO	ASO	NORTH PERRY	HOLLYWOOD, FL
HXD	ASO	HILTON HEAD	HILTON HEAD ISLAND, SC
HYA	ANE	BARNSTABLE MUNI-BOARDMAN/POLANDO FIELD	HYANNIS, MA
HYI	ASW	SAN MARCOS REGIONAL	AUSTIN, TX
IAG	AEA	NIAGARA FALLS INTL	NIAGARA FALLS, NY
IDA	ANM	IDAHO FALLS RGNL	IDAHO FALLS, ID
IFP	AWP	LAUGHLIN/BULLHEAD INTL	BULLHEAD CITY, AZ
INT	ASO	SMITH REYNOLDS	WINSTON SALEM, NC
IPT	AEA	WILLIAMSPORT RGNL	WILLIAMSPORT, PA
ISM	ASO	KISSIMMEE GATEWAY	ORLANDO, FL
ISO	ASO	KINSTON RGNL JETPORT AT STALLINGS FLD	KINSTON, NC
ITH	AEA	ITHACA TOMPKINS RGNL	ITHACA, NY
IWA	AWP	PHOENIX-MESA GATEWAY	PHOENIX, AZ
IXD	ACE	NEW CENTURY AIRCENTER	OLATHE, KS
JAC	ANM	JACKSON HOLE	JACKSON, WY
JEF	ACE	JEFFERSON CITY MEMORIAL	JEFFERSON CITY, MO
JLN	ACE	JOPLIN RGNL	JOPLIN, MO
JQF	ASO	CONCORD RGNL	CONCORD, NC
JRF	AWP	KALAELOA (JOHN RODGERS FIELD)	KAPOLEI, HI
JVL	AGL	SOUTHERN WISCONSIN RGNL	JANESVILLE, WI
JXN	AGL	JACKSON COUNTY-REYNOLDS FIELD	JACKSON, MI
KOA	AWP	KONA INTL AT KEAHOLE	KAILUA/KONA, HI
LAL	ASO	LAKELAND LINDER RGNL	LAKELAND, FL
LAW	ASW	LAWTON-FORT SILL RGNL	LAWTON, OK
LBE	AEA	ARNOLD PALMER RGNL	LATROBE, PA
LEB	ANE	LEBANON MUNI	LEBANON, NH
LEE	ASO	LEESBURG INTL	LEESBURG, FL
LIH	AWP	LIHUE	LIHUE, HI
LMT	ANM	KLAMATH FALLS	KLAMATH FALLS, OR
LNS	AEA	LANCASTER	LANCASTER, PA
LRD	ASW	LAREDO INTL	LAREDO, TX
LSE	AGL	LA CROSSE RGNL	LA CROSSE, WI
LUK	AGL	CINCINNATI MUNI AIRPORT LUNKEN FIELD	CINCINNATI, OH
LWB	AEA	GREENBRIER VALLEY	LEWISBURG, WV
LWM	ANE	LAWRENCE MUNI	LAWRENCE, MA
LWS	ANM	LEWISTON-NEZ PERCE COUNTY	LEWISTON, ID
LYH	AEA	LYNCHBURG RGNL/PRESTON GLENN FLD	LYNCHBURG, VA
LZU	ASO	GWINNETT COUNTY - BRISCOE FIELD	LAWRENCEVILLE, GA
MCN	ASO	MIDDLE GEORGIA RGNL	MACON, GA
MDH	AGL	SOUTHERN ILLINOIS	CARBONDALE/MURPHYSBORO, IL
MEI	ASO	KEY FIELD	MERIDIAN, MS

Table B-5 List of FAA Contract Towers

Location Identifier	Region	Airport Name	City, State
MER	AWP	CASTLE	ATWATER, CA
MFE	ASW	MC ALLEN MILLER INTL	MC ALLEN, TX
MFR	ANM	ROGUE VALLEY INTL - MEDFORD	MEDFORD, OR
MGW	AEA	MORGANTOWN MUNI-WALTER L BILL HART FLD	MORGANTOWN, WV
MHK	ACE	MANHATTAN RGNL	MANHATTAN, KS
MHR	AWP	SACRAMENTO MATHER	SACRAMENTO, CA
MIE	AGL	DELAWARE COUNTY RGNL	MUNCIE, IN
MKK	AWP	MOLOKAI	KAUNAKAKAI, HI
MKL	ASO	MC KELLAR-SIPES RGNL	JACKSON, TN
MLB	ASO	MELBOURNE INTL	MELBOURNE, FL
MOD	AWP	MODESTO CITY-CO-HARRY SHAM FLD	MODESTO, CA
MOT	AGL	MINOT INTL	MINOT, ND
MQY	ASO	SMYRNA	SMYRNA, TN
MSO	ANM	MISSOULA INTL	MISSOULA, MT
MTN	AEA	MARTIN STATE	BALTIMORE, MD
MVY	ANE	MARTHA'S VINEYARD	VINEYARD HAVEN, MA
MWA	AGL	WILLIAMSON COUNTY RGNL	MARION, IL
MWC	AGL	LAWRENCE J TIMMERMAN	MILWAUKEE, WI
NQA	ASO	MILLINGTON RGNL JETPORT	MILLINGTON, TN
OCF	ASO	OCALA INTL-JIM TAYLOR FIELD	OCALA, FL
OGD	ANM	OGDEN-HINCKLEY	OGDEN, UT
OJC	ACE	JOHNSON COUNTY EXECUTIVE	OLATHE, KS
OLM	ANM	OLYMPIA RGNL	OLYMPIA, WA
OLV	ASO	OLIVE BRANCH	OLIVE BRANCH, MS
OMN	ASO	ORMOND BEACH MUNI	ORMOND BEACH, FL
OPF	ASO	OPA-LOCKA EXECUTIVE	MIAMI, FL
ORH	ANE	WORCESTER RGNL	WORCESTER, MA
OSH	AGL	WITTMAN RGNL	OSHKOSH, WI
OSU	AGL	OHIO STATE UNIVERSITY	COLUMBUS, OH
OTH	ANM	SOUTHWEST OREGON RGNL	NORTH BEND, OR
OUN	ASW	UNIVERSITY OF OKLAHOMA WESTHEIMER	NORMAN, OK
OWB	ASO	OWENSBORO-DAVIESS COUNTY	OWENSBORO, KY
OWD	ANE	NORWOOD MEMORIAL	NORWOOD, MA
OXC	ANE	WATERBURY-OXFORD	OXFORD, CT
OXR	AWP	OXNARD	OXNARD, CA
PAH	ASO	BARKLEY RGNL	PADUCAH, KY
PDT	ANM	EASTERN OREGON RGNL AT PENDLETON	PENDLETON, OR
PGD	ASO	PUNTA GORDA	PUNTA GORDA, FL
PIH	ANM	POCATELLO RGNL	POCATELLO, ID
PKB	AEA	MID-OHIO VALLEY RGNL	PARKERSBURG, WV
PMD	AWP	PALMDALE USAF PLANT 42	PALMDALE, CA
PMP	ASO	POMPANO BEACH AIRPARK	POMPANO BEACH, FL
PVU	ANM	PROVO MUNI	PROVO, UT
PWA	ASW	WILEY POST	OKLAHOMA CITY, OK
RAL	AWP	RIVERSIDE MUNI	RIVERSIDE, CA
RAP	AGL	RAPID CITY RGNL	RAPID CITY, SD
RBD	ASW	DALLAS EXECUTIVE	DALLAS, TX
RDD	AWP	REDDING MUNI	REDDING, CA
RDM	ANM	ROBERTS FIELD	REDMOND, OR
RME	AEA	GRIFFISS INTL	ROME, NY

Table B-5 List of FAA Contract Towers

Location Identifier	Region	Airport Name	City, State
RNM	AWP	RAMONA	RAMONA, CA
RNT	ANM	RENTON MUNI	RENTON, WA
ROG	ASW	ROGERS EXECUTIVE - CARTER FIELD	ROGERS, AR
RYN	AWP	RYAN FIELD	TUCSON, AZ
RYY	ASO	COBB COUNTY INTL-MCCOLLUM FIELD	ATLANTA, GA
SAC	AWP	SACRAMENTO EXECUTIVE	SACRAMENTO, CA
SAF	ASW	SANTA FE MUNI	SANTA FE, NM
SAW	AGL	SAWYER INTL	MARQUETTE, MI
SBP	AWP	SAN LUIS COUNTY RGNL	SAN LUIS OBISPO, CA
SBY	AEA	SALISBURY-OCEAN CITY WICOMICO RGNL	SALISBURY, MD
SDM	AWP	BROWN FIELD MUNI	SAN DIEGO, CA
SFF	ANM	FELTS FIELD	SPOKANE, WA
SGJ	ASO	NORTHEAST FLORIDA RGNL	ST AUGUSTINE, FL
SGR	ASW	SUGAR LAND RGNL	HOUSTON, TX
SIG	ASO	FERNANDO LUIS RIBAS DOMINICCI	SAN JUAN, PR
SJT	ASW	SAN ANGELO RGNL/MATHIS FIELD	SAN ANGELO, TX
SLE	ANM	MCNARY FLD	SALEM, OR
SLN	ACE	SALINA RGNL	SALINA, KS
SMX	AWP	SANTA MARIA PUB/CAPT G ALLAN HANCOCK FLD	SANTA MARIA, CA
SNS	AWP	SALINAS MUNI	SALINAS, CA
SPG	ASO	ALBERT WHITTED	ST PETERSBURG, FL
SQL	AWP	SAN CARLOS	SAN CARLOS, CA
SSF	ASW	STINSON MUNI	SAN ANTONIO, TX
STC	AGL	ST CLOUD RGNL	ST CLOUD, MN
STJ	ACE	ROSECRANS MEMORIAL	ST JOSEPH, MO
STX	ASO	HENRY E ROHLSSEN	CHRISTIANSTED, VI
SUA	ASO	WITHAM FIELD	STUART, FL
SUN	ANM	FRIEDMAN MEMORIAL	HAILEY, ID
SWF	AEA	STEWART INTL	NEWBURGH, NY
SWO	ASW	STILLWATER RGNL	STILLWATER, OK
TCL	ASO	TUSCALOOSA RGNL	TUSCALOOSA, AL
TIW	ANM	TACOMA NARROWS	TACOMA, WA
TIX	ASO	SPACE COAST RGNL	TITUSVILLE, FL
TKI	ASW	MCKINNEY NATIONAL	DALLAS, TX
TOP	ACE	PHILIP BILLARD MUNI	TOPEKA, KS
TTD	ANM	PORTLAND-TROUTDALE	PORTLAND, OR
TTN	AEA	TRENTON MERCER	TRENTON, NJ
TUP	ASO	TUPELO RGNL	TUPELO, MS
TXK	ASW	TEXARKANA RGNL-WEBB FIELD	TEXARKANA, AR
TYR	ASW	TYLER POUNDS RGNL	TYLER, TX
TZR	AGL	BOLTON FIELD	COLUMBUS, OH
UAO	ANM	AURORA STATE	AURORA, OR
UES	AGL	WAUKESHA COUNTY	WAUKESHA, WI
UGN	AGL	WAUKEGAN RGNL	CHICAGO/WAUKEGAN, IL
UNV	AEA	UNIVERSITY PARK	STATE COLLEGE, PA
VCT	ASW	VICTORIA RGNL	VICTORIA, TX
VCV	AWP	SOUTHERN CALIFORNIA LOGISTICS	VICTORVILLE, CA
VQQ	ASO	CECIL	JACKSONVILLE, FL
WDG	ASW	ENID WOODRING RGNL	ENID, OK
WHP	AWP	WHITEMAN	LOS ANGELES, CA

Table B-5 List of FAA Contract Towers

Location Identifier	Region	Airport Name	City, State
WJF	AWP	GENERAL WM J FOX AIRFIELD	LANCASTER, CA
XNA	ASW	NORTHWEST ARKANSAS RGNL	FAYETTEVILLE/SPRINGDALE/, AR
YKM	ANM	YAKIMA AIR TERMINAL/MCALLISTER FIELD	YAKIMA, WA

Listed 253 Airports.